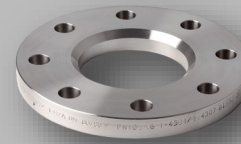




# FLENZEN

## OVERSCHUIFFLENZEN TYPE 02A



EN 1092-1  
Drukklasses  
PN 10/16/25/40

Wst. 1.4301  
Wst. 1.4307 **304L**  
Wst. 1.4401  
Wst. 1.4404 **316L**

**P250GH**

**Aluminium**

### PN 10/16/25 & 40

DN	OD	PN	304L	316L	P250GH	KG/PCS
SIZE	OUTSIDE DIAMETER	PRESSURE	ARTIKELNUMMER	ARTIKELNUMMER	ARTIKELNUMMER	
15	21.30	10/16/25/40	05PN40A4021	05PN40A6021	05PN40A25021	0.80
20	26.90	10/16/25/40	05PN40A4026	05PN40A6026	05PN40A25026	1.00
25	33.70	10/16/25/40	05PN40A4033	05PN40A6033	05PN40A25033	1.50
32	42.40	10/16/25/40	05PN40A4042	05PN40A6042	05PN40A25042	2.00
40	48.30	10/16/25/40	05PN40A4048	05PN40A6048	05PN40A25048	2.40

### PN 10/16

50	60.30	10/16	05PN16A4060	05PN16A6060	05PN16A25060	3.00
65 - 4	76.10	10/16	05PN16A4076-4	05PN16A6076-4	05PN16A25076-4	3.50
65 - 8	76.10	10/16	05PN16A4076-8	05PN16A6076-8	05PN16A25076-8	3.50
80 - 4	88.90	10/16	05PN16A4088-4	05PN16A6088-4	05PN16A25088-4	4.50
80 - 8	88.90	10/16	05PN16A4088-8	05PN16A6088-8	05PN16A25088-8	4.50
100	114.30	10/16	05PN16A4114	05PN16A6114	05PN16A25114	5.75
125	139.40	10/16	05PN16A4139	05PN16A6139	05PN16A25139	8.00
150	168.30	10/16	05PN16A4168	05PN16A6168	05PN16A25168	10.50

### PN 25/40

50	60.30	25/40	05PN40A4060	05PN40A6060	05PN40A25060	3.25
65 - 4	76.10	25/40	05PN40A4076-4	05PN40A6076-4	05PN40A25076-4	4.25
65 - 8	76.10	25/40	05PN40A4076-8	05PN40A6076-8	05PN40A25076-8	4.25
80 - 4	88.90	25/40	05PN40A4088-4	05PN40A6088-4	05PN40A25088-4	5.50
80 - 8	88.90	25/40	05PN40A4088-8	05PN40A6088-8	05PN40A25088-8	5.50
100	114.30	25/40	05PN40A4114	05PN40A6114	05PN40A25114	7.50
125	139.40	25/40	05PN40A4139	05PN40A6139	05PN40A25139	10.50
150	168.30	25/40	05PN40A4168	05PN40A6168	05PN40A25168	14.50

### PN 10

15	21.30	10
20	26.90	10
25	33.70	10
32	42.40	10
40	48.30	10
50	60.30	10
65	76.10	10
80	88.90	10
100	114.30	10
125	139.40	10
150	168.30	10
200	219.10	10
250	273.00	10
300	323.90	10
350	355.60	10
400	406.40	10
450	457.00	10
500	508.00	10
600	609.60	10



### Aluminium Type C KG/PCS

ARTIKELNUMMER	KG/PCS
02PN10A27021	0.19
02PN10A27026	0.30
02PN10A27033	0.33
02PN10A27042	0.53
02PN10A27048	0.60
02PN10A27060	0.71
02PN10A27076	0.83
02PN10A27088	1.20
02PN10A27114	1.27
02PN10A27139	1.43
02PN10A27168	1.66
02PN10A27219	9.50 / 2.96
02PN10A27273	12.00 / 3.22
02PN10A27323	13.50 / 3.75
02PN10A27355	20.50 / 6.05
02PN10A27406	27.50 / 7.50
02PN10A27457	33.00 / 7.95
02PN10A27508	38.50 / 12.49
02PN10A27609	51.00 / 19.00

### PN 16

Aluminium flenzen ook mogelijk in Type A met EPOX coating RAL 7001.

200	219.10	16	05PN16A4219	05PN16A6219	05PN16A25219	9.50
250	273.00	16	05PN16A4273	05PN16A6273	05PN16A25273	14.00
300	323.90	16	05PN16A4323	05PN16A6323	05PN16A25323	19.00
350	355.60	16	05PN16A4355	05PN16A6355	05PN16A25355	28.00
400	406.40	16	05PN16A4406	05PN16A6406	05PN16A25406	36.00
450	457.00	16	05PN16A4457	05PN16A6457	05PN16A25457	45.50
500	508.00	16	05PN16A4508	05PN16A6508	05PN16A25508	72.00
600	609.60	16	05PN16A4609	05PN16A6609	05PN16A25609	91.50

### PN 25

200	219.10	25	05PN25A4219	05PN25A6219	05PN25A25219	14.00
250	273.00	25	05PN25A4273	05PN25A6273	05PN25A25273	20.00
300	323.90	25	05PN25A4323	05PN25A6323	05PN25A25323	25.50
350	355.60	25	05PN25A4355	05PN25A6355	05PN25A25355	40.50
400	406.40	25	05PN25A4406	05PN25A6406	05PN25A25406	56.10
450	457.00	25	05PN25A4457	05PN25A6457	05PN25A25457	67.80
500	508.00	25	05PN25A4508	05PN25A6508	05PN25A25508	84.50
600	609.60	25	05PN25A4609	05PN25A6609	05PN25A25609	125.00

### PN 40

200	219.10	40	05PN40A4219	05PN40A6219	05PN40A25219	17.40
250	273.00	40	05PN40A4273	05PN40A6273	05PN40A25273	28.40
300	323.90	40	05PN40A4323	05PN40A6323	05PN40A25323	43.60
350	355.60	40	05PN40A4355	05PN40A6355	05PN40A25355	64.90
400	406.40	40	05PN40A4406	05PN40A6406	05PN40A25406	95.10



ASTM A182  
 ASTM A105/SA105N/C21  
 ASTM A350/SA350/LF2  
 ASME B16.5  
 150 LBS / 300 LBS

**304L** Wst. 1.4301  
 Wst. 1.4307

**316L** Wst. 1.4401  
 Wst. 1.4404

**A105/N**

**LF2**

Maat	D	304L 150LBS	316L 150LBS	KG	304L 300LBS	316L 300LBS	KG
Inch		Artikelnummer	Artikelnummer	PCS	Artikelnummer	Artikelnummer	PCS
1/2"	21.3	LJF150A4021	LJF150A6021	0.50	LJF300A4021	LJF300A6021	0.60
3/4"	26.7	LJF150A4026	LJF150A6026	0.65	LJF300A4026	LJF300A6026	1.15
1"	33.4	LJF150A4033	LJF150A6033	0.95	LJF300A4033	LJF300A6033	1.40
1.1/4"	42.4	LJF150A4042	LJF150A6042	1.20	LJF300A4042	LJF300A6042	1.65
1.1/2"	48.3	LJF150A4048	LJF150A6048	1.50	LJF300A4048	LJF300A6048	2.50
2"	60.3	LJF150A4060	LJF150A6060	2.40	LJF300A4060	LJF300A6060	2.80
2.1/2"	73.0	LJF150A4073	LJF150A6073	3.60	LJF300A4073	LJF300A6073	4.20
3"	88.9	LJF150A4088	LJF150A6088	4.05	LJF300A4088	LJF300A6088	7.75
4"	114.3	LJF150A4114	LJF150A6114	6.00	LJF300A4114	LJF300A6114	10.10
5"	141.3	LJF150A4141	LJF150A6141	6.45	LJF300A4141	LJF300A6141	12.55
6"	168.3	LJF150A4168	LJF150A6168	7.60	LJF300A4168	LJF300A6168	15.95
8"	219.1	LJF150A4219	LJF150A6219	12.70	LJF300A4219	LJF300A6219	24.40
10"	273.0	LJF150A4273	LJF150A6273	16.80	LJF300A4273	LJF300A6273	39.90
12"	323.9	LJF150A4323	LJF150A6323	28.30	LJF300A4323	LJF300A6323	58.75

Maat	D	A105/N 150LBS	LF2 150LBS	KG	A105/N 300lbs	LF2 300lbs	KG
Inch		Artikelnummer	Artikelnummer	PCS	Artikelnummer	Artikelnummer	PCS
1/2"	21.3	LJF150A21021	LJF150A24021	0.50	LJF300A21021	LJF300A24021	0.60
3/4"	26.7	LJF150A21026	LJF150A24026	0.65	LJF300A21026	LJF300A24026	1.15
1"	33.4	LJF150A21033	LJF150A24033	0.95	LJF300A21033	LJF300A24033	1.40
1.1/4"	42.4	LJF150A21042	LJF150A24042	1.20	LJF300A21042	LJF300A24042	1.65
1.1/2"	48.3	LJF150A21048	LJF150A24048	1.50	LJF300A21048	LJF300A24048	2.50
2"	60.3	LJF150A21060	LJF150A24060	2.40	LJF300A21060	LJF300A24060	2.80
2.1/2"	73.0	LJF150A21073	LJF150A24073	3.60	LJF300A21073	LJF300A24073	4.20
3"	88.9	LJF150A21088	LJF150A24088	4.05	LJF300A21088	LJF300A24088	7.75
4"	114.3	LJF150A21114	LJF150A24114	6.00	LJF300A21114	LJF300A24114	10.10
5"	141.3	LJF150A21141	LJF150A24141	6.45	LJF300A21141	LJF300A24141	12.55
6"	168.3	LJF150A21168	LJF150A24168	7.60	LJF300A21168	LJF300A24168	15.95
8"	219.1	LJF150A21219	LJF150A24219	12.70	LJF300A21219	LJF300A24219	24.40
10"	273.0	LJF150A21273	LJF150A24273	16.80	LJF300A21273	LJF300A24273	39.90
12"	323.9	LJF150A21323	LJF150A24323	28.30	LJF300A21323	LJF300A24323	58.75