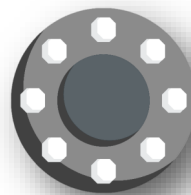


2. Flenzen



Voorlasflenzen
Blindflenzen
Vlakke lasflenzen

Overschuifflenzen
Draadflenzen
Socket weld flenzen

RVS	Staal	Aluminium*
♦ 304 / 304L -	♦ A105/N	♦ Blank, Type C
♦ 316 / 316L - 1.4401 / 1.4404	♦ LF2 ♦ P250GH (+Verzinkt) ♦ P280GH	♦ Epox, Type A RAL 7001

*Alleen leverbaar in Type 02A overschuifflens PN10.

Andere kwaliteit, maat en/of wanddikte nodig?
Vraag gerust naar de mogelijkheden.

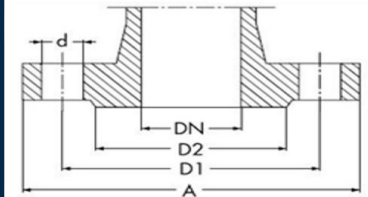


DIN 2501

Afmetingen op basis van een voorlasflens Type 11B

Afmetingen in mm

DN dia nominal (size)
 A flange outside dia
 D2 dia raised face
 D1 dia bolt circle
 n number of bolts
 d dia bolt holes



DN		PN 10	PN 16	PN 25	PN 40
10 / 17.2	A	90	90	90	90
	D1	60	60	60	60
	D2	40	40	40	40
	n x d	4 x 14 (M12)	4 x 14 (M12)	4 x 14 (M12)	4 x 14 (M12)
15 / 21.3	A	95	95	95	95
	D1	65	65	65	65
	D2	45	45	45	45
	n x d	4 x 14 (M12)	4 x 14 (M12)	4 x 14 (M12)	4 x 14 (M12)
20 / 26.9	A	105	105	105	105
	D1	75	75	75	75
	D2	58	58	58	58
	n x d	4 x 14 (M12)	4 x 14 (M12)	4 x 14 (M12)	4 x 14 (M12)
25 / 33.7	A	115	115	115	115
	D1	85	85	85	85
	D2	68	68	68	68
	n x d	4 x 14 (M12)	4 x 14 (M12)	4 x 14 (M12)	4 x 14 (M12)
32 / 42.4	A	140	140	140	140
	D1	100	100	100	100
	D2	78	78	78	78
	n x d	4 x 18 (M16)	4 x 18 (M16)	4 x 18 (M16)	4 x 18 (M16)
40 / 48.3	A	150	150	150	150
	D1	110	110	110	110
	D2	88	88	88	88
	n x d	4 x 18 (M16)	4 x 18 (M16)	4 x 18 (M16)	4 x 18 (M16)
50 / 60.3	A	165	165	165	165
	D1	125	125	125	125
	D2	102	102	102	102
	n x d	4 x 18 (M16)	4 x 18 (M16)	4 x 18 (M16)	4 x 18 (M16)
65 / 76.1	A	185	185	185	185
	D1	145	145	145	145
	D2	122	122	122	122
	n x d	4 x 18 (M16)	4 x 18 (M16)	8 x 18 (M16)	8 x 18 (M16)
80 / 88.9	A	200	200	200	200
	D1	160	160	160	160
	D2	138	138	138	138
	n x d	8 x 18 (M16)	8 x 18 (M16)	8 x 18 (M16)	8 x 18 (M16)
100 / 114.3	A	220	220	235	235
	D1	180	180	190	190
	D2	158	158	162	162
	n x d	8 x 18 (M16)	8 x 18 (M16)	8 x 22 (M20)	8 x 22 (M20)

DN		PN 10	PN 16	PN 25	PN 40
125 / 139.7	A	250	250	270	270
	D1	210	210	220	220
	D2	188	188	188	188
	n x d	8 x 18 (M16)	8 x 18 (M16)	8 x 26 (M24)	8 x 26 (M24)
150 / 168.3	A	285	285	300	300
	D1	240	240	250	250
	D2	212	212	218	218
	n x d	8 x 22 (M20)	8 x 22 (M20)	8 x 26 (M24)	8 x 26 (M24)
200 / 219.1	A	340	340	360	375
	D1	295	295	310	320
	D2	268	268	278	285
	n x d	8 x 22 (M20)	12 x 22 (M20)	12 x 26 (M24)	12 x 30 (M27)
250 / 273.0	A	395	405	425	450
	D1	350	355	370	385
	D2	320	320	335	345
	n x d	12 x 22 (M20)	12 x 26 (M24)	12 x 30 (M27)	12 x 33 (M30)
300 / 323.9	A	445	460	485	515
	D1	400	410	430	450
	D2	370	378	395	410
	n x d	12 x 22 (M20)	12 x 26 (M24)	16 x 30 (M27)	16 x 33 (M30)
350 / 355.6	A	505	520	555	580
	D1	460	470	490	510
	D2	430	438	450	465
	n x d	16 x 22 (M20)	16 x 26 (M24)	16 x 33 (M30)	16 x 36 (M33)
400 / 406.4	A	565	580	620	660
	D1	515	525	550	585
	D2	482	490	505	535
	n x d	16 x 26 (M24)	16 x 30 (M27)	16 x 36 (M33)	16 x 39 (M36)
450 / 457.0	A	615	640		685
	D1	565	585		610
	D2	532	550		560
	n x d	20 x 26 (M24)	20 x 30 (M27)		20 x 39 (M36)
500 / 508.0	A	670	715	730	755
	D1	620	650	660	670
	D2	585	610	615	615
	n x d	20 x 26 (M24)	20 x 33 (M30)	20 x 36 (M33)	20 x 42 (M39)
600 / 609.60	A	780	840	845	890
	D1	725	770	770	795
	D2	685	725	720	735
	n x d	20 x 30 (M27)	20 x 36 (M33)	20 x 39 (M36)	20 x 48 (M45)

Wij kunnen ook andere drukklassen leveren dan hieronder vermeld. Denk hierbij aan PN6, PN63 of PN100.

Deze liggen echter niet standaard op voorraad en worden met levertijd aangeboden.

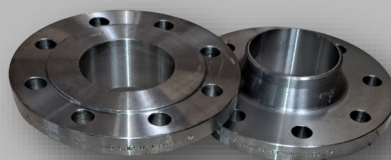
FLENZEN



VOORLASFLENZEN TYPE 11B

EN 1092-1

Drukclassen PN 10/16/25/40



**-4 OF -8 staat voor het aantal boutgaten

304L Wst. 1.4301

316L Wst. 1.4401
Wst. 1.4404

P250GH

PN 10/16/25 & 40

DN	OD	WT	PN	304L	316L	P250GH	KG/PCS
SIZE	OUTSIDE DIAMETER	WALL THICKNESS	PRESSURE	ARTIKELNUMMER	ARTIKELNUMMER	ARTIKELNUMMER	
15	21.30	2.0	10/16/25/40	11PN40B4021	11PN40B6021	11PN40B25021	0.90
20	26.90	2.3	10/16/25/40	11PN40B4026	11PN40B6026	11PN40B25026	1.10
25	33.70	2.6	10/16/25/40	11PN40B4033	11PN40B6033	11PN40B25033	1.30
32	42.40	2.6	10/16/25/40	11PN40B4042	11PN40B6042	11PN40B25042	2.00
40	48.30	2.6	10/16/25/40	11PN40B4048	11PN40B6048	11PN40B25048	2.25

PN 10/16

50	60.30	2.9	10/16	11PN16B4060	11PN16B6060	11PN16B25060	2.50
65 - 4	76.10	2.9	10/16	11PN16B4076-4	11PN16B6076-4	11PN16B25076-4	3.00
65 - 8	76.10	2.9	10/16	11PN16B4076-8	11PN16B6076-8	11PN16B25076-8	3.00
80 - 4	88.90	3.2	10/16	11PN16B4088-4	11PN16B6088-4	11PN16B25088-4	4.00
80 - 8	88.90	3.2	10/16	11PN16B4088-8	11PN16B6088-8	11PN16B25088-8	4.00
100	114.30	3.6	10/16	11PN16B4114	11PN16B6114	11PN16B25114	4.50
125	139.40	4.0	10/16	11PN16B4139	11PN16B6139	11PN16B25139	6.50
150	168.30	4.5	10/16	11PN16B4168	11PN16B6168	11PN16B25168	8.00

PN 25/40

50	60.30	2.9	25/40	11PN40B6060	11PN40B6060	11PN40B25060	3.00
65 - 4	76.10	2.9	25/40	11PN40B4076-4	11PN40B6076-4	11PN40B25076-4	3.68
65 - 8	76.10	2.9	25/40	11PN40B4076-8	11PN40B6076-8	11PN40B25076-8	3.68
80 - 4	88.90	3.2	25/40	11PN40B4088-4	11PN40B6088-4	11PN40B25088-4	4.75
80 - 8	88.90	3.2	25/40	11PN40B4088-8	11PN40B6088-8	11PN40B25088-8	4.75
100	114.30	3.6	25/40	11PN40B4114	11PN40B6114	11PN40B25114	6.46
125	139.40	4.0	25/40	11PN40B4139	11PN40B6139	11PN40B25139	8.86
150	168.30	4.5	25/40	11PN40B4168	11PN40B6168	11PN40B25168	11.70

PN 10

200	219.10	6.3	10	11PN10B4219	11PN10B6219	11PN10B25219	11.50
250	273.00	6.3	10	11PN10B4273	11PN10B6273	11PN10B25273	15.75
300	323.90	7.1	10	11PN10B4323	11PN10B6323	11PN10B25323	18.50
350	355.60	8.0	10	11PN10B4355	11PN10B6355	11PN10B25355	25.50
400	406.40	8.8	10	11PN10B4406	11PN10B6406	11PN10B25406	30.50
450	457.00	10.0	10	11PN10B4457	11PN10B6457	11PN10B25457	35.00
500	508.00	11.0	10	11PN10B4508	11PN10B6508	11PN10B25508	40.50
600	609.60	12.5	10	11PN10B4609	11PN10B6609	11PN10B25609	53.00

PN 16

200	219.10	6.3	16	11PN16B4219	11PN16B6219	11PN16B25219	11.80
250	273.00	6.3	16	11PN16B4273	11PN16B6273	11PN16B25273	16.50
300	323.90	7.1	16	11PN16B4323	11PN16B6323	11PN16B25323	22.00
350	355.60	8.0	16	11PN16B4355	11PN16B6355	11PN16B25355	32.75
400	406.40	8.8	16	11PN16B4406	11PN16B6406	11PN16B25406	41.00
450	457.00	10.0	16	11PN16B4457	11PN16B6457	11PN16B25457	50.50
500	508.00	11.0	16	11PN16B4508	11PN16B6508	11PN16B25508	75.00
600	609.60	12.5	16	11PN16B4609	11PN16B6609	11PN16B25609	96.50

PN 25

200	219.10	6.3	25	11PN25B4219	11PN25B6219	11PN25B25219	17.00
250	273.00	6.3	25	11PN25B4273	11PN25B6273	11PN25B25273	24.00
300	323.90	7.1	25	11PN25B4323	11PN25B6323	11PN25B25323	31.50
350	355.60	8.0	25	11PN25B4355	11PN25B6355	11PN25B25355	48.75
400	406.40	8.8	25	11PN25B4406	11PN25B6406	11PN25B25406	63.00
450	457.00	10.0	25	11PN25B4457	11PN25B6457	11PN25B25457	76.00
500	508.00	11.0	25	11PN25B4508	11PN25B6508	11PN25B25508	97.00
600	609.60	12.5	25	11PN25B4609	11PN25B6609	11PN25B25609	121.00

PN 40

200	219.10	6.3	40	11PN40B4219	11PN40B6219	11PN40B25219	21.00
250	273.00	6.3	40	11PN40B4273	11PN40B6273	11PN40B25273	34.00
300	323.90	7.1	40	11PN40B4323	11PN40B6323	11PN40B25323	47.50
350	355.60	8.0	40	11PN40B4355	11PN40B6355	11PN40B25355	69.25
400	406.40	8.8	40	11PN40B4406	11PN40B6406	11PN40B25406	98.00
450	457.00	10.0	40	11PN40B4457	11PN40B6457	11PN40B25457	105.00
500	508.00	11.0	40	11PN40B4508	11PN40B6508	11PN40B25508	130.00
600	609.60	12.5	40	11PN40B4609	11PN40B6609	11PN40B25609	209.00



EN 1092-1

Drukklasses PN 10/16/25/40

Wst. 1.4301
Wst. 1.4307**304L**Wst. 1.4401
Wst. 1.4404**316L****P250GH**

PN 10/16/25 & 40

DN	OD	PN	304L	316L	P250GH	KG/PCS
SIZE	OUTSIDE DIAMETER	PRESSURE	ARTIKELNUMMER	ARTIKELNUMMER	ARTIKELNUMMER	
15	21.30	10/16/25/40	05PN40A4021	05PN40A6021	05PN40A25021	0.80
20	26.90	10/16/25/40	05PN40A4026	05PN40A6026	05PN40A25026	1.00
25	33.70	10/16/25/40	05PN40A4033	05PN40A6033	05PN40A25033	1.50
32	42.40	10/16/25/40	05PN40A4042	05PN40A6042	05PN40A25042	2.00
40	48.30	10/16/25/40	05PN40A4048	05PN40A6048	05PN40A25048	2.40

PN 10/16

50	60.30	10/16	05PN16A4060	05PN16A6060	05PN16A25060	3.00
65 - 4	76.10	10/16	05PN16A4076-4	05PN16A6076-4	05PN16A25076-4	3.50
65 - 8	76.10	10/16	05PN16A4076-8	05PN16A6076-8	05PN16A25076-8	3.50
80 - 4	88.90	10/16	05PN16A4088-4	05PN16A6088-4	05PN16A25088-4	4.50
80 - 8	88.90	10/16	05PN16A4088-8	05PN16A6088-8	05PN16A25088-8	4.50
100	114.30	10/16	05PN16A4114	05PN16A6114	05PN16A25114	5.75
125	139.40	10/16	05PN16A4139	05PN16A6139	05PN16A25139	8.00
150	168.30	10/16	05PN16A4168	05PN16A6168	05PN16A25168	10.50

PN 25/40

50	60.30	25/40	05PN40A4060	05PN40A6060	05PN40A25060	3.25
65 - 4	76.10	25/40	05PN40A4076-4	05PN40A6076-4	05PN40A25076-4	4.25
65 - 8	76.10	25/40	05PN40A4076-8	05PN40A6076-8	05PN40A25076-8	4.25
80 - 4	88.90	25/40	05PN40A4088-4	05PN40A6088-4	05PN40A25088-4	5.50
80 - 8	88.90	25/40	05PN40A4088-8	05PN40A6088-8	05PN40A25088-8	5.50
100	114.30	25/40	05PN40A4114	05PN40A6114	05PN40A25114	7.50
125	139.40	25/40	05PN40A4139	05PN40A6139	05PN40A25139	10.50
150	168.30	25/40	05PN40A4168	05PN40A6168	05PN40A25168	14.50

PN 10

200	219.10	10	05PN10A4219	05PN10A6219	05PN10A25219	9.50
250	273.00	10	05PN10A4273	05PN10A6273	05PN10A25273	12.00
300	323.90	10	05PN10A4323	05PN10A6323	05PN10A25323	13.50
350	355.60	10	05PN10A4355	05PN10A6355	05PN10A25355	20.50
400	406.40	10	05PN10A4406	05PN10A6406	05PN10A25406	27.50
450	457.00	10	05PN10A4457	05PN10A6457	05PN10A25457	33.00
500	508.00	10	05PN10A4508	05PN10A6508	05PN10A25508	38.50
600	609.60	10	05PN10A4609	05PN10A6609	05PN10A25609	51.00

PN 16

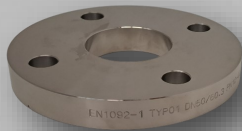
200	219.10	16	05PN16A4219	05PN16A6219	05PN16A25219	9.50
250	273.00	16	05PN16A4273	05PN16A6273	05PN16A25273	14.00
300	323.90	16	05PN16A4323	05PN16A6323	05PN16A25323	19.00
350	355.60	16	05PN16A4355	05PN16A6355	05PN16A25355	28.00
400	406.40	16	05PN16A4406	05PN16A6406	05PN16A25406	36.00
450	457.00	16	05PN16A4457	05PN16A6457	05PN16A25457	45.50
500	508.00	16	05PN16A4508	05PN16A6508	05PN16A25508	72.00
600	609.60	16	05PN16A4609	05PN16A6609	05PN16A25609	91.50

PN 25

200	219.10	25	05PN25A4219	05PN25A6219	05PN25A25219	14.00
250	273.00	25	05PN25A4273	05PN25A6273	05PN25A25273	20.00
300	323.90	25	05PN25A4323	05PN25A6323	05PN25A25323	46.00
350	355.60	25	05PN25A4355	05PN25A6355	05PN25A25355	68.10
400	406.40	25	05PN25A4406	05PN25A6406	05PN25A25406	89.70
450	457.00	25	05PN25A4457	05PN25A6457	05PN25A25457	130.00
500	508.00	25	05PN25A4508	05PN25A6508	05PN25A25508	159.00
600	609.60	25	05PN25A4609	05PN25A6609	05PN25A25609	278.00

PN 40

200	219.10	40	05PN40A4219	05PN40A6219	05PN40A25219	28.80
250	273.00	40	05PN40A4273	05PN40A6273	05PN40A25273	44.40
300	323.90	40	05PN40A4323	05PN40A6323	05PN40A25323	64.20
350	355.60	40	05PN40A4355	05PN40A6355	05PN40A25355	89.50
400	406.40	40	05PN40A4406	05PN40A6406	05PN40A25406	127.00
450	457.00	40	05PN40A4457	05PN40A6457	05PN40A25457	154.00
500	508.00	40	05PN40A4508	05PN40A6508	05PN40A25508	188.00
600	609.60	40	05PN40A4609	05PN40A6609	05PN40A25609	331.00



304L Wst. 1.4301
Wst. 1.4307

316L Wst. 1.4401
Wst. 1.4404

P250GH

PN 10/16/25 & 40

DN	OD	PN	304L	316L	P250GH	KG/PCS
SIZE	OUTSIDE DIAMETER	PRESSURE	ARTIKELNUMMER	ARTIKELNUMMER	ARTIKELNUMMER	
15	21.30	10/16/25/40	01PN40A4021	01PN40A6021	01PN40A25021	0.70
20	26.90	10/16/25/40	01PN40A4026	01PN40A6026	01PN40A25026	0.90
25	33.70	10/16/25/40	01PN40A4033	01PN40A6033	01PN40A25033	1.10
32	42.40	10/16/25/40	01PN40A4042	01PN40A6042	01PN40A25042	1.75
40	48.30	10/16/25/40	01PN40A4048	01PN40A6048	01PN40A25048	2.00

PN 10/16

50	60.30	10/16	01PN16A4060	01PN16A6060	01PN16A25060	2.50
65 - 4	76.10	10/16	01PN16A4076-4	01PN16A6076-4	01PN16A25076-4	3.50
65 - 8	76.10	10/16	01PN16A4076-8	01PN16A6076-8	01PN16A25076-8	3.50
80 - 4	88.90	10/16	01PN16A4088-4	01PN16A6088-4	01PN16A25088-4	4.00
80 - 8	88.90	10/16	01PN16A4088-8	01PN16A6088-8	01PN16A25088-8	4.00
100	114.30	10/16	01PN16A4114	01PN16A6114	01PN16A25114	4.50
125	139.40	10/16	01PN16A4139	01PN16A6139	01PN16A25139	5.50
150	168.30	10/16	01PN16A4168	01PN16A6168	01PN16A25168	7.00

PN 25/40

50	60.30	25/40	01PN40A4060	01PN40A6060	01PN40A25060	2.75
65 - 4	76.10	25/40	01PN40A4076-4	01PN40A6076-4	01PN40A25076-4	3.50
65 - 8	76.10	25/40	01PN40A4076-8	01PN40A6076-8	01PN40A25076-8	3.50
80 - 4	88.90	25/40	01PN40A4088-4	01PN40A6088-4	01PN40A25088-4	4.25
80 - 8	88.90	25/40	01PN40A4088-8	01PN40A6088-8	01PN40A25088-8	4.25
100	114.30	25/40	01PN40A4114	01PN40A6114	01PN40A25114	6.00
125	139.40	25/40	01PN40A4139	01PN40A6139	01PN40A25139	8.00
150	168.30	25/40	01PN40A4168	01PN40A6168	01PN40A25168	10.00

PN 10

200	219.10	10	01PN10A4219	01PN10A6219	01PN10A25219	9.50
250	273.00	10	01PN10A4273	01PN10A6273	01PN10A25273	12.00
300	323.90	10	01PN10A4323	01PN10A6323	01PN10A25323	13.50
350	355.60	10	01PN10A4355	01PN10A6355	01PN10A25355	20.50
400	406.40	10	01PN10A4406	01PN10A6406	01PN10A25406	27.50
450	457.00	10	05PN10A4457	05PN10A6457	05PN10A25457	33.00
500	508.00	10	05PN10A4508	05PN10A6508	05PN10A25508	38.50
600	609.60	10	05PN10A4609	05PN10A6609	05PN10A25609	53.00

PN 16

200	219.10	16	01PN10A4219	01PN16A6219	01PN10A25219	9.50
250	273.00	16	01PN10A4273	01PN16A6273	01PN10A25273	14.00
300	323.90	16	01PN10A4323	01PN16A6323	01PN10A25323	19.00
350	355.60	16	01PN10A4355	01PN16A6355	01PN10A25355	28.00
400	406.40	16	01PN10A4406	01PN16A6406	01PN10A25406	36.00
450	457.00	16	01PN16A4457	01PN16A6457	01PN16A25457	45.50
500	508.00	16	01PN16A4508	01PN16A6508	01PN16A25508	68.00
600	609.60	16	01PN16A4609	01PN16A6609	01PN16A25609	102.00

PN 25

200	219.10	25	01PN25A4219	01PN25A6219	01PN25A25219	14.00
250	273.00	25	01PN25A4273	01PN25A6273	01PN25A25273	20.00
300	323.90	25	01PN25A4323	01PN25A6323	01PN25A25323	27.00
350	355.60	25	01PN25A4355	01PN25A6355	01PN25A25355	42.00
400	406.40	25	01PN25A4406	01PN25A6406	01PN25A25406	58.00
450	457.00	25	01PN25A4457	01PN25A6457	01PN25A25457	69.00
500	508.00	25	01PN25A4508	01PN25A6508	01PN25A25508	87.00
600	609.60	25	01PN25A4609	01PN25A6609	01PN25A25609	127.00

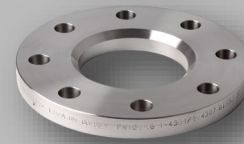
PN 40

200	219.10	40	01PN40A4219	01PN40A6219	01PN40A25219	18.00
250	273.00	40	01PN40A4273	01PN40A6273	01PN40A25273	29.00
300	323.90	40	01PN40A4323	01PN40A6323	01PN40A25323	45.00
350	355.60	40	01PN40A4355	01PN40A6355	01PN40A25355	67.00
400	406.40	40	01PN40A4406	01PN40A6406	01PN40A25406	97.00



FLENZEN

OVERSCHUIFFLENZEN TYPE 02A



EN 1092-1
Drukklasses
PN 10/16/25/40

Wst. 1.4301
Wst. 1.4307 **304L**
Wst. 1.4401
Wst. 1.4404 **316L**

P250GH

Aluminium

PN 10/16/25 & 40

DN	OD	PN	304L	316L	P250GH	KG/PCS
SIZE	OUTSIDE DIAMETER	PRESSURE	ARTIKELNUMMER	ARTIKELNUMMER	ARTIKELNUMMER	
15	21.30	10/16/25/40	05PN40A4021	05PN40A6021	05PN40A25021	0.80
20	26.90	10/16/25/40	05PN40A4026	05PN40A6026	05PN40A25026	1.00
25	33.70	10/16/25/40	05PN40A4033	05PN40A6033	05PN40A25033	1.50
32	42.40	10/16/25/40	05PN40A4042	05PN40A6042	05PN40A25042	2.00
40	48.30	10/16/25/40	05PN40A4048	05PN40A6048	05PN40A25048	2.40

PN 10/16

50	60.30	10/16	05PN16A4060	05PN16A6060	05PN16A25060	3.00
65 - 4	76.10	10/16	05PN16A4076-4	05PN16A6076-4	05PN16A25076-4	3.50
65 - 8	76.10	10/16	05PN16A4076-8	05PN16A6076-8	05PN16A25076-8	3.50
80 - 4	88.90	10/16	05PN16A4088-4	05PN16A6088-4	05PN16A25088-4	4.50
80 - 8	88.90	10/16	05PN16A4088-8	05PN16A6088-8	05PN16A25088-8	4.50
100	114.30	10/16	05PN16A4114	05PN16A6114	05PN16A25114	5.75
125	139.40	10/16	05PN16A4139	05PN16A6139	05PN16A25139	8.00
150	168.30	10/16	05PN16A4168	05PN16A6168	05PN16A25168	10.50

PN 25/40

50	60.30	25/40	05PN40A4060	05PN40A6060	05PN40A25060	3.25
65 - 4	76.10	25/40	05PN40A4076-4	05PN40A6076-4	05PN40A25076-4	4.25
65 - 8	76.10	25/40	05PN40A4076-8	05PN40A6076-8	05PN40A25076-8	4.25
80 - 4	88.90	25/40	05PN40A4088-4	05PN40A6088-4	05PN40A25088-4	5.50
80 - 8	88.90	25/40	05PN40A4088-8	05PN40A6088-8	05PN40A25088-8	5.50
100	114.30	25/40	05PN40A4114	05PN40A6114	05PN40A25114	7.50
125	139.40	25/40	05PN40A4139	05PN40A6139	05PN40A25139	10.50
150	168.30	25/40	05PN40A4168	05PN40A6168	05PN40A25168	14.50

PN 10

15	21.30	10
20	26.90	10
25	33.70	10
32	42.40	10
40	48.30	10
50	60.30	10
65	76.10	10
80	88.90	10
100	114.30	10
125	139.40	10
150	168.30	10
200	219.10	10
250	273.00	10
300	323.90	10
350	355.60	10
400	406.40	10
450	457.00	10
500	508.00	10
600	609.60	10



Aluminium Type C KG/PCS

ARTIKELNUMMER	KG/PCS
02PN10A27021	0.19
02PN10A27026	0.30
02PN10A27033	0.33
02PN10A27042	0.53
02PN10A27048	0.60
02PN10A27060	0.71
02PN10A27076	0.83
02PN10A27088	1.20
02PN10A27114	1.27
02PN10A27139	1.43
02PN10A27168	1.66
02PN10A27219	9.50 / 2.96
02PN10A27273	12.00 / 3.22
02PN10A27323	13.50 / 3.75
02PN10A27355	20.50 / 6.05
02PN10A27406	27.50 / 7.50
02PN10A27457	33.00 / 7.95
02PN10A27508	38.50 / 12.49
02PN10A27609	51.00 / 19.00

PN 16

Aluminium flenzen ook mogelijk in Type A met EPOX coating RAL 7001.

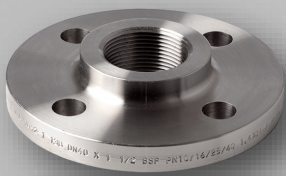
200	219.10	16	05PN16A4219	05PN16A6219	05PN16A25219	9.50
250	273.00	16	05PN16A4273	05PN16A6273	05PN16A25273	14.00
300	323.90	16	05PN16A4323	05PN16A6323	05PN16A25323	19.00
350	355.60	16	05PN16A4355	05PN16A6355	05PN16A25355	28.00
400	406.40	16	05PN16A4406	05PN16A6406	05PN16A25406	36.00
450	457.00	16	05PN16A4457	05PN16A6457	05PN16A25457	45.50
500	508.00	16	05PN16A4508	05PN16A6508	05PN16A25508	72.00
600	609.60	16	05PN16A4609	05PN16A6609	05PN16A25609	91.50

PN 25

200	219.10	25	05PN25A4219	05PN25A6219	05PN25A25219	14.00
250	273.00	25	05PN25A4273	05PN25A6273	05PN25A25273	20.00
300	323.90	25	05PN25A4323	05PN25A6323	05PN25A25323	25.50
350	355.60	25	05PN25A4355	05PN25A6355	05PN25A25355	40.50
400	406.40	25	05PN25A4406	05PN25A6406	05PN25A25406	56.10
450	457.00	25	05PN25A4457	05PN25A6457	05PN25A25457	67.80
500	508.00	25	05PN25A4508	05PN25A6508	05PN25A25508	84.50
600	609.60	25	05PN25A4609	05PN25A6609	05PN25A25609	125.00

PN 40

200	219.10	40	05PN40A4219	05PN40A6219	05PN40A25219	17.40
250	273.00	40	05PN40A4273	05PN40A6273	05PN40A25273	28.40
300	323.90	40	05PN40A4323	05PN40A6323	05PN40A25323	43.60
350	355.60	40	05PN40A4355	05PN40A6355	05PN40A25355	64.90
400	406.40	40	05PN40A4406	05PN40A6406	05PN40A25406	95.10



304L Wst. 1.4301
Wst. 1.4307

316L Wst. 1.4401
Wst. 1.4404

P250GH

P250GH (Verzinkt)

PN 10/16/25 & 40							
DN	OD	PN	304L	316L	P250GH	P250GH VERZINKT	KG/PCS
SIZE	OUTSIDE DIAMETER	PRESSURE	ARTIKELNUMMER	ARTIKELNUMMER	ARTIKELNUMMER	ARTIKELNUMMER	
15	21.30	10/16/25/40	13PN40B4021	13PN40B6021	13PN40B25021	13PN40B25021HDG	0.70
20	26.90	10/16/25/40	13PN40B4026	13PN40B6026	13PN40B25026	13PN40B25026HDG	1.00
25	33.70	10/16/25/40	13PN40B4033	13PN40B6033	13PN40B25033	13PN40B25033HDG	1.30
32	42.40	10/16/25/40	13PN40B4042	13PN40B6042	13PN40B25042	13PN40B25042HDG	1.75
40	48.30	10/16/25/40	13PN40B4048	13PN40B6048	13PN40B25048	13PN40B25048HDG	2.00

PN 10/16							
SIZE	OUTSIDE DIAMETER	PRESSURE	ARTIKELNUMMER	ARTIKELNUMMER	ARTIKELNUMMER	ARTIKELNUMMER	KG/PCS
50	60.30	10/16	13PN16B4060	13PN16B6060	13PN16B25060	13PN16B25060HDG	2.50
65 - 4	76.10	10/16	13PN16B4076-4	13PN16B6076-4	13PN16B25076-4	13PN16B25076-4HDG	3.00
65 - 8	76.10	10/16	13PN16B4076-8	13PN16B6076-8	13PN16B25076-8	13PN16B25076-8HDG	3.00
80	88.90	10/16	13PN16B4088	13PN16B6088	13PN16B25088	13PN16B25088HDG	3.75
100	114.30	10/16	13PN16B4114	13PN16B6114	13PN16B25114	13PN16B25114HDG	4.50

PN 25/40							
SIZE	OUTSIDE DIAMETER	PRESSURE	ARTIKELNUMMER	ARTIKELNUMMER	ARTIKELNUMMER	ARTIKELNUMMER	KG/PCS
50	60.30	25/40	13PN40B4060	13PN40B6060	13PN40B25060	13PN40B25060HDG	2.75
65 - 4	76.10	25/40	13PN40B4076-4	13PN40B6076-4	13PN40B25076-4	13PN40B25076-4HDG	3.75
65 - 8	76.10	25/40	13PN40B4076-8	13PN40B6076-8	13PN40B25076-8	13PN40B25076-8HDG	3.75
80	88.90	25/40	13PN40B4088	13PN40B6088	13PN40B25088	13PN40B25088HDG	4.50
100	114.30	25/40	13PN40B4114	13PN40B6114	13PN40B25114	13PN40B25114HDG	6.00

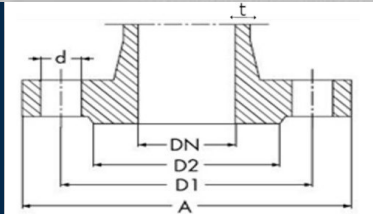


ANSI B16.5

Afmetingen op basis van een voorlasflens

Afmetingen in mm

DN dia nominal (size)
 A flange outside dia
 D2 dia raised face
 D1 dia bolt circle
 n number of bolts
 d dia bolt holes



Buis maat DN / NPS / OD		150 lbs	300 lbs	600 lbs	900 lbs	1500 lbs	Maat DN / NPS / OD		150 lbs	300 lbs	600 lbs	900 lbs	1500 lbs
15 / 1/2" / 21.34	A	88.9	95.2	95.2	121	121	150 / 6" / 168.3	A	279	317.5	355.6	381	394
	D1	60.3	66.7	66.7	82.6	82.6		D1	241	269.9	292.1	318	318
	D2	34.9	34.9	34.9	34.9	34.9		D2	215.9	215.9	215.9	215.9	215.9
	n x d	4 x 15.9	4 x 15.9	4 x 15.9	4 x 22.2	4 x 22.2		n x d	8 x 22.2	12 x 22.2	12 x 28.6	12 x 31.8	12 x 38.1
20 / 3/4" / 26.67	A	98.4	117.5	117.5	130	130	200 / 8" / 219.1	A	342.9	381	419	470	482.6
	D1	69.8	82.5	82.5	88.9	88.9		D1	298.4	330.2	349.2	394.2	394.2
	D2	42.9	42.9	42.9	42.9	42.9		D2	269.9	269.9	269.9	269.9	269.9
	n x d	4 x 15.9	4 x 19	4 x 19	4 x 22.2	4 x 22.2		n x d	8 x 22.2	12 x 25.4	12 x 31.8	12 x 38.1	12 x 44.5
25 / 1" / 33.40	A	108	123.8	123.8	149.2	149.2	250 / 10" / 273.0	A	406.4	444.5	508	546	584
	D1	79.4	88.9	88.9	102	102		D1	361.9	387.4	431.8	470	482.6
	D2	50.8	50.8	50.8	50.8	50.8		D2	323.8	323.8	323.8	323.8	323.8
	n x d	4 x 15.9	4 x 19	4 x 19	4 x 25.4	4 x 25.4		n x d	12 x 25.4	16 x 28.6	16 x 34.9	16 x 38.1	12 x 50.8
32 / 1.1/4" / 42.2	A	117.5	133.4	133.4	159	159	300 / 12" / 323.9	A	482.6	520.7	558.8	610	673
	D1	88.9	98.4	98.4	111	111		D1	431.8	450.9	488.9	533.4	571.5
	D2	63.5	63.5	63.5	63.5	63.5		D2	381	381	381	381	381
	n x d	4 x 15.9	4 x 19	4 x 19	4 x 25.4	4 x 25.4		n x d	12 x 25.4	16 x 31.8	20 x 34.9	20 x 38.1	16 x 54
40 / 1.1/2" / 48.3	A	127	155.4	155.4	177.8	177.8	350 / 14" / 355.6	A	533.4	584	603	641	749
	D1	98.5	114.3	114.3	123.9	123.9		D1	476.2	514.4	527	558.8	635
	D2	73.1	73.1	73.2	73.2	73.2		D2	412.7	412.7	412.7	412.7	412.7
	n x d	4 x 15.7	4 x 22.3	4 x 22.3	4 x 28.4	4 x 28.4		n x d	12 x 28.6	20 x 31.8	20 x 38.1	20 x 41.3	16 x 60.3
50 / 2" / 60.3	A	152.4	165.1	165.1	215.9	215.9	400 / 16" / 406.4	A	596.9	647.7	686	705	826
	D1	120.6	127	127	165.1	165.1		D1	539.8	571.5	603.3	616	705
	D2	91.9	91.9	91.9	91.9	91.9		D2	470	470	470	470	470
	n x d	4 x 19	8 x 19	8 x 19	8 x 25.4	8 x 25.4		n x d	16 x 28.6	20 x 34.9	20 x 41.3	20 x 44.5	16 x 66.7
65 / 2.1/2" / 73.0	A	177.8	190.5	190.5	244.3	244.3	450 / 18" / 457.2	A	635	711	743	787	914
	D1	139.7	149.3	149.4	190.5	190.5		D1	577.9	628.7	654.1	685.8	775
	D2	104.6	104.6	104.6	104.6	104.6		D2	533.4	533.4	533.4	533.4	533.4
	n x d	4 x 19	8 x 22.2	8 x 22.2	8 x 28.4	8 x 28.4		n x d	16 x 31.8	24 x 34.9	20 x 44.5	20 x 50.8	16 x 73
80 / 3" / 88.9	A	190.5	209.6	209.6	241.3	266.7	500 / 20" / 508.0	A	698.5	774.7	813	857	984
	D1	152.4	168.3	168.3	190.5	203		D1	635	685.8	724	749.3	832
	D2	127	127	127	127	127		D2	584.2	584.2	584.2	584.2	584.2
	n x d	4 x 19	8 x 22.2	8 x 22.2	8 x 25.4	8 x 31.8		n x d	20 x 31.8	24 x 34.9	24 x 44.5	20 x 54	16 x 79.4
100 / 4" / 114.3	A	228.6	254	273	292	311	600 / 24" / 609.6	A	914	914	940	1041	1168
	D1	190	200	215.9	235	241		D1	749.3	812.8	838.2	902	991
	D2	157.2	157.2	157.2	157.2	157.2		D2	692.2	692.2	692.2	692.2	692.2
	n x d	8 x 19	8 x 22.2	8 x 25.4	8 x 31.8	8 x 34.9		n x d	20 x 34.9	24 x 41.3	24 x 50.8	20 x 66.7	16 x 92.1
125 / 5" / 141.3	A	254	279.4	330.2	349	375							
	D1	215.9	234.9	266.7	279	292							
	D2	185.7	185.7	185.7	185.7	185.7							
	n x d	8 x 22.2	8 x 22.2	8 x 28.6	8 x 34.9	8 x 41.3							

900 LBS, 1500 LBS of een andere wanddikte kunt u ook opvragen.



FLENZEN



WELDING NECK

ASTM A182 ASME B16.5
150 LBS / 300 LBS / 600 LBS

304L Wst. 1.4301
Wst. 1.4307

316L Wst. 1.4401
Wst. 1.4404

D = DIAMETER

WT = WALL THICKNESS (WANDDIKTE)

Maat	D	WT	304L 150LBS	316L 150LBS	KG	304L 300LBS	316L 300LBS	KG	304L 600LBS	316L 600LBS	KG
Inch			Artikelnummer	Artikelnummer	PCS	Artikelnummer	Artikelnummer	PCS	Artikelnummer	Artikelnummer	PCS
1/2" 10S	21.3	2.11	WNF150B402110S	WNF150B602110S	0.50	WNF300B402110S	WNF300B602110S	0.78	WNF600B402110S	WNF600B602110S	1.06
1/2" STD	21.3	2.77	WNF150B4021STD	WNF150B6021STD	0.50	WNF300B4021STD	WNF300B6021STD	0.78	WNF600B4021STD	WNF600B6021STD	1.06
1/2" XS	21.3	3.73	WNF150B4021XS	WNF150B6021XS	0.50	WNF300B4021XS	WNF300B6021XS	0.78	WNF600B4021XS	WNF600B6021XS	1.06
3/4" 10S	26.7	2.11	WNF150B402610S	WNF150B602610S	0.72	WNF300B402610S	WNF300B602610S	1.32	WNF600B402610S	WNF600B602610S	1.92
3/4" STD	26.7	2.87	WNF150B4026STD	WNF150B6026STD	0.72	WNF300B4026STD	WNF300B6026STD	1.32	WNF600B4026STD	WNF600B6026STD	1.92
1" 10S	33.4	2.77	WNF150B403310S	WNF150B603310S	1.07	WNF300B403310S	WNF300B603310S	1.66	WNF600B403310S	WNF600B603310S	2.25
1" STD	33.4	3.38	WNF150B4033STD	WNF150B6033STD	1.07	WNF300B4033STD	WNF300B6033STD	1.66	WNF600B4033STD	WNF600B6033STD	2.25
1" XS	33.4	4.55	WNF150B4033XS	WNF150B6033XS	1.07	WNF300B4033XS	WNF300B6033XS	1.66	WNF600B4033XS	WNF600B6033XS	2.25
1.1/4" 10S	42.2	2.77	WNF150B404210S	WNF150B604210S	1.41	WNF300B404210S	WNF300B604210S	2.05	WNF600B404210S	WNF600B604210S	2.69
1.1/4" STD	42.2	3.38	WNF150B4042STD	WNF150B6042STD	1.41	WNF300B4042STD	WNF300B6042STD	2.05	WNF600B4042STD	WNF600B6042STD	2.69
1.1/2" 10S	48.3	2.77	WNF150B404810S	WNF150B604810S	1.80	WNF300B404810S	WNF300B604810S	3.06	WNF600B404810S	WNF600B604810S	4.32
1.1/2" STD	48.3	3.68	WNF150B4048STD	WNF150B6048STD	1.80	WNF300B4048STD	WNF300B6048STD	3.06	WNF600B4048STD	WNF600B6048STD	4.32
1.1/2" XS	48.3	5.08	WNF150B4048XS	WNF150B6048XS	1.80	WNF300B4048XS	WNF300B6048XS	3.06	WNF600B4048XS	WNF600B6048XS	4.32
2" 10S	60.3	2.77	WNF150B406010S	WNF150B606010S	2.58	WNF300B406010S	WNF300B606010S	3.42	WNF600B406010S	WNF600B606010S	4.26
2" STD	60.3	3.91	WNF150B4060STD	WNF150B6060STD	2.58	WNF300B4060STD	WNF300B6060STD	3.42	WNF600B4060STD	WNF600B6060STD	4.26
2" XS	60.3	5.54	WNF150B4060XS	WNF150B6060XS	2.58	WNF300B4060XS	WNF300B6060XS	3.42	WNF600B4060XS	WNF600B6060XS	4.26
2.1/2" 10S	73.0	3.05	WNF150B407310S	WNF150B607310S	4.30	WNF300B407310S	WNF300B607310S	5.34	WNF600B407310S	WNF600B607310S	6.38
2.1/2" STD	73.0	5.16	WNF150B4073STD	WNF150B6073STD	4.30	WNF300B4073STD	WNF300B6073STD	5.34	WNF600B4073STD	WNF600B6073STD	6.38
2.1/2" XS	73.0	7.01	WNF150B4073XS	WNF150B6073XS	4.30	WNF300B4073XS	WNF300B6073XS	5.34	WNF600B4073XS	WNF600B6073XS	6.38
3" 10S	88.9	3.05	WNF150B408810S	WNF150B608810S	5.20	WNF300B408810S	WNF300B608810S	7.30	WNF600B408810S	WNF600B608810S	9.40
3" STD	88.9	5.49	WNF150B4088STD	WNF150B6088STD	5.20	WNF300B4088STD	WNF300B6088STD	7.30	WNF600B4088STD	WNF600B6088STD	9.40
3" XS	88.9	7.62	WNF150B4088XS	WNF150B6088XS	5.20	WNF300B4088XS	WNF300B6088XS	7.30	WNF600B4088XS	WNF600B6088XS	9.40
4" 10S	114.3	3.05	WNF150B411410S	WNF150B611410S	7.35	WNF300B411410S	WNF300B611410S	11.28	WNF600B411410S	WNF600B611410S	15.21
4" STD	114.3	6.02	WNF150B4114STD	WNF150B6114STD	7.35	WNF300B4114STD	WNF300B6114STD	11.28	WNF600B4114STD	WNF600B6114STD	15.21
4" XS	114.3	8.56	WNF150B4114XS	WNF150B6114XS	7.35	WNF300B4114XS	WNF300B6114XS	11.28	WNF600B4114XS	WNF600B6114XS	15.21
5" 10S	141.3	3.40	WNF150B414110S	WNF150B614110S	8.92	WNF300B414110S	WNF300B614110S	15.15	WNF600B414110S	WNF600B614110S	21.38
5" STD	141.3	6.56	WNF150B4141STD	WNF150B6141STD	8.92	WNF300B4141STD	WNF300B6141STD	15.15	WNF600B4141STD	WNF600B6141STD	21.38
5" XS	141.3	9.52	WNF150B4141XS	WNF150B6141XS	8.92	WNF300B4141XS	WNF300B6141XS	15.15	WNF600B4141XS	WNF600B6141XS	21.38
6" 10S	168.3	3.40	WNF150B416810S	WNF150B616810S	11.25	WNF300B416810S	WNF300B616810S	19.70	WNF600B416810S	WNF600B616810S	28.15
6" STD	168.3	7.11	WNF150B4168STD	WNF150B6168STD	11.25	WNF300B4168STD	WNF300B6168STD	19.70	WNF600B4168STD	WNF600B6168STD	28.15
6" XS	168.3	10.97	WNF150B4168XS	WNF150B6168XS	11.25	WNF300B4168XS	WNF300B6168XS	19.70	WNF600B4168XS	WNF600B6168XS	28.15
8" 10S	219.1	3.76	WNF150B421910S	WNF150B621910S	17.70	WNF300B421910S	WNF300B621910S	30.50	WNF600B421910S	WNF600B621910S	43.30
8" STD	219.1	8.18	WNF150B4219STD	WNF150B6219STD	17.70	WNF300B4219STD	WNF300B6219STD	30.50	WNF600B4219STD	WNF600B6219STD	43.30
10" 10S	273.0	4.19	WNF150B427310S	WNF150B627310S	24.82	WNF300B427310S	WNF300B627310S	43.75	WNF600B427310S	WNF600B627310S	62.68
10" STD	273.0	9.27	WNF150B4273STD	WNF150B6273STD	24.82	WNF300B4273STD	WNF300B6273STD	43.75	WNF600B4273STD	WNF600B6273STD	62.68
12" 10S	323.9	4.57	WNF150B432310S	WNF150B632310S	39.00	WNF300B432310S	WNF300B632310S	65.00	WNF600B432310S	WNF600B632310S	91
12" STD	323.9	9.52	WNF150B4323STD	WNF150B6323STD	39.00	WNF300B4323STD	WNF300B6323STD	65.00	WNF600B4323STD	WNF600B6323STD	91
14" 10S	355.6	4.78	WNF150B435510S	WNF150B635510S	51.71	WNF300B435510S	WNF300B635510S	88.30	WNF600B435510S	WNF600B635510S	155,13
14" STD	355.6	9.53	WNF150B4355STD	WNF150B6355STD	51.71	WNF300B4355STD	WNF300B6355STD	88.30	WNF600B4355STD	WNF600B6355STD	155,13
16" 10S	406.4	4.78	WNF150B440610S	WNF150B640610S	64.41	WNF300B440610S	WNF300B640610S	112.94	WNF600B440610S	WNF600B640610S	193,23
16" STD	406.4	9.53	WNF150B4406STD	WNF150B6406STD	64.41	WNF300B4406STD	WNF300B6406STD	112.94	WNF600B4406STD	WNF600B6406STD	193,23
18" 10S	457.2	4.78	WNF150B445710S	WNF150B645710S	74.84	WNF300B445710S	WNF300B645710S	138.34	WNF600B445710S	WNF600B645710S	224,52
18" STD	457.2	9.53	WNF150B4457STD	WNF150B6457STD	74.84	WNF300B4457STD	WNF300B6457STD	138.34	WNF600B4457STD	WNF600B6457STD	224,52
20" 10S	508.0	5.54	WNF150B450810S	WNF150B650810S	89.36	WNF300B450810S	WNF300B650810S	167.37	WNF600B450810S	WNF600B650810S	268,08
20" STD	508.0	9.53	WNF150B4508STD	WNF150B6508STD	89.36	WNF300B4508STD	WNF300B6508STD	167.37	WNF600B4508STD	WNF600B6508STD	268,08
24" 10S	609.6	6.35	WNF150B460910S	WNF150B660910S	119.66	WNF300B460910S	WNF300B660910S	235.41	WNF600B460910S	WNF600B660910S	358,98
24" STD	609.6	9.53	WNF150B4609STD	WNF150B6609STD	119.66	WNF300B4609STD	WNF300B6609STD	235.41	WNF600B4609STD	WNF600B6609STD	358,98



FLENZEN

WELDING NECK

900 LBS, 1500 LBS of een andere wanddikte kunt u ook opvragen.

ASTM A105/SA105N/C21

ASTM A350/SA350/LF2

ASME B16.5

150 LBS / 300 LBS / 600 LBS



A105/N

LF2

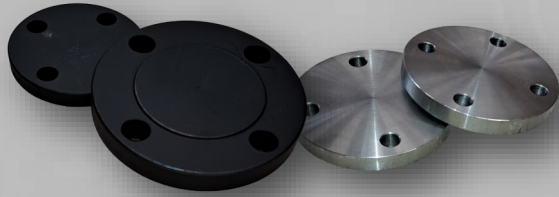
Maat	D	WT	A105/N 150LBS	LF2 150LBS	KG	A105/N 300LBS	LF2 300LBS	KG	A105/N 600LBS	LF2 600LBS	KG
Inch			Artikelnummer	Artikelnummer	PCS	Artikelnummer	Artikelnummer	PCS	Artikelnummer	Artikelnummer	PCS
1/2" STD	21.3	2.77	WNF150B21021STD	WNF150B24021STD	0.80	WNF300B21021STD	WNF300B24021STD	0.90	WNF600B21021STD	WNF600B24021STD	0.97
1/2" XS	21.3	3.73	WNF150B21021XS	WNF150B24021XS	0.85	WNF300B21021XS	WNF300B24021XS	1.00	WNF600B21021XS	WNF600B24021XS	1.40
3/4" STD	26.7	2.87	WNF150B21026STD	WNF150B24026STD	1.00	WNF300B21026STD	WNF300B24026STD	1.25	WNF600B21026STD	WNF600B24026STD	1.45
3/4" XS	26.7	3.91	WNF150B21026XS	WNF150B24026XS	1.10	WNF300B21026XS	WNF300B24026XS	1.40	WNF600B21026XS	WNF600B24026XS	1.80
1" STD	33.4	3.38	WNF150B21033STD	WNF150B24033STD	1.15	WNF300B21033STD	WNF300B24033STD	1.55	WNF600B21033STD	WNF600B24033STD	1.78
1" XS	33.4	4.55	WNF150B21033XS	WNF150B24033XS	1.20	WNF300B21033XS	WNF300B24033XS	1.80	WNF600B21033XS	WNF600B24033XS	2.30
1.1/4" STD	42.2	3.56	WNF150B21042STD	WNF150B24042STD	1.40	WNF300B21042STD	WNF300B24042STD	2.05	WNF600B21042STD	WNF600B24042STD	2.30
1.1/4" XS	42.2	4.85	WNF150B21042XS	WNF150B24042XS	1.50	WNF300B21042XS	WNF300B24042XS	2.70	WNF600B21042XS	WNF600B24042XS	3.20
1.1/2" STD	48.3	3.68	WNF150B21048STD	WNF150B24048STD	1.80	WNF300B21048STD	WNF300B24048STD	2.90	WNF600B21048STD	WNF600B24048STD	3.50
1.1/2" XS	48.3	5.08	WNF150B21048XS	WNF150B24048XS	1.90	WNF300B21048XS	WNF300B24048XS	3.60	WNF600B21048XS	WNF600B24048XS	4.50
2" STD	60.3	3.91	WNF150B21060STD	WNF150B24060STD	2.70	WNF300B21060STD	WNF300B24060STD	3.45	WNF600B21060STD	WNF600B24060STD	4.35
2" XS	60.3	5.54	WNF150B21060XS	WNF150B24060XS	2.90	WNF300B21060XS	WNF300B24060XS	4.10	WNF600B21060XS	WNF600B24060XS	5.40
2.1/2" STD	73.0	5.16	WNF150B21073STD	WNF150B24073STD	3.60	WNF300B21073STD	WNF300B24073STD	5.17	WNF600B21073STD	WNF600B24073STD	6.40
2.1/2" XS	73.0	7.01	WNF150B21073XS	WNF150B24073XS	3.75	WNF300B21073XS	WNF300B24073XS	5.57	WNF600B21073XS	WNF600B24073XS	8.20
3" STD	88.9	5.49	WNF150B21088STD	WNF150B24088STD	4.50	WNF300B21088STD	WNF300B24088STD	6.93	WNF600B21088STD	WNF600B24088STD	8.50
3" XS	88.9	7.62	WNF150B21088XS	WNF150B24088XS	4.75	WNF300B21088XS	WNF300B24088XS	6.80	WNF600B21088XS	WNF600B24088XS	10.40
4" STD	114.3	6.02	WNF150B21114STD	WNF150B24114STD	6.80	WNF300B21114STD	WNF300B24114STD	9.13	WNF600B21114STD	WNF600B24114STD	17.50
4" XS	114.3	8.56	WNF150B21114XS	WNF150B24114XS	6.95	WNF300B21114XS	WNF300B24114XS	11.30	WNF600B21114XS	WNF600B24114XS	19.10
5" STD	141.3	6.56	WNF150B21141STD	WNF150B24141STD	8.60	WNF300B21141STD	WNF300B24141STD	15.10	WNF600B21141STD	WNF600B24141STD	20.00
5" XS	141.3	9.52	WNF150B21141XS	WNF150B24141XS	8.80	WNF300B21141XS	WNF300B24141XS	16.25	WNF600B21141XS	WNF600B24141XS	24.33
6" STD	168.3	7.11	WNF150B21168STD	WNF150B24168STD	10.90	WNF300B21168STD	WNF300B24168STD	19.10	WNF600B21168STD	WNF600B24168STD	34.90
6" XS	168.3	10.97	WNF150B21168XS	WNF150B24168XS	11.20	WNF300B21168XS	WNF300B24168XS	20.15	WNF600B21168XS	WNF600B24168XS	37.00
8" 20	219.1	6.35	WNF150B2121920	WNF150B2421920	17.45	WNF300B2121920	WNF300B2421920	29.20			
8" STD	219.1	8.18	WNF150B21219STD	WNF150B24219STD	17.70	WNF300B21219STD	WNF300B24219STD	29.90	WNF600B21219STD	WNF600B24219STD	53.90
8" XS	219.1	12.70	WNF150B21219XS	WNF150B24219XS	18.05	WNF300B21219XS	WNF300B24219XS	32.00	WNF600B21219XS	WNF600B24219XS	53.00
10" 20	273.0	6.35	WNF150B2127320	WNF150B2427320	22.50	WNF300B2127320	WNF300B2427320	42.25			
10" STD	273.0	9.52	WNF150B21273STD	WNF150B24273STD	23.60	WNF300B21273STD	WNF300B24273STD	42.75	WNF600B21273STD	WNF600B24273STD	86.50
10" XS	273.0	12.70	WNF150B21273XS	WNF150B24273XS	25.00	WNF300B21273XS	WNF300B24273XS	62.52	WNF600B21273XS	WNF600B24273XS	86.00
12" 20	323.9	6.35	WNF150B2132320	WNF150B2432320	35.75	WNF300B2132320	WNF300B2432320	61.10			
12" STD	323.9	9.53	WNF150B21323STD	WNF150B24323STD	36.30	WNF300B21323STD	WNF300B24323STD	61.88	WNF600B21323STD	WNF600B24323STD	103.00
14" STD	355.6	9.53	WNF150B21355STD	WNF150B24355STD	46.30	WNF300B21355STD	WNF300B24355STD	85.81			
16" STD	406.4	9.53	WNF150B21406STD	WNF150B24406STD	57.70	WNF300B21406STD	WNF300B24406STD	106.00			
18" STD	457.2	9.53	WNF150B21457STD	WNF150B24457STD	63.60	WNF300B21457STD	WNF300B24457STD	131.00			
20" STD	508.0	9.53	WNF150B21508STD	WNF150B24508STD	77.20	WNF300B21508STD	WNF300B24508STD	158.00			
24" STD	609.6	9.53	WNF150B21609STD	WNF150B24609STD	118.00	WNF300B21609STD	WNF300B24609STD	230.00			

900 LBS, 1500 LBS of een andere maat/wanddikte kunt u ook opvragen.

FLENZEN



BLIND



ASTM A182
 ASTM A105/SA105N/C21
 ASTM A350/SA350/LF2
 ASME B16.5
 150 LBS / 300 LBS / 600 LBS

304L Wst. 1.4301

Wst. 1.4307

316L Wst. 1.4401

Wst. 1.4404

A105/N

LF2

Maat	D	304L 150LBS	316L 150LBS	KG	304L 300LBS	316L 300LBS	KG	304L 600LBS	316L 600LBS	KG
Inch		Artikelnummer	Artikelnummer	PCS	Artikelnummer	Artikelnummer	PCS	Artikelnummer	Artikelnummer	PCS
1/2"	21.3	BLF150B4021	BLF150B6021	0.45	BLF300B4021	BLF300B6021	0.60	BLF600B4021	BLF600B6021	1.00
3/4"	26.7	BLF150B4026	BLF150B6026	0.60	BLF300B4026	BLF300B6026	1.20	BLF600B4026	BLF600B6026	1.40
1"	33.4	BLF150B4033	BLF150B6033	0.95	BLF300B4033	BLF300B6033	1.45	BLF600B4033	BLF600B6033	1.80
1.1/4"	42.4	BLF150B4042	BLF150B6042	1.20	BLF300B4042	BLF300B6042	1.79	BLF600B4042	BLF600B6042	2.70
1.1/2"	48.3	BLF150B4048	BLF150B6048	1.60	BLF300B4048	BLF300B6048	2.70	BLF600B4048	BLF600B6048	3.60
2"	60.3	BLF150B4060	BLF150B6060	2.60	BLF300B4060	BLF300B6060	3.10	BLF600B4060	BLF600B6060	4.50
2.1/2"	73.0	BLF150B4073	BLF150B6073	4.10	BLF300B4073	BLF300B6073	4.75	BLF600B4073	BLF600B6073	6.80
3"	88.9	BLF150B4088	BLF150B6088	4.90	BLF300B4088	BLF300B6088	6.75	BLF600B4088	BLF600B6088	9.10
4"	114.3	BLF150B4114	BLF150B6114	7.50	BLF300B4114	BLF300B6114	12.00	BLF600B4114	BLF600B6114	18.60
5"	141.3	BLF150B4141	BLF150B6141	8.75	BLF300B4141	BLF300B6141	15.95	BLF600B4141	BLF600B6141	27.55
6"	168.3	BLF150B4168	BLF150B6168	11.35	BLF300B4168	BLF300B6168	21.25	BLF600B4168	BLF600B6168	39.00
8"	219.1	BLF150B4219	BLF150B6219	19.95	BLF300B4219	BLF300B6219	34.60	BLF600B4219	BLF600B6219	63.00
10"	273.0	BLF150B4273	BLF150B6273	29.40	BLF300B4273	BLF300B6273	55.50	BLF600B4273	BLF600B6273	105.00
12"	323.9	BLF150B4323	BLF150B6323	43.75	BLF300B4323	BLF300B6323	79.00	BLF600B4323	BLF600B6323	134.00

Maat	D	A105/N 150lbs	LF2 150lbs	KG	A105/N 300lbs	LF2 300lbs	KG	A105/N 600lbs	LF2 600lbs	KG
Inch		Artikelnummer	Artikelnummer	PCS	Artikelnummer	Artikelnummer	PCS	Artikelnummer	Artikelnummer	PCS
1/2"	21.3	BLF150B21021	BLF150B24021	0.45	BLF300B21021	BLF300B24021	0.60	BLF600B21021	BLF600B24021	1.00
3/4"	26.7	BLF150B21026	BLF150B24026	0.60	BLF300B21026	BLF300B24026	1.20	BLF600B21026	BLF600B24026	1.40
1"	33.4	BLF150B21033	BLF150B24033	0.95	BLF300B21033	BLF300B24033	1.45	BLF600B21033	BLF600B24033	1.80
1.1/4"	42.4	BLF150B21042	BLF150B24042	1.20	BLF300B21042	BLF300B24042	1.79	BLF600B21042	BLF600B24042	2.70
1.1/2"	48.3	BLF150B21048	BLF150B24048	1.60	BLF300B21048	BLF300B24048	2.70	BLF600B21048	BLF600B24048	3.60
2"	60.3	BLF150B21060	BLF150B24060	2.60	BLF300B21060	BLF300B24060	3.10	BLF600B21060	BLF600B24060	4.50
2.1/2"	73.0	BLF150B21073	BLF150B24073	4.10	BLF300B21073	BLF300B24073	4.75	BLF600B21073	BLF600B24073	6.80
3"	88.9	BLF150B21088	BLF150B24088	4.90	BLF300B21088	BLF300B24088	6.75	BLF600B21088	BLF600B24088	9.10
4"	114.3	BLF150B21114	BLF150B24114	7.50	BLF300B21114	BLF300B24114	12.00	BLF600B21114	BLF600B24114	18.60
5"	141.3	BLF150B21141	BLF150B24141	8.75	BLF300B21141	BLF300B24141	15.95	BLF600B21141	BLF600B24141	27.55
6"	168.3	BLF150B21168	BLF150B24168	11.35	BLF300B21168	BLF300B24168	21.25	BLF600B21168	BLF600B24168	39.00
8"	219.1	BLF150B21219	BLF150B24219	19.95	BLF300B21219	BLF300B24219	34.60	BLF600B21219	BLF600B24219	63.00
10"	273.0	BLF150B21273	BLF150B24273	29.40	BLF300B21273	BLF300B24273	55.50	BLF600B21273	BLF600B24273	105.00
12"	323.9	BLF150B21323	BLF150B24323	43.75	BLF300B21323	BLF300B24323	79.00	BLF600B21323	BLF600B24323	134.00



FLENZEN

SLIP ON

ASTM A182

ASTM A105/SA105N/C21

ASTM A350/SA350/LF2

ASME B16.5

150 LBS / 300 LBS



Wst. 1.4301
Wst. 1.4307 **304L**

Wst. 1.4401
Wst. 1.4404 **316L**

A105/N

LF2

Maat	D	304L 150LBS	316L 150LBS	KG	304L 300LBS	316L 300LBS	KG
Inch		Artikelnummer	Artikelnummer	PCS	Artikelnummer	Artikelnummer	PCS
1/2"	21.3	SOF150B4021	SOF150B6021	0.50	SOF300B4021	SOF300B6021	0.60
3/4"	26.7	SOF150B4026	SOF150B6026	0.60	SOF300B4026	SOF300B6026	1.10
1"	33.4	SOF150B4033	SOF150B6033	0.90	SOF300B4033	SOF300B6033	1.40
1.1/4"	42.4	SOF150B4042	SOF150B6042	1.10	SOF300B4042	SOF300B6042	1.70
1.1/2"	48.3	SOF150B4048	SOF150B6048	1.40	SOF300B4048	SOF300B6048	2.50
2"	60.3	SOF150B4060	SOF150B6060	2.30	SOF300B4060	SOF300B6060	2.80
2.1/2"	73.0	SOF150B4073	SOF150B6073	3.40	SOF300B4073	SOF300B6073	4.25
3"	88.9	SOF150B4088	SOF150B6088	3.90	SOF300B4088	SOF300B6088	5.80
4"	114.3	SOF150B4114	SOF150B6114	5.75	SOF300B4114	SOF300B6114	10.10
5"	141.3	SOF150B4141	SOF150B6141	6.25	SOF300B4141	SOF300B6141	12.60
6"	168.3	SOF150B4168	SOF150B6168	7.40	SOF300B4168	SOF300B6168	16.00
8"	219.1	SOF150B4219	SOF150B6219	12.40	SOF300B4219	SOF300B6219	24.50
10"	273.0	SOF150B4273	SOF150B6273	17.15	SOF300B4273	SOF300B6273	34.20
12"	323.9	SOF150B4323	SOF150B6323	27.75	SOF300B4323	SOF300B6323	51.30

Maat	D	A105/N 150LBS	LF2 150LBS	KG	A105/N 300lbs	LF2 300lbs	KG
Inch		Artikelnummer	Artikelnummer	PCS	Artikelnummer	Artikelnummer	PCS
1/2"	21.3	SOF150B21021	SOF150B24021	0.50	SOF300B21021	SOF300B24021	0.60
3/4"	26.7	SOF150B21026	SOF150B24026	0.60	SOF300B21026	SOF300B24026	1.10
1"	33.4	SOF150B21033	SOF150B24033	0.90	SOF300B21033	SOF300B24033	1.40
1.1/4"	42.4	SOF150B21042	SOF150B24042	1.10	SOF300B21042	SOF300B24042	1.70
1.1/2"	48.3	SOF150B21048	SOF150B24048	1.40	SOF300B21048	SOF300B24048	2.50
2"	60.3	SOF150B21060	SOF150B24060	2.30	SOF300B21060	SOF300B24060	2.80
2.1/2"	73.0	SOF150B21073	SOF150B24073	3.40	SOF300B21073	SOF300B24073	4.25
3"	88.9	SOF150B21088	SOF150B24088	3.90	SOF300B21088	SOF300B24088	5.80
4"	114.3	SOF150B21114	SOF150B24114	5.75	SOF300B21114	SOF300B24114	10.10
5"	141.3	SOF150B21141	SOF150B24141	6.25	SOF300B21141	SOF300B24141	12.60
6"	168.3	SOF150B21168	SOF150B24168	7.40	SOF300B21168	SOF300B24168	16.00
8"	219.1	SOF150B21219	SOF150B24219	12.40	SOF300B21219	SOF300B24219	24.50
10"	273.0	SOF150B21273	SOF150B24273	17.15	SOF300B21273	SOF300B24273	34.20
12"	323.9	SOF150B21323	SOF150B24323	27.75	SOF300B21323	SOF300B24323	51.30



ASTM A182
 ASTM A105/SA105N/C21
 ASTM A350/SA350/LF2
 ASME B16.5
 150 LBS / 300 LBS

304L Wst. 1.4301
 Wst. 1.4307

316L Wst. 1.4401
 Wst. 1.4404

A105/N

LF2

Maat	D	304L 150LBS	316L 150LBS	KG	304L 300LBS	316L 300LBS	KG
Inch		Artikelnummer	Artikelnummer	PCS	Artikelnummer	Artikelnummer	PCS
1/2"	21.3	LJF150A4021	LJF150A6021	0.50	LJF300A4021	LJF300A6021	0.60
3/4"	26.7	LJF150A4026	LJF150A6026	0.65	LJF300A4026	LJF300A6026	1.15
1"	33.4	LJF150A4033	LJF150A6033	0.95	LJF300A4033	LJF300A6033	1.40
1.1/4"	42.4	LJF150A4042	LJF150A6042	1.20	LJF300A4042	LJF300A6042	1.65
1.1/2"	48.3	LJF150A4048	LJF150A6048	1.50	LJF300A4048	LJF300A6048	2.50
2"	60.3	LJF150A4060	LJF150A6060	2.40	LJF300A4060	LJF300A6060	2.80
2.1/2"	73.0	LJF150A4073	LJF150A6073	3.60	LJF300A4073	LJF300A6073	4.20
3"	88.9	LJF150A4088	LJF150A6088	4.05	LJF300A4088	LJF300A6088	7.75
4"	114.3	LJF150A4114	LJF150A6114	6.00	LJF300A4114	LJF300A6114	10.10
5"	141.3	LJF150A4141	LJF150A6141	6.45	LJF300A4141	LJF300A6141	12.55
6"	168.3	LJF150A4168	LJF150A6168	7.60	LJF300A4168	LJF300A6168	15.95
8"	219.1	LJF150A4219	LJF150A6219	12.70	LJF300A4219	LJF300A6219	24.40
10"	273.0	LJF150A4273	LJF150A6273	16.80	LJF300A4273	LJF300A6273	39.90
12"	323.9	LJF150A4323	LJF150A6323	28.30	LJF300A4323	LJF300A6323	58.75

Maat	D	A105/N 150LBS	LF2 150LBS	KG	A105/N 300lbs	LF2 300lbs	KG
Inch		Artikelnummer	Artikelnummer	PCS	Artikelnummer	Artikelnummer	PCS
1/2"	21.3	LJF150A21021	LJF150A24021	0.50	LJF300A21021	LJF300A24021	0.60
3/4"	26.7	LJF150A21026	LJF150A24026	0.65	LJF300A21026	LJF300A24026	1.15
1"	33.4	LJF150A21033	LJF150A24033	0.95	LJF300A21033	LJF300A24033	1.40
1.1/4"	42.4	LJF150A21042	LJF150A24042	1.20	LJF300A21042	LJF300A24042	1.65
1.1/2"	48.3	LJF150A21048	LJF150A24048	1.50	LJF300A21048	LJF300A24048	2.50
2"	60.3	LJF150A21060	LJF150A24060	2.40	LJF300A21060	LJF300A24060	2.80
2.1/2"	73.0	LJF150A21073	LJF150A24073	3.60	LJF300A21073	LJF300A24073	4.20
3"	88.9	LJF150A21088	LJF150A24088	4.05	LJF300A21088	LJF300A24088	7.75
4"	114.3	LJF150A21114	LJF150A24114	6.00	LJF300A21114	LJF300A24114	10.10
5"	141.3	LJF150A21141	LJF150A24141	6.45	LJF300A21141	LJF300A24141	12.55
6"	168.3	LJF150A21168	LJF150A24168	7.60	LJF300A21168	LJF300A24168	15.95
8"	219.1	LJF150A21219	LJF150A24219	12.70	LJF300A21219	LJF300A24219	24.40
10"	273.0	LJF150A21273	LJF150A24273	16.80	LJF300A21273	LJF300A24273	39.90
12"	323.9	LJF150A21323	LJF150A24323	28.30	LJF300A21323	LJF300A24323	58.75



FLENZEN

THREADED & SOCKET WELD

ASTM A182

ASTM A105/SA105N/C21

ASME B16.5

150 LBS / 300 LBS

Wst. 1.4301

Wst. 1.4307

304L

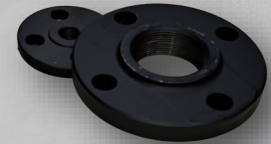
Wst. 1.4401

Wst. 1.4404

316L

A105/N

A105/N (VZ)



THREADED

Maat	Diameter	304L 150LBS	316L 150LBS	A105/N 150LBS	A105/N VERZINKT 150LBS	KG
Inch	In mm	Artikelnummer	Artikelnummer	Artikelnummer	Artikelnummer	/PCS
1/2"	21.3	THF150B4021	THF150B6021	THF150B21021	THF150B21021HDG	0.50
3/4"	26.7	THF150B4026	THF150B6026	THF150B21026	THF150B21026HDG	0.60
1"	33.4	THF150B4033	THF150B6033	THF150B21033	THF150B21033HDG	0.90
1.1/4"	42.4	THF150B4042	THF150B6042	THF150B21042	THF150B21042HDG	1.10
1.1/2"	48.3	THF150B4048	THF150B6048	THF150B21048	THF150B21048HDG	1.50
2"	60.3	THF150B4060	THF150B6060	THF150B21060	THF150B21060HDG	2.25
2.1/2"	73.0	THF150B4073	THF150B6073	THF150B21073	THF150B21073HDG	3.45
3"	88.9	THF150B4088	THF150B6088	THF150B21088	THF150B21088HDG	3.90
4"	114.3	THF150B4114	THF150B6114	THF150B21114	THF150B21114HDG	5.75

SOCKET WELD

Maat	Diameter	Wanddikte	304L 150lbs	316L 150lbs	A105/N 150lbs	KG
Inch	In mm	WT	Artikelnummer	Artikelnummer	Artikelnummer	/PCS
1/2" STD	21.3	2.77	SWF150B4021STD	SWF150B6021STD	SWF150B21021STD	0.70
1/2" XS	21.3	3.73	SWF150B4021XS	SWF150B6021XS	SWF150B21021XS	0.70
3/4" STD	26.7	2.87	SWF150B4026STD	SWF150B6026STD	SWF150B21026STD	1.20
3/4" XS	26.7	3.91	SWF150B4026XS	SWF150B6026XS	SWF150B21026XS	1.20
1" STD	33.4	3.38	SWF150B4033STD	SWF150B6033STD	SWF150B21033STD	1.50
1" XS	33.4	4.55	SWF150B4033XS	SWF150B6033XS	SWF150B21033XS	1.50
1.1/4" STD	42.2	3.56	SWF150B4042STD	SWF150B6042STD	SWF150B21042STD	1.90
1.1/4" XS	42.2	4.85	SWF150B4042XS	SWF150B6042XS	SWF150B21042XS	1.90
1.1/2" STD	48.3	3.68	SWF150B4048STD	SWF150B6048STD	SWF150B21048STD	2.80
1.1/2" XS	48.3	5.08	SWF150B4048XS	SWF150B6048XS	SWF150B21048XS	2.80
2" STD	60.3	3.91	SWF150B4060STD	SWF150B6060STD	SWF150B21060STD	3.50
2" XS	60.3	5.54	SWF150B4060XS	SWF150B6060XS	SWF150B21060XS	3.50

Maat	Diameter	Wanddikte	304L 300lbs	316L 300lbs	A105/N 300lbs	KG
Inch	In mm	WT	Artikelnummer	Artikelnummer	Artikelnummer	/PCS
1/2" STD	21.3	2.77	SWF300B4021STD	SWF300B6021STD	SWF300B21021STD	0.80
1/2" XS	21.3	3.73	SWF300B4021XS	SWF300B6021XS	SWF300B21021XS	0.80
3/4" STD	26.7	2.87	SWF300B4026STD	SWF300B6026STD	SWF300B21026STD	1.30
3/4" XS	26.7	3.91	SWF300B4026XS	SWF300B6026XS	SWF300B21026XS	1.40
1" STD	33.4	3.38	SWF300B4033STD	SWF300B6033STD	SWF300B21033STD	1.60
1" XS	33.4	4.55	SWF300B4033XS	SWF300B6033XS	SWF300B21033XS	1.70
1.1/4" STD	42.2	3.56	SWF300B4042STD	SWF300B6042STD	SWF300B21042STD	2.00
1.1/4" XS	42.2	4.85	SWF300B4042XS	SWF300B6042XS	SWF300B21042XS	2.20
1.1/2" STD	48.3	3.68	SWF300B4048STD	SWF300B6048STD	SWF300B21048STD	2.95
1.1/2" XS	48.3	5.08	SWF300B4048XS	SWF300B6048XS	SWF300B21048XS	3.25
2" STD	60.3	3.91	SWF300B4060STD	SWF300B6060STD	SWF300B21060STD	3.75
2" XS	60.3	5.54	SWF300B4060XS	SWF300B6060XS	SWF300B21060XS	4.01



Ook houden wij voorraad van voorlasflenzen type 11B met ASTM wanddiktes. Hieronder vindt u alleen een overzicht van de wanddiktes 10S (alleen RVS) en STD.

Bent u op zoek naar een andere wanddikte? Hanteer dan de maattabel van ASTM (pagina 7) bij uw aanvraag.

VOORLASFLENZEN DIN MET ASTM WANDDIKTES

FLENZEN

DIN/ASTM

304L

Wst. 1.4301
Wst. 1.4307

316L

Wst. 1.4401
Wst. 1.4404

P250GH

PN 10/16/25 & 40

DN	OD	10S	304L	316L	STD	304L	316L	P250GH
SIZE	OUTSIDE DIAMETER	WALL THICKNESS	ARTIKELNUMMER	ARTIKELNUMMER	WALL THICKNESS	ARTIKELNUMMER	ARTIKELNUMMER	ARTIKELNUMMER
15	21.30	2.11	11PN40B402110S	11PN40B602110S	2.77	11PN40B4021STD	11PN40B6021STD	11PN40B25021STD
20	26.90	2.11	11PN40B402610S	11PN40B602610S	2.87	11PN40B4026STD	11PN40B6026STD	11PN40B25026STD
25	33.70	2.77	11PN40B403310S	11PN40B603310S	3.38	11PN40B4033STD	11PN40B6033STD	11PN40B25033STD
32	42.40	2.77	11PN40B404210S	11PN40B604210S	3.56	11PN40B4042STD	11PN40B6042STD	11PN40B25042STD
40	48.30	2.77	11PN40B404810S	11PN40B604810S	3.68	11PN40B4048STD	11PN40B6048STD	11PN40B25048STD

PN 10/16

50	60.30	2.77	11PN16B406010S	11PN16B606010S	3.91	11PN16B4060STD	11PN16B6060STD	11PN16B25060STD
65*	73.00	3.05	11PN16B407310S	11PN16B607310S	5.16	11PN16B4073STD	11PN16B6073STD	11PN16B25073STD
65*	76.10	3.05	11PN16B407610S	11PN16B607610S	5.16	11PN16B4076STD	11PN16B6076STD	11PN16B25076STD
80	88.90	3.05	11PN16B408810S	11PN16B608810S	5.49	11PN16B4088STD	11PN16B6088STD	11PN16B25088STD
100	114.30	3.05	11PN16B411410S	11PN16B611410S	6.02	11PN16B4114STD	11PN16B6114STD	11PN16B25114STD
125*	139.40	3.40	11PN16B413910S	11PN16B613910S	6.56	11PN16B4139STD	11PN16B6139STD	11PN16B25139STD
125*	141.30	3.40	11PN16B414110S	11PN16B614110S	6.56	11PN16B4141STD	11PN16B6141STD	11PN16B25141STD
150	168.30	3.40	11PN16B416810S	11PN16B616810S	7.11	11PN16B4168STD	11PN16B6168STD	11PN16B25168STD

PN 25/40

50	60.30	2.77	11PN40B406010S	11PN40B606010S	3.91	11PN40B4060STD	11PN40B6060STD	11PN40B25060STD
65*	73.00	3.05	11PN40B407310S	11PN40B607310S	5.16	11PN40B4073STD	11PN40B6073STD	11PN40B25073STD
65*	76.10	3.05	11PN40B407610S	11PN40B607610S	5.16	11PN40B4076STD	11PN40B6076STD	11PN40B25076STD
80	88.90	3.05	11PN40B408810S	11PN40B608810S	5.49	11PN40B4088STD	11PN40B6088STD	11PN40B25088STD
100	114.30	3.05	11PN40B411410S	11PN40B611410S	6.02	11PN40B4114STD	11PN40B6114STD	11PN40B25114STD
125*	139.40	3.40	11PN40B413910S	11PN40B613910S	6.56	11PN40B4139STD	11PN40B6139STD	11PN40B25139STD
125*	141.30	3.40	11PN40B414110S	11PN40B614110S	6.56	11PN40B4141STD	11PN40B6141STD	11PN40B25141STD
150	168.30	3.40	11PN40B416810S	11PN40B616810S	7.11	11PN40B4168STD	11PN40B6168STD	11PN40B25168STD

PN 10

200	219.10	3.76	11PN10B421910S	11PN10B621910S	8.18	11PN10B4219STD	11PN10B6219STD	11PN10B25219STD
250	273.00	4.19	11PN10B427310S	11PN10B627310S	9.27	11PN10B4273STD	11PN10B6273STD	11PN10B25273STD
300	323.90	4.57	11PN10B432310S	11PN10B632310S	9.53	11PN10B4323STD	11PN10B6323STD	11PN10B25323STD
350	355.60	4.77	11PN10B435510S	11PN10B635510S	9.53	11PN10B4355STD	11PN10B6355STD	11PN10B25355STD
400	406.40	4.77	11PN10B440610S	11PN10B640610S	9.53	11PN10B4406STD	11PN10B6406STD	11PN10B25406STD
450	457.00	4.77	11PN10B445710S	11PN10B645710S	9.53	11PN10B4457STD	11PN10B6457STD	11PN10B25457STD
500	508.00	5.54	11PN10B450810S	11PN10B650810S	9.53	11PN10B4508STD	11PN10B6508STD	11PN10B25508STD
600	609.60	6.35	11PN10B460910S	11PN10B660910S	9.53	11PN10B4609STD	11PN10B6609STD	11PN10B25609STD

PN 16

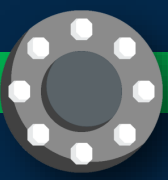
200	219.10	3.76	11PN16B421910S	11PN16B621910S	8.18	11PN16B4219STD	11PN16B6219STD	11PN16B25219STD
250	273.00	4.19	11PN16B427310S	11PN16B627310S	9.27	11PN16B4273STD	11PN16B6273STD	11PN16B25273STD
300	323.90	4.57	11PN16B432310S	11PN16B632310S	9.53	11PN16B4323STD	11PN16B6323STD	11PN16B25323STD
350	355.60	4.77	11PN16B435510S	11PN16B635510S	9.53	11PN16B4355STD	11PN16B6355STD	11PN16B25355STD
400	406.40	4.77	11PN16B440610S	11PN16B640610S	9.53	11PN16B4406STD	11PN16B6406STD	11PN16B25406STD
450	457.00	4.77	11PN16B445710S	11PN16B645710S	9.53	11PN16B4457STD	11PN16B6457STD	11PN16B25457STD
500	508.00	5.54	11PN16B450810S	11PN16B650810S	9.53	11PN16B4508STD	11PN16B6508STD	11PN16B25508STD
600	609.60	6.35	11PN16B460910S	11PN16B660910S	9.53	11PN16B4609STD	11PN16B6609STD	11PN16B25609STD

PN 25

200	219.10	3.76	11PN10B421910S	11PN10B621910S	8.18	11PN10B4219STD	11PN10B6219STD	11PN10B25219STD
250	273.00	4.19	11PN10B427310S	11PN10B627310S	9.27	11PN10B4273STD	11PN10B6273STD	11PN10B25273STD
300	323.90	4.57	11PN10B432310S	11PN10B632310S	9.53	11PN10B4323STD	11PN10B6323STD	11PN10B25323STD
350	355.60	4.77	11PN10B435510S	11PN10B635510S	9.53	11PN10B4355STD	11PN10B6355STD	11PN10B25355STD
400	406.40	4.77	11PN10B440610S	11PN10B640610S	9.53	11PN10B4406STD	11PN10B6406STD	11PN10B25406STD
450	457.00	4.77	11PN10B445710S	11PN10B645710S	9.53	11PN10B4457STD	11PN10B6457STD	11PN10B25457STD
500	508.00	5.54	11PN10B450810S	11PN10B650810S	9.53	11PN10B4508STD	11PN10B6508STD	11PN10B25508STD
600	609.60	6.35	11PN10B460910S	11PN10B660910S	9.53	11PN10B4609STD	11PN10B6609STD	11PN10B25609STD

PN 40

200	219.10	3.76	11PN10B421910S	11PN10B621910S	8.18	11PN10B4219STD	11PN10B6219STD	11PN10B25219STD
250	273.00	4.19	11PN10B427310S	11PN10B627310S	9.27	11PN10B4273STD	11PN10B6273STD	11PN10B25273STD
300	323.90	4.57	11PN10B432310S	11PN10B632310S	9.53	11PN10B4323STD	11PN10B6323STD	11PN10B25323STD
350	355.60	4.77	11PN10B435510S	11PN10B635510S	9.53	11PN10B4355STD	11PN10B6355STD	11PN10B25355STD
400	406.40	4.77	11PN10B440610S	11PN10B640610S	9.53	11PN10B4406STD	11PN10B6406STD	11PN10B25406STD
450	457.00	4.77	11PN10B445710S	11PN10B645710S	9.53	11PN10B4457STD	11PN10B6457STD	11PN10B25457STD
500	508.00	5.54	11PN10B450810S	11PN10B650810S	9.53	11PN10B4508STD	11PN10B6508STD	11PN10B25508STD
600	609.60	6.35	11PN10B460910S	11PN10B660910S	9.53	11PN10B4609STD	11PN10B6609STD	11PN10B25609STD



Ook voor bewerkingen van flenzen kunt u bij ons terecht

Dit doen wij niet zelf maar dit wordt in een samenwerking met een machinefabriek snel en kundig voor u gemaakt.

Hieronder een overzicht van de meest voorkomende bewerkingen van flenzen in EN en ASTM.

Flenzen DIN/EN

NPT/ BSP draadgat tappen
Wanddikte aanpassen
Pakkingsvlak aanpassen
Flenstype wijzigen
Feder Form C / Nut Form D
Vorsprung Form E / Rucksprung Form F
O-Ring-Vorsprung Form G / O-Ring-Nut Form H

Flenzen ASTM/ASME

NPT/ BSP draadgat tappen
Wanddikte aanpassen
Flenstype wijzigen
Pakkingsvlak aanpassen

- Pakkingsvlak voorzien van een ruwheid (Smooth Finish)
- Pakkingsvlak aanpassen bijvoorbeeld RF (Raised Face) naar FF (Flat Face)
- Pakkingsvlak voorzien van Large en Small Male / Female
- Pakkingsvlak voorzien van Large en Small Tongue / Groove
- RTJ (Ring Type Joint) maken uit een LRF (Large Raised Face)

Voor een compleet overzicht met technische data verwijzen wij u naar onze website onder het kopje "downloads".

