



304L Wst. 1.4301
Wst. 1.4307

316L Wst. 1.4401
Wst. 1.4404

P250GH

P250GH (Verzinkt)

PN 10/16/25 & 40							
DN	OD	PN	304L	316L	P250GH	P250GH VERZINKT	KG/PCS
SIZE	OUTSIDE DIAMETER	PRESSURE	ARTIKELNUMMER	ARTIKELNUMMER	ARTIKELNUMMER	ARTIKELNUMMER	
15	21.30	10/16/25/40	13PN40B4021	13PN40B6021	13PN40B25021	13PN40B25021HDG	0.70
20	26.90	10/16/25/40	13PN40B4026	13PN40B6026	13PN40B25026	13PN40B25026HDG	1.00
25	33.70	10/16/25/40	13PN40B4033	13PN40B6033	13PN40B25033	13PN40B25033HDG	1.30
32	42.40	10/16/25/40	13PN40B4042	13PN40B6042	13PN40B25042	13PN40B25042HDG	1.75
40	48.30	10/16/25/40	13PN40B4048	13PN40B6048	13PN40B25048	13PN40B25048HDG	2.00

PN 10/16							
SIZE	OUTSIDE DIAMETER	PRESSURE	ARTIKELNUMMER	ARTIKELNUMMER	ARTIKELNUMMER	ARTIKELNUMMER	KG/PCS
50	60.30	10/16	13PN16B4060	13PN16B6060	13PN16B25060	13PN16B25060HDG	2.50
65 - 4	76.10	10/16	13PN16B4076-4	13PN16B6076-4	13PN16B25076-4	13PN16B25076-4HDG	3.00
65 - 8	76.10	10/16	13PN16B4076-8	13PN16B6076-8	13PN16B25076-8	13PN16B25076-8HDG	3.00
80	88.90	10/16	13PN16B4088	13PN16B6088	13PN16B25088	13PN16B25088HDG	3.75
100	114.30	10/16	13PN16B4114	13PN16B6114	13PN16B25114	13PN16B25114HDG	4.50

PN 25/40							
SIZE	OUTSIDE DIAMETER	PRESSURE	ARTIKELNUMMER	ARTIKELNUMMER	ARTIKELNUMMER	ARTIKELNUMMER	KG/PCS
50	60.30	25/40	13PN40B4060	13PN40B6060	13PN40B25060	13PN40B25060HDG	2.75
65 - 4	76.10	25/40	13PN40B4076-4	13PN40B6076-4	13PN40B25076-4	13PN40B25076-4HDG	3.75
65 - 8	76.10	25/40	13PN40B4076-8	13PN40B6076-8	13PN40B25076-8	13PN40B25076-8HDG	3.75
80	88.90	25/40	13PN40B4088	13PN40B6088	13PN40B25088	13PN40B25088HDG	4.50
100	114.30	25/40	13PN40B4114	13PN40B6114	13PN40B25114	13PN40B25114HDG	6.00





FLENZEN

THREADED & SOCKET WELD

ASTM A182

ASTM A105/SA105N/C21

ASME B16.5

150 LBS / 300 LBS

Wst. 1.4301

Wst. 1.4307

304L

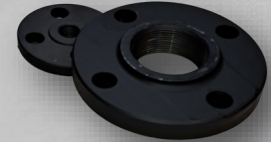
Wst. 1.4401

Wst. 1.4404

316L

A105/N

A105/N (VZ)



THREADED						
Maat	Diameter	304L 150LBS	316L 150LBS	A105/N 150LBS	A105/N VERZINKT 150LBS	KG
Inch	In mm	Artikelnummer	Artikelnummer	Artikelnummer	Artikelnummer	/PCS
1/2"	21.3	THF150B4021	THF150B6021	THF150B21021	THF150B21021HDG	0.50
3/4"	26.7	THF150B4026	THF150B6026	THF150B21026	THF150B21026HDG	0.60
1"	33.4	THF150B4033	THF150B6033	THF150B21033	THF150B21033HDG	0.90
1.1/4"	42.4	THF150B4042	THF150B6042	THF150B21042	THF150B21042HDG	1.10
1.1/2"	48.3	THF150B4048	THF150B6048	THF150B21048	THF150B21048HDG	1.50
2"	60.3	THF150B4060	THF150B6060	THF150B21060	THF150B21060HDG	2.25
2.1/2"	73.0	THF150B4073	THF150B6073	THF150B21073	THF150B21073HDG	3.45
3"	88.9	THF150B4088	THF150B6088	THF150B21088	THF150B21088HDG	3.90
4"	114.3	THF150B4114	THF150B6114	THF150B21114	THF150B21114HDG	5.75

SOCKET WELD

Maat	Diameter	Wanddikte	304L 150lbs	316L 150lbs	A105/N 150lbs	KG
Inch	In mm	WT	Artikelnummer	Artikelnummer	Artikelnummer	/PCS
1/2" STD	21.3	2.77	SWF150B4021STD	SWF150B6021STD	SWF150B21021STD	0.70
1/2" XS	21.3	3.73	SWF150B4021XS	SWF150B6021XS	SWF150B21021XS	0.70
3/4" STD	26.7	2.87	SWF150B4026STD	SWF150B6026STD	SWF150B21026STD	1.20
3/4" XS	26.7	3.91	SWF150B4026XS	SWF150B6026XS	SWF150B21026XS	1.20
1" STD	33.4	3.38	SWF150B4033STD	SWF150B6033STD	SWF150B21033STD	1.50
1" XS	33.4	4.55	SWF150B4033XS	SWF150B6033XS	SWF150B21033XS	1.50
1.1/4" STD	42.2	3.56	SWF150B4042STD	SWF150B6042STD	SWF150B21042STD	1.90
1.1/4" XS	42.2	4.85	SWF150B4042XS	SWF150B6042XS	SWF150B21042XS	1.90
1.1/2" STD	48.3	3.68	SWF150B4048STD	SWF150B6048STD	SWF150B21048STD	2.80
1.1/2" XS	48.3	5.08	SWF150B4048XS	SWF150B6048XS	SWF150B21048XS	2.80
2" STD	60.3	3.91	SWF150B4060STD	SWF150B6060STD	SWF150B21060STD	3.50
2" XS	60.3	5.54	SWF150B4060XS	SWF150B6060XS	SWF150B21060XS	3.50

Maat	Diameter	Wanddikte	304L 300lbs	316L 300lbs	A105/N 300lbs	KG
Inch	In mm	WT	Artikelnummer	Artikelnummer	Artikelnummer	/PCS
1/2" STD	21.3	2.77	SWF300B4021STD	SWF300B6021STD	SWF300B21021STD	0.80
1/2" XS	21.3	3.73	SWF300B4021XS	SWF300B6021XS	SWF300B21021XS	0.80
3/4" STD	26.7	2.87	SWF300B4026STD	SWF300B6026STD	SWF300B21026STD	1.30
3/4" XS	26.7	3.91	SWF300B4026XS	SWF300B6026XS	SWF300B21026XS	1.40
1" STD	33.4	3.38	SWF300B4033STD	SWF300B6033STD	SWF300B21033STD	1.60
1" XS	33.4	4.55	SWF300B4033XS	SWF300B6033XS	SWF300B21033XS	1.70
1.1/4" STD	42.2	3.56	SWF300B4042STD	SWF300B6042STD	SWF300B21042STD	2.00
1.1/4" XS	42.2	4.85	SWF300B4042XS	SWF300B6042XS	SWF300B21042XS	2.20
1.1/2" STD	48.3	3.68	SWF300B4048STD	SWF300B6048STD	SWF300B21048STD	2.95
1.1/2" XS	48.3	5.08	SWF300B4048XS	SWF300B6048XS	SWF300B21048XS	3.25
2" STD	60.3	3.91	SWF300B4060STD	SWF300B6060STD	SWF300B21060STD	3.75
2" XS	60.3	5.54	SWF300B4060XS	SWF300B6060XS	SWF300B21060XS	4.01

