

4. BSP-fittingen



Bochten
T-, Y- & Kruisstukken
Nippels
Sokken
Verloopringen

Pluggen
Kappen
Sluitmoeren
Slangpilaren

RVS	Staal
◆ 316 / 316L - 1.4401 / 1.4404	◆ S235 (onbehandeld)
	◆ Thermisch verzinkt

304L ligt niet op voorraad, deze zijn echter wel te leveren!



BSP-FITTINGEN

BOCHTEN

Wst. 1.4401
Wst. 1.4404

316L

Onbehandeld **Zwart**

Verzinkt

Screwed bend / draadbocht 90° Male/Female - 001

S235

Verzinkt



Maatvoering	Artikelnummer	Artikelnummer
1/8"	00119010RG	00119010RGHDG
1/4"	00119013RG	00119013RGHDG
3/8"	00119017RG	00119017RGHDG
1/2"	00119021RG	00119021RGHDG
3/4"	00119026RG	00119026RGHDG
1"	00119033RG	00119033RGHDG
1.1/4"	00119042RG	00119042RGHDG
1.1/2"	00119048RG	00119048RGHDG
2"	00119060RG	00119060RGHDG
2.1/2"	00119076RG	00119076RGHDG
3"	00119088RG	00119088RGHDG
4"	00119114RG	00119114RGHDG

Screwed bend / draadbocht 90° Female/Female - 002

S235

Verzinkt



Maatvoering	Artikelnummer	Artikelnummer
1/8"	00219010R	00219010RHHDG
1/4"	00219013R	00219013RHHDG
3/8"	00219017R	00219017RHHDG
1/2"	00219021R	00219021RHHDG
3/4"	00219026R	00219026RHHDG
1"	00219033R	00219033RHHDG
1.1/4"	00219042G	00219042GHHDG
1.1/2"	00219048G	00219048GHHDG
2"	00219060G	00219060GHHDG
2.1/2"	00219076G	00219076GHHDG
3"	00219088G	00219088GHHDG
4"	00219114G	00219114GHHDG

Screwed bend / draadbocht 90° Male/Male - 003

316L

Verzinkt



Maatvoering	Artikelnummer	Artikelnummer
1/8"	0036010R	
1/4"	0036013R	
3/8"	0036017R	
1/2"	0036021R	00319021RGHDG
3/4"	0036026R	00319026RGHDG
1"	0036033R	00319033RGHDG
1.1/4"	0036042R	
1.1/2"	0036048R	00319048RGHDG
2"	0036060R	

Elbow / Knie 90° Female - 090

316L

S235

Verzinkt



Maatvoering	Artikelnummer	Artikelnummer	Artikelnummer
1/8"	0906010G	09019010G	09019010GHHDG
1/4"	0906013G	09019013G	09019013GHHDG
3/8"	0906017G	09019017G	09019017GHHDG
1/2"	0906021G	09019021G	09019021GHHDG
3/4"	0906026G	09019026G	09019026GHHDG
1"	0906033G	09019033G	09019033GHHDG
1.1/4"	0906042G	09019042G	09019042GHHDG
1.1/2"	0906048G	09019048G	09019048GHHDG
2"	0906060G	09019060G	09019060GHHDG
2.1/2"	0906076G	09019076G	09019076GHHDG
3"	0906088G	09019088G	09019088GHHDG
4"	0906114G	09019114G	09019114GHHDG



316L Wst. 1.4401
Wst. 1.4404

S235 Onbehandeld

Verzinkt S235

Elbow / Knie 90° Male/Female - 092



	316L	S235	Verzinkt
Maatvoering	Artikelnummer	Artikelnummer	Artikelnummer
1/8"	0926010RG	09219010RG	09219010RGHDG
1/4"	0926013RG	09219013RG	09219013RGHDG
3/8"	0926017RG	09219017RG	09219017RGHDG
1/2"	0926021RG	09219021RG	09219021RGHDG
3/4"	0926026RG	09219026RG	09219026RGHDG
1"	0926033RG	09219033RG	09219033RGHDG
1.1/4"	0926042RG	09219042RG	09219042RGHDG
1.1/2"	0926048RG	09219048RG	09219048RGHDG
2"	0926060RG	09219060RG	09219060RGHDG
2.1/2"	0926076RG	09219076RG	09219076RGHDG
3"	0926088RG	09219088RG	09219088RGHDG
4"	0926114RG	09219114RG	09219114RGHDG

Elbow / Knie 45° Female - 045



	316L	S235	Verzinkt
Maatvoering	Artikelnummer	Artikelnummer	Artikelnummer
1/8"	0456010G	04519010G	04519010GHDG
1/4"	0456013G	04519013G	04519013GHDG
3/8"	0456017G	04519017G	04519017GHDG
1/2"	0456021G	04519021G	04519021GHDG
3/4"	0456026G	04519026G	04519026GHDG
1"	0456033G	04519033G	04519033GHDG
1.1/4"	0456042G	04519042G	04519042GHDG
1.1/2"	0456048G	04519048G	04519048GHDG
2"	0456060G	04519060G	04519060GHDG
2.1/2"	0456076G	04519076G	04519076GHDG
3"	0456088G	04519088G	04519088GHDG
4"	0456114G	04519114G	04519114GHDG

Tee equal / T-Stuk - 130



	316L	S235	Verzinkt
Maatvoering	Artikelnummer	Artikelnummer	Artikelnummer
1/8"	1306010G	13019010G	13019010GHDG
1/4"	1306013G	13019013G	13019013GHDG
3/8"	1306017G	13019017G	13019017GHDG
1/2"	1306021G	13019021G	13019021GHDG
3/4"	1306026G	13019026G	13019026GHDG
1"	1306033G	13019033G	13019033GHDG
1.1/4"	1306042G	13019042G	13019042GHDG
1.1/2"	1306048G	13019048G	13019048GHDG
2"	1306060G	13019060G	13019060GHDG
2.1/2"	1306076G	13019076G	13019076GHDG
3"	1306088G	13019088G	13019088GHDG
4"	1306114G	13019114G	13019114GHDG

Reducing Tee / Reducerende T-Stukken - 130



	316L	S235	Verzinkt
Maatvoering	Artikelnummer	Artikelnummer	Artikelnummer
1/2" x 1/4"	1306021013RG	13019021013RG	13019021013RGHDG
3/4" x 1/4"	1306026013RG	13019026013RG	13019026013RGHDG
3/4" x 1/2"	1306026021RG	13019026021RG	13019026021RGHDG
1.1/2" x 3/8"	1306028017RG	13019028017RG	13019028017RGHDG
1" x 1/2"	1306033021RG	13019033021RG	13019033021RGHDG
1" x 3/4"	1306033026RG	13019033026RG	13019033026RGHDG
1.1/4" x 3/4"	1306042026RG	13019042026RG	13019042026RGHDG
1.1/4" x 1"	1306042033RG	13019042033RG	13019042033RGHDG
1.1/2" x 3/4"	1306048026RG	13019048026RG	13019048026RGHDG
1.1/2" x 1"	1306048033RG	13019048033RG	13019048033RGHDG
1.1/2" x 1.1/4"	1306048042RG	13019048042RG	13019048042RGHDG
2" x 1/2"	1306060021RG	13019060021RG	13019060021RGHDG
2" x 3/4"	1306060026RG	13019060026RG	13019060026RGHDG
2" x 1"	1306060033RG	13019060033RG	13019060033RGHDG
2" x 1.1/4"	1306060042RG	13019060042RG	13019060042RGHDG
2" x 1.1/2"	1306060048RG	13019060048RG	13019060048RGHDG



BSP-FITTINGEN

Y- & KRUISSTUKKEN & NIPPELS

Wst. 1.4401
Wst. 1.4404

316L

Onbehandeld

S235

S235

Verzinkt

Y-piece / Y-stuk - 161



316L

Maatvoering	Artikelnummer
1/8"	1616010G
1/4"	1616013G
3/8"	1616017G
1/2"	1616021G
3/4"	1616026G
1"	1616033G
1.1/4"	1616042G
1.1/2"	1616048G
2"	1616060G

Cross / Kruisstuk - 180



316L

S235

Verzinkt

Maatvoering	Artikelnummer	Artikelnummer	Artikelnummer
1/8"	1806010G	18019010G	18019010GHDG
1/4"	1806013G	18019013G	18019013GHDG
3/8"	1806017G	18019017G	18019017GHDG
1/2"	1806021G	18019021G	18019021GHDG
3/4"	1806026G	18019026G	18019026GHDG
1"	1806033G	18019033G	18019033GHDG
1.1/4"	1806042G	18019042G	18019042GHDG
1.1/2"	1806048G	18019048G	18019048GHDG
2"	1806060G	18019060G	18019060GHDG
2.1/2"	1806076G	18019076G	18019076GHDG
3"	1806088G	18019088G	18019088GHDG
4"	1806114G	18019114G	18019114GHDG

Welded nipple / Lasnippel één zijde draad—023B



316L

Maatvoering	Artikelnummer
1/8" x 30 mm	023B6010030R
1/4" x 30 mm	023B6013030R
3/8" x 30 mm	023B6017030R
3/8" x 50 mm	023B6017050R
1/2" x 35 mm	023B6021035R
1/2" x 50 mm	023B6021050R
1/2" x 60 mm	023B6021060R
1/2" x 100 mm	023B6021100R
1/2" x 100 mm	023B6021200R
3/4" x 40 mm	023B6026040R
3/4" x 50 mm	023B6026050R
3/4" x 100 mm	023B6026100R
1" x 40 mm	023B6033040R
1" x 50 mm	023B6033050R
1" x 100 mm	023B6033100R
1" x 130 mm	023B6033130R
1" x 140 mm	023B6033140R
1.1/4" x 50 mm	023B6042050R
1.1/4" x 100 mm	023B6042100R
1.1/2" x 50 mm	023B6048050R
1.1/2" x 100 mm	023B6048100R
2" x 50 mm	023B6060050R
2" x 60 mm	023B6060060R
2" x 100 mm	023B6060100R
2" x 120 mm	023B6060120R
2" x 150 mm	023B6060150R
2" x 250 mm	023B6060250R
2.1/2" x 60 mm	023B6076060R
3" x 70 mm	023B6088070R
3" x 150 mm	023B6088150R
4" x 80 mm	023B6114080R
5" x 80 mm	023B6139080R
6" x 100 mm	023B6168100R





316L Wst. 1.4401
Wst. 1.4404

S235 Onbehandeld

Verzinkt S235

Pipe nipple / Pijpnipple beide zijden draad - 023

Maatvoering	316L Artikelnummer	S235 Artikelnummer	Verzinkt Artikelnummer
1/4" x 40 mm	0236013040R	02319013040R	02319013040RHDG
1/4" x 60 mm	0236013060R	02319013060R	02319013060RHDG
1/4" x 80 mm	0236013080R	02319013080R	02319013080RHDG
1/4" x 100 mm	0236013100R	02319013100R	02319013100RHDG
1/4" x 150 mm	0236013150R	02319013150R	02319013150RHDG
1/4" x 200 mm	0236013200R	02319013200R	02319013200RHDG
3/8" x 40 mm	0236017040R	02319017040R	02319017040RHDG
3/8" x 100 mm	0236017100R	02319017100R	02319017100RHDG
3/8" x 120 mm	0236017120R	02319017120R	02319017120RHDG
1/2" x 60 mm	0236021060R	02319021060R	02319021060RHDG
1/2" x 70 mm	0236021070R	02319021070R	02319021070RHDG
1/2" x 80 mm	0236021080R	02319021080R	02319021080RHDG
1/2" x 100 mm	0236021100R	02319021100R	02319021100RHDG
1/2" x 120 mm	0236021120R	02319021120R	02319021120RHDG
1/2" x 130 mm	0236021130R	02319021130R	02319021130RHDG
1/2" x 150 mm	0236021150R	02319021150R	02319021150RHDG
1/2" x 200 mm	0236021200R	02319021200R	02319021200RHDG
1/2" x 250 mm	0236021250R	02319021250R	02319021250RHDG
3/4" x 60 mm	0236026060R	02319026060R	02319026060RHDG
3/4" x 80 mm	0236026080R	02319026080R	02319026080RHDG
3/4" x 100 mm	0236026100R	02319026100R	02319026100RHDG
3/4" x 120 mm	0236026120R	02319026120R	02319026120RHDG
3/4" x 150 mm	0236026150R	02319026150R	02319026150RHDG
3/4" x 200 mm	0236026200R	02319026200R	02319026200RHDG
1" x 60 mm	0236033060R	02319033060R	02319033060RHDG
1" x 100 mm	0236033100R	02319033100R	02319033100RHDG
1" x 120 mm	0236033120R	02319033120R	02319033120RHDG
1" x 150 mm	0236033150R	02319033150R	02319033150RHDG
1" x 200 mm	0236033200R	02319033200R	02319033200RHDG
1" x 250 mm	0236033250R	02319033250R	02319033250RHDG
1.1/4" x 80 mm	0236042080R	02319042080R	02319042080RHDG
1.1/4" x 100 mm	0236042100R	02319042100R	02319042100RHDG
1.1/4" x 180 mm	0236042180R	02319042180R	02319042180RHDG
1.1/4" x 210 mm	0236042210R	02319042210R	02319042210RHDG
1.1/2" x 80 mm	0236048080R	02319048080R	02319048080RHDG
1.1/2" x 100 mm	0236048100R	02319048100R	02319048100RHDG
1.1/2" x 120 mm	0236048120R	02319048120R	02319048120RHDG
1.1/2" x 150 mm	0236048150R	02319048150R	02319048150RHDG
1.1/2" x 200 mm	0236048200R	02319048200R	02319048200RHDG
2" x 100 mm	0236060100R	02319060100R	02319060100RHDG
2" x 200 mm	0236060200R	02319060200R	02319060200RHDG
2" x 250 mm	0236060250R	02319060250R	02319060250RHDG
2.1/2" x 100 mm	0236076100R	02319076100R	02319076100RHDG
2.1/2" x 200 mm	0236076200R	02319076200R	02319076200RHDG
3" x 100 mm	0236088100R	02319088100R	02319088100RHDG
3" x 120 mm	0236088120R	02319088120R	02319088120RHDG
3" x 200 mm	0236088200R	02319088200R	02319088200RHDG
3" x 300 mm	0236088300R	02319088300R	02319088300RHDG
4" x 120 mm	0236114120R	02319114120R	02319114120RHDG
6" x 100 mm	0236168120R	02319168120R	02319168120RHDG





BSP-FITTINGEN

NIPPELS

Wst. 1.4401
Wst. 1.4404

316L

Onbehandeld

S235

S235

Verzinkt

Reducing hexagon nipple / Verloopnippel - 245



	316L	S235	Verzinkt
Maatvoering	Artikelnummer	Artikelnummer	Artikelnummer
1/4" x 1/8"	2456013010R	24519013010R	24519013010RHGDG
3/8" x 1/8"	2456017010R	24519017010R	24519017010RHGDG
3/8" x 1/4"	2456017013R	24519017013R	24519017013RHGDG
1/2" x 1/8"	2456021010R	24519021010R	24519021010RHGDG
1/2" x 1/4"	2456021013R	24519021013R	24519021013RHGDG
1/2" x 3/8"	2456021017R	24519021017R	24519021017RHGDG
3/4" x 1/8"	2456026010R	24519026010R	24519026010RHGDG
3/4" x 1/4"	2456026013R	24519026013R	24519026013RHGDG
3/4" x 3/8"	2456026017R	24519026017R	24519026017RHGDG
3/4" x 1/2"	2456026021R	24519026021R	24519026021RHGDG
1" x 3/8"	2456033017R	24519033017R	24519033017RHGDG
1" x 1/2"	2456033021R	24519033021R	24519033021RHGDG
1" x 3/4"	2456033026R	24519033026R	24519033026RHGDG
1.1/4" x 1/2"	2456042021R	24519042021R	24519042021RHGDG
1.1/4" x 3/4"	2456042026R	24519042026R	24519042026RHGDG
1.1/4" x 1"	2456042033R	24519042033R	24519042033RHGDG
1.1/2" x 1/2"	2456048021R	24519048021R	24519048021RHGDG
1.1/2" x 3/4"	2456048026R	24519048026R	24519048026RHGDG
1.1/2" x 1"	2456048033R	24519048033R	24519048033RHGDG
1.1/2" x 1.1/4"	2456048042R	24519048042R	24519048042RHGDG
2" x 1/2"	2456060021R	24519060021R	24519060021RHGDG
2" x 3/4"	2456060026R	24519060026R	24519060026RHGDG
2" x 1"	2456060033R	24519060033R	24519060033RHGDG
2" x 1.1/4"	2456060042R	24519060042R	24519060042RHGDG
2" x 1.1/2"	2456060048R	24519060048R	24519060048RHGDG
2.1/2" x 1"	2456076033R	24519076033R	24519076033RHGDG
2.1/2" x 1.1/4"	2456076042R	24519076042R	24519076042RHGDG
2.1/2" x 1.1/2"	2456076048R	24519076048R	24519076048RHGDG
2.1/2" x 2"	2456076060R	24519076060R	24519076060RHGDG
3" x 1.1/2"	2456088048R	24519088048R	24519088048RHGDG
3" x 2"	2456088060R	24519088060R	24519088060RHGDG
3" x 2.1/2"	2456088076R	24519088076R	24519088076RHGDG
4" x 2"	2456114060R	24519114060R	24519114060RHGDG
4" x 2.1/2"	2456114076R	24519114076R	24519114076RHGDG
4" x 3"	2456114088R	24519114088R	24519114088RHGDG

Hexagon nipple / Zeskant (dubbele) nippel - 280



	316L	S235	Verzinkt
Maatvoering	Artikelnummer	Artikelnummer	Artikelnummer
1/8"	2806010R	28019010R	28019010RHGDG
1/4"	2806013R	28019013R	28019013RHGDG
3/8"	2806017R	28019017R	28019017RHGDG
1/2"	2806021R	28019021R	28019021RHGDG
3/4"	2806026R	28019026R	28019026RHGDG
1"	2806033R	28019033R	28019033RHGDG
1.1/4"	2806042R	28019042R	28019042RHGDG
1.1/2"	2806048R	28019048R	28019048RHGDG
2"	2806060R	28019060R	28019060RHGDG
2.1/2"	2806076R	28019076R	28019076RHGDG
3"	2806088R	28019088R	28019088RHGDG
4"	2806114R	28019114R	28019114RHGDG





316L Wst. 1.4401
Wst. 1.4404

S235 Onbehandeld

Verzinkt S235

Reducing socket / Verloopsok - 240



	316L	S235	Verzinkt
Maatvoering	Artikelnummer	Artikelnummer	Artikelnummer
1/4" x 1/8"	2406013010G	24019013010G	24019013010GHGDG
3/8" x 1/8"	2406017010G	24019017010G	24019017010GHGDG
3/8" x 1/4"	2406017013G	24019017013G	24019017013GHGDG
1/2" x 1/8"	2406021010G	24019021010G	24019021010GHGDG
1/2" x 1/4"	2406021013G	24019021013G	24019021013GHGDG
1/2" x 3/8"	2406021017G	24019021017G	24019021017GHGDG
3/4" x 1/4"	2406026013G	24019026013G	24019026013GHGDG
3/4" x 3/8"	2406026017G	24019026017G	24019026017GHGDG
3/4" x 1/2"	2406026021G	24019026021G	24019026021GHGDG
1" x 1/4"	2406033013G	24019033013G	24019033013GHGDG
1" x 3/8"	2406033017G	24019033017G	24019033017GHGDG
1" x 1/2"	2406033021G	24019033021G	24019033021GHGDG
1" x 3/4"	2406033026G	24019033026G	24019033026GHGDG
1.1/4" x 1/2"	2406042021G	24019042021G	24019042021GHGDG
1.1/4" x 3/4"	2406042026G	24019042026G	24019042026GHGDG
1.1/4" x 1"	2406042033G	24019042033G	24019042033GHGDG
1.1/2" x 1/2"	2406048021G	24019048021G	24019048021GHGDG
1.1/2" x 3/4"	2406048026G	24019048026G	24019048026GHGDG
1.1/2" x 1"	2406048033G	24019048033G	24019048033GHGDG
1.1/2" x 1.1/4"	2406048042G	24019048042G	24019048042GHGDG
2" x 1/2"	2406060021G	24019060021G	24019060021GHGDG
2" x 3/4"	2406060026G	24019060026G	24019060026GHGDG
2" x 1"	2406060033G	24019060033G	24019060033GHGDG
2" x 1.1/4"	2406060042G	24019060042G	24019060042GHGDG
2" x 1.1/2"	2406060048G	24019060048G	24019060048GHGDG
2.1/2" x 1.1/2"	2406076048G	24019076048G	24019076048GHGDG
2.1/2" x 2"	2406076060G	24019076060G	24019076060GHGDG
3" x 1.1/2"	2406088048G	24019088048G	24019088048GHGDG
3" x 2"	2406088060G	24019088060G	24019088060GHGDG
3" x 2.1/2"	2406088076G	24019088076G	24019088076GHGDG
4" x 2"	2406114060G	24019114060G	24019114060GHGDG
4" x 3"	2406114088G	24019114088G	24019114088GHGDG

Socket / Sok - 270



	316L	S235	Verzinkt
Maatvoering	Artikelnummer	Artikelnummer	Artikelnummer
1/8"	2706010G	27019010G	27019010GHGDG
1/4"	2706013G	27019013G	27019013GHGDG
3/8"	2706017G	27019017G	27019017GHGDG
1/2"	2706021G	27019021G	27019021GHGDG
3/4"	2706026G	27019026G	27019026GHGDG
1"	2706033G	27019033G	27019033GHGDG
1.1/4"	2706042G	27019042G	27019042GHGDG
1.1/2"	2706048G	27019048G	27019048GHGDG
2"	2706060G	27019060G	27019060GHGDG
2.1/2"	2706076G	27019076G	27019076GHGDG
3"	2706088G	27019088G	27019088GHGDG
4"	2706114G	27019114G	27019114GHGDG

Socket half / Halve sok - 270A



	316L
Maatvoering	Artikelnummer
1/8"	270A6010G
1/4"	270A6013G
3/8"	270A6017G
1/2"	270A6021G
3/4"	270A6026G
1"	270A6033G
1.1/4"	270A6042G
1.1/2"	270A6048G
2"	270A6060G
2.1/2"	270A6076G
3"	270A6088G
4"	270A6114G



BSP-FITTINGEN

SOKKEN & VERLOOPRINGEN

Wst. 1.4401
Wst. 1.4404

316L

Onbehandeld

S235

S235

Verzinkt

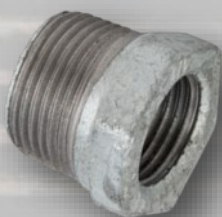
Socket / Sok egaal - 016



S235

Maatvoering	Artikelnummer
1/8"	01619010G
1/4"	01619013G
3/8"	01619017G
1/2"	01619021G
3/4"	01619026G
1"	01619033G
1.1/4"	01619042G
1.1/2"	01619048G
2"	01619060G
2.1/2"	01619076G
3"	01619088G
4"	01619114G

Bushing / Verloopring - 241



316L

S235

Verzinkt

Maatvoering	Artikelnummer	Artikelnummer	Artikelnummer
1/4" x 1/8"	2416013010RG	24119013010RG	24119013010RGHDG
3/8" x 1/8"	2416017010RG	24119017010RG	24119017010RGHDG
3/8" x 1/4"	2416017013RG	24119017013RG	24119017013RGHDG
1/2" x 1/8"	2416021010RG	24119021010RG	24119021010RGHDG
1/2" x 1/4"	2416021013RG	24119021013RG	24119021013RGHDG
1/2" x 3/8"	2416021017RG	24119021017RG	24119021017RGHDG
3/4" x 1/8"	2416026010RG	24119026010RG	24119026010RGHDG
3/4" x 1/4"	2416026013RG	24119026013RG	24119026013RGHDG
3/4" x 3/8"	2416026017RG	24119026017RG	24119026017RGHDG
3/4" x 1/2"	2416026021RG	24119026021RG	24119026021RGHDG
1.1/2" x 3/8"	2416028017RG	24119028017RG	24119028017RGHDG
1" x 1/4"	2416033013RG	24119033013RG	24119033013RGHDG
1" x 3/8"	2416033017RG	24119033017RG	24119033017RGHDG
1" x 1/2"	2416033021RG	24119033021RG	24119033021RGHDG
1" x 3/4"	2416033026RG	24119033026RG	24119033026RGHDG
1.1/4" x 1/2"	2416042021RG	24119042021RG	24119042021RGHDG
1.1/4" x 3/4"	2416042026RG	24119042026RG	24119042026RGHDG
1.1/4" x 1"	2416042033RG	24119042033RG	24119042033RGHDG
1.1/2" x 1/2"	2416048021RG	24119048021RG	24119048021RGHDG
1.1/2" x 3/4"	2416048026RG	24119048026RG	24119048026RGHDG
1.1/2" x 1"	2416048033RG	24119048033RG	24119048033RGHDG
1.1/2" x 1.1/4"	2416048042RG	24119048042RG	24119048042RGHDG
2" x 1/2"	2416060021RG	24119060021RG	24119060021RGHDG
2" x 3/4"	2416060026RG	24119060026RG	24119060026RGHDG
2" x 1"	2416060033RG	24119060033RG	24119060033RGHDG
2" x 1.1/4"	2416060042RG	24119060042RG	24119060042RGHDG
2" x 1.1/2"	2416060048RG	24119060048RG	24119060048RGHDG
2.1/2" x 1"	2416076033RG	24119076033RG	24119076033RGHDG
2.1/2" x 1.1/4"	2416076042RG	24119076042RG	24119076042RGHDG
2.1/2" x 1.1/2"	2416076048RG	24119076048RG	24119076048RGHDG
2.1/2" x 2"	2416076060RG	24119076060RG	24119076060RGHDG
3" x 1"	2416088033RG	24119088033RG	24119088033RGHDG
3" x 1.1/2"	2416088048RG	24119088048RG	24119088048RGHDG
3" x 2"	2416088060RG	24119088060RG	24119088060RGHDG
3" x 2.1/2"	2416088076RG	24119088076RG	24119088076RGHDG
4" x 2"	2416114060RG	24119114060RG	24119114060RGHDG
4" x 2.1/2"	2416114076RG	24119114076RG	24119114076RGHDG
4" x 3"	2416114088RG	24119114088RG	24119114088RGHDG



70





316L Wst. 1.4401
Wst. 1.4404

S235 Onbehandeld

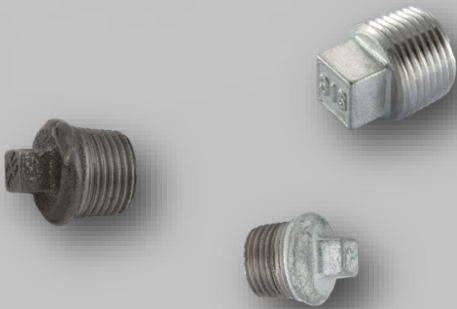
Verzinkt S235

Hexagon/octagon plug / 6/8 kant plug - 290



316L	
Maatvoering	Artikelnummer
1/8" 6k	2906010R
1/4" 6k	2906013R
3/8" 6k	2906017R
1/2" 6k	2906021R
3/4" 6k	2906026R
1" 8k	2906033R
1.1/4" 8k	2906042R
1.1/2" 8k	2906048R
2" 8k	2906060R
2.1/2" 8k	2906076R
3" 8k	2906088R
4" 8k	2906114R

Square plug / 4 kant plug - 290/291



	316L	S235	Verzinkt
Maatvoering	Artikelnummer	Artikelnummer	Artikelnummer
1/8"	2916010R	29019010R	29019010RHGDG
1/4"	2916013R	29019013R	29019013RHGDG
3/8"	2916017R	29019017R	29019017RHGDG
1/2"	2916021R	29019021R	29019021RHGDG
3/4"	2916026R	29019026R	29019026RHGDG
1"	2916033R	29019033R	29019033RHGDG
1.1/4"	2916042R	29019042R	29019042RHGDG
1.1/2"	2916048R	29019048R	29019048RHGDG
2"	2916060R	29019060R	29019060RHGDG
2.1/2"	2916076R	29019076R	29019076RHGDG
3"	2916088R	29019088R	29019088RHGDG
4"	2916114R	29019114R	29019114RHGDG

Hexagon/octagon cap / 6/8 kant kap - 300



	316L	S235	Verzinkt
Maatvoering	Artikelnummer	Artikelnummer	Artikelnummer
1/8" 6k	3006010G	30019010G	30019010GHGDG
1/4" 6k	3006013G	30019013G	30019013GHGDG
3/8" 6k	3006017G	30019017G	30019017GHGDG
1/2" 6k	3006021G	30019021G	30019021GHGDG
3/4" 6k	3006026G	30019026G	30019026GHGDG
1" 8k	3006033G	30019033G	30019033GHGDG
1.1/4" 8k	3006042G	30019042G	30019042GHGDG
1.1/2" 8k	3006048G	30019048G	30019048GHGDG
2" 8k	3006060G	30019060G	30019060GHGDG
2.1/2" 8k	3006076G	30019076G	30019076GHGDG
3" 8k	3006088G	30019088G	30019088GHGDG
4" 8k	3006114G	30019114G	30019114GHGDG

End cap round / Eindkap rond - 301



	316L	S235	Verzinkt
Maatvoering	Artikelnummer	Artikelnummer	Artikelnummer
1/8"	3016010G	30119010G	30119010GHGDG
1/4"	3016013G	30119013G	30119013GHGDG
3/8"	3016017G	30119017G	30119017GHGDG
1/2"	3016021G	30119021G	30119021GHGDG
3/4"	3016026G	30119026G	30119026GHGDG
1"	3016033G	30119033G	30119033GHGDG
1.1/4"	3016042G	30119042G	30119042GHGDG
1.1/2"	3016048G	30119048G	30119048GHGDG
2"	3016060G	30119060G	30119060GHGDG
2.1/2"	3016076G	30119076G	30119076GHGDG
3"	3016088G	30119088G	30119088GHGDG
4"	3016114G	30119114G	30119114GHGDG



BSP-FITTINGEN

SLUITMOEREN & SLANGPILAREN

Wst. 1.4401
Wst. 1.4404

316L

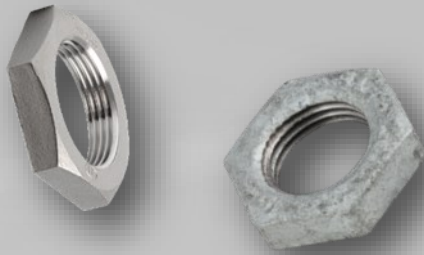
Onbehandeld

S235

S235

Verzinkt

Hexagon nut / Sluitmoer (6-kant moer) - 310



	316L	Verzinkt
Maatvoering	Artikelnummer	Artikelnummer
1/8"	3106010G	31019010GHDG
1/4"	3106013G	31019013GHDG
3/8"	3106017G	31019017GHDG
1/2"	3106021G	31019021GHDG
3/4"	3106026G	31019026GHDG
1"	3106033G	31019033GHDG
1.1/4"	3106042G	31019042GHDG
1.1/2"	3106048G	31019048GHDG
2"	3106060G	31019060GHDG
2.1/2"	3106076G	31019076GHDG
3"	3106088G	31019088GHDG
4"	3106114G	31019114GHDG

Hose nipple / Slangpilaar - 999



	316L
Maatvoering	Artikelnummer
1/8" x 7 mm	9996010007R
1/4" x 9 mm	9996013009R
3/8" x 11 mm	9996017011R
1/2" x 12.7 mm	9996021013R
3/4" x 13 mm	9996026013R
3/4" x 19 mm	9996026019R
3/4" x 20 mm	9996026020R
1" x 26 mm	9996033026R
1" x 30 mm	9996033030R
1.1/4" x 33 mm	9996042033R
1.1/2" x 38.1 mm	9996048038R
2" x 51 mm	9996060051R
2.1/2" x 63.5 mm	9996076063R
3" x 76.1 mm	9996088076R
4" x 102 mm	9996114102R

De maten in millimeters aangegeven zijn slangmaten.
 De slangpilaren zijn ook te bestellen met binnendraad.
 Ook kunt u slangnippels opvragen met een laskant of buitendraad.
 Hier hebben wij geen voorraad van.





316L Wst. 1.4401
Wst. 1.4404

S235 Onbehandeld

Verzinkt S235

Union / 3-delige koppeling conisch female /female - 340



	316L	S235	Verzinkt
Maatvoering	Artikelnummer	Artikelnummer	Artikelnummer
1/8"	3406010G	34019010G	34019010GHDG
1/4"	3406013G	34019013G	34019013GHDG
3/8"	3406017G	34019017G	34019017GHDG
1/2"	3406021G	34019021G	34019021GHDG
3/4"	3406026G	34019026G	34019026GHDG
1"	3406033G	34019033G	34019033GHDG
1.1/4"	3406042G	34019042G	34019042GHDG
1.1/2"	3406048G	34019048G	34019048GHDG
2"	3406060G	34019060G	34019060GHDG
2.1/2"	3406076G	34019076G	34019076GHDG
3"	3406088G	34019088G	34019088GHDG
4"	3406114G	34019114G	34019114GHDG

Union / 3-delige koppeling conisch male/female - 341



	316L	S235	Verzinkt
Maatvoering	Artikelnummer	Artikelnummer	Artikelnummer
1/8"	3416010RG	34119010RG	34119010RGHDG
1/4"	3416013RG	34119013RG	34119013RGHDG
3/8"	3416017RG	34119017RG	34119017RGHDG
1/2"	3416021RG	34119021RG	34119021RGHDG
3/4"	3416026RG	34119026RG	34119026RGHDG
1"	3416033RG	34119033RG	34119033RGHDG
1.1/4"	3416042RG	34119042RG	34119042RGHDG
1.1/2"	3416048RG	34119048RG	34119048RGHDG
2"	3416060RG	34119060RG	34119060RGHDG
2.1/2"	3416076RG	34119076RG	34119076RGHDG
3"	3416088RG	34119088RG	34119088RGHDG
4"	3416114RG	34119114RG	34119114RGHDG

De 3-delige koppelingen in RVS 316 zijn ook mogelijk in een Butt Weld (=las) uitvoering.
Vervang de G / RG met BW om ons artikelnummer te krijgen.

Niet gevonden wat u zocht? Neem gerust contact op en ons team zal uw vraag spoedig beantwoorden!