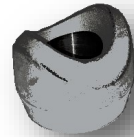


5. 3000lbs-fittingen



- | | |
|-------------------|-------------|
| Bochten | Pluggen |
| T- & Kruisstukken | Kappen |
| Nippels | Koppelingen |
| Sokken | Outlets |
| Verloopringen | |

RVS	Staal
◆ 316 / 316L - 1.4401 / 1.4404	◆ A105/N
	◆ Verzinkt
	◆ LF2
	◆ A106 Grade B
	◆ A333 Grade 6

304L ligt niet op voorraad, deze zijn echter wel te leveren.

Sommige 3000lbs fittingen zijn ook mogelijk in een socket weld uitvoering en LF2 materiaal. Deze worden onder de betreffende artikelen genoemd.

6000 lbs wordt hier niet weergegeven maar ook deze zijn op te vragen.



Elbow / Knie 90° Female/Female NPT



	316L	Zwart	Verzinkt
Maatvoering	Artikelnummer	Artikelnummer	Artikelnummer
1/8"	90FF3M6010N	90FF3M21010N	90FF3M21010NHGDG
1/4"	90FF3M6013N	90FF3M21013N	90FF3M21013NHGDG
3/8"	90FF3M6017N	90FF3M21017N	90FF3M21017NHGDG
1/2"	90FF3M6021N	90FF3M21021N	90FF3M21021NHGDG
3/4"	90FF3M6026N	90FF3M21026N	90FF3M21026NHGDG
1"	90FF3M6033N	90FF3M21033N	90FF3M21033NHGDG
1.1/4"	90FF3M6042N	90FF3M21042N	90FF3M21042NHGDG
1.1/2"	90FF3M6048N	90FF3M21048N	90FF3M21048NHGDG
2"	90FF3M6060N	90FF3M21060N	90FF3M21060NHGDG
2.1/2"	90FF3M6073N	90FF3M21073N	90FF3M21073NHGDG
3"	90FF3M6088N	90FF3M21088N	90FF3M21088NHGDG
4"	90FF3M6114N	90FF3M21114N	90FF3M21114NHGDG

- ◆ Ook in socket weld (SW) uitvoering. Artikel = N op het einde vervangen door SW
- ◆ Ook beschikbaar in LF2 kwaliteit. Artikel = 90FF3M24 gevolgd door maatvoering.

Elbow / Knie 90° Male/Female NPT



	316L	Zwart	Verzinkt
Maatvoering	Artikelnummer	Artikelnummer	Artikelnummer
1/8"	90MF3M6010N	90MF3M21010N	90MF3M21010NHGDG
1/4"	90MF3M6013N	90MF3M21013N	90MF3M21013NHGDG
3/8"	90MF3M6017N	90MF3M21017N	90MF3M21017NHGDG
1/2"	90MF3M6021N	90MF3M21021N	90MF3M21021NHGDG
3/4"	90MF3M6026N	90MF3M21026N	90MF3M21026NHGDG
1"	90MF3M6033N	90MF3M21033N	90MF3M21033NHGDG
1.1/4"	90MF3M6042N	90MF3M21042N	90MF3M21042NHGDG
1.1/2"	90MF3M6048N	90MF3M21048N	90MF3M21048NHGDG
2"	90MF3M6060N	90MF3M21060N	90MF3M21060NHGDG
2.1/2"	90MF3M6073N	90MF3M21073N	90MF3M21073NHGDG
3"	90MF3M6088N	90MF3M21088N	90MF3M21088NHGDG
4"	90MF3M6114N	90MF3M21114N	90MF3M21114NHGDG

Elbow / Knie 45° Female/Female NPT



	316L	Zwart	Verzinkt
Maatvoering	Artikelnummer	Artikelnummer	Artikelnummer
1/8"	45FF3M6010N	45FF3M21010N	45FF3M21010NHGDG
1/4"	45FF3M6013N	45FF3M21013N	45FF3M21013NHGDG
3/8"	45FF3M6017N	45FF3M21017N	45FF3M21017NHGDG
1/2"	45FF3M6021N	45FF3M21021N	45FF3M21021NHGDG
3/4"	45FF3M6026N	45FF3M21026N	45FF3M21026NHGDG
1"	45FF3M6033N	45FF3M21033N	45FF3M21033NHGDG
1.1/4"	45FF3M6042N	45FF3M21042N	45FF3M21042NHGDG
1.1/2"	45FF3M6048N	45FF3M21048N	45FF3M21048NHGDG
2"	45FF3M6060N	45FF3M21060N	45FF3M21060NHGDG

- ◆ Ook in SW uitvoering
- ◆ Ook mogelijk in LF2



3000LBS FITTINGEN

T-, KRUISSTUKKEN & NIPPELS

Wst. 1.4401
Wst. 1.4404

316L

A105/N

A105/N

Verzinkt

Tee / T-stuk NPT



	316L	A105/N	Verzinkt
Maatvoering	Artikelnummer	Artikelnummer	Artikelnummer
1/8"	TE3M6010N	TE3M21010N	TE3M21010NHGDG
1/4"	TE3M6013N	TE3M21013N	TE3M21013NHGDG
3/8"	TE3M6017N	TE3M21017N	TE3M21017NHGDG
1/2"	TE3M6021N	TE3M21021N	TE3M21021NHGDG
3/4"	TE3M6026N	TE3M21026N	TE3M21026NHGDG
1"	TE3M6033N	TE3M21033N	TE3M21033NHGDG
1.1/4"	TE3M6042N	TE3M21042N	TE3M21042NHGDG
1.1/2"	TE3M6048N	TE3M21048N	TE3M21048NHGDG
2"	TE3M6060N	TE3M21060N	TE3M21060NHGDG
2.1/2"	TE3M6073N	TE3M21073N	TE3M21073NHGDG
3"	TE3M6088N	TE3M21088N	TE3M21088NHGDG
4"	TE3M6114N	TE3M21114N	TE3M21114NHGDG

- ◆ Ook in SW uitvoering
- ◆ Ook mogelijk in LF2

Cross / Kruisstuk NPT



	A105/N	Verzinkt
Maatvoering	Artikelnummer	Artikelnummer
1/8"	X3M21010N	X3M21010NHGDG
1/4"	X3M21013N	X3M21013NHGDG
3/8"	X3M21017N	X3M21017NHGDG
1/2"	X3M21021N	X3M21021NHGDG
3/4"	X3M21026N	X3M21026NHGDG
1"	X3M21033N	X3M21033NHGDG
1.1/4"	X3M21042N	X3M21042NHGDG
1.1/2"	X3M21048N	X3M21048NHGDG
2"	X3M21060N	X3M21060NHGDG
2.1/2"	X3M21073N	X3M21073NHGDG
3"	X3M21088N	X3M21088NHGDG
4"	X3M21114N	X3M21114NHGDG

- ◆ Ook in SW uitvoering





316L

Wst. 1.4401
Wst. 1.4404

A105/N

Verzinkt A105/N

Hexagon nipple / Zeskant (dubbele) nipple - NPT



Maatvoering	316L Artikelnummer	A105/N Artikelnummer	Verzinkt Artikelnummer
1/8"	HN3M6010N	HN3M21010N	HN3M21010NHGDG
1/4"	HN3M6013N	HN3M21013N	HN3M21013NHGDG
3/8"	HN3M6017N	HN3M21017N	HN3M21017NHGDG
1/2"	HN3M6021N	HN3M21021N	HN3M21021NHGDG
3/4"	HN3M6026N	HN3M21026N	HN3M21026NHGDG
1"	HN3M6033N	HN3M21033N	HN3M21033NHGDG
1.1/4"	HN3M6042N	HN3M21042N	HN3M21042NHGDG
1.1/2"	HN3M6048N	HN3M21048N	HN3M21048NHGDG
2"	HN3M6060N	HN3M21060N	HN3M21060NHGDG
2.1/2"	HN3M6073N	HN3M21073N	HN3M21073NHGDG
3"	HN3M6088N	HN3M21088N	HN3M21088NHGDG
4"	HN3M6114N	HN3M21114N	HN3M21114NHGDG

Reducing nipple / Verloopnippel NPT



Maatvoering	316L Artikelnummer	A105/N Artikelnummer	Verzinkt Artikelnummer
1/4" x 1/8"	HRN3M6013010N	HRN3M21013010N	HRN3M21013010NHGDG
3/8" x 1/8"	HRN3M6017010N	HRN3M21017010N	HRN3M21017010NHGDG
3/8" x 1/4"	HRN3M6017013N	HRN3M21017013N	HRN3M21017013NHGDG
1/2" x 1/8"	HRN3M6021010N	HRN3M21021010N	HRN3M21021010NHGDG
1/2" x 1/4"	HRN3M6021013N	HRN3M21021013N	HRN3M21021013NHGDG
1/2" x 3/8"	HRN3M6021017N	HRN3M21021017N	HRN3M21021017NHGDG
3/4" x 1/8"	HRN3M6026010N	HRN3M21026010N	HRN3M21026010NHGDG
3/4" x 1/4"	HRN3M6026013N	HRN3M21026013N	HRN3M21026013NHGDG
3/4" x 3/8"	HRN3M6026017N	HRN3M21026017N	HRN3M21026017NHGDG
3/4" x 1/2"	HRN3M6026021N	HRN3M21026021N	HRN3M21026021NHGDG
1" x 3/8"	HRN3M6033017N	HRN3M21033017N	HRN3M21033017NHGDG
1" x 1/2"	HRN3M6033021N	HRN3M21033021N	HRN3M21033021NHGDG
1" x 3/4"	HRN3M6033026N	HRN3M21033026N	HRN3M21033026NHGDG
1.1/4" x 1/2"	HRN3M6042021N	HRN3M21042021N	HRN3M21042021NHGDG
1.1/4" x 3/4"	HRN3M6042026N	HRN3M21042026N	HRN3M21042026NHGDG
1.1/4" x 1"	HRN3M6042033N	HRN3M21042033N	HRN3M21042033NHGDG
1.1/2" x 1/2"	HRN3M6048021N	HRN3M21048021N	HRN3M21048021NHGDG
1.1/2" x 3/4"	HRN3M6048026N	HRN3M21048026N	HRN3M21048026NHGDG
1.1/2" x 1"	HRN3M6048033N	HRN3M21048033N	HRN3M21048033NHGDG
1.1/2" x 1.1/4"	HRN3M6048042N	HRN3M21048042N	HRN3M21048042NHGDG
2" x 1/2"	HRN3M6060021N	HRN3M21060021N	HRN3M21060021NHGDG
2" x 3/4"	HRN3M6060026N	HRN3M21060026N	HRN3M21060026NHGDG
2" x 1"	HRN3M6060033N	HRN3M21060033N	HRN3M21060033NHGDG
2" x 1.1/4"	HRN3M6060042N	HRN3M21060042N	HRN3M21060042NHGDG
2" x 1.1/2"	HRN3M6060048N	HRN3M21060048N	HRN3M21060048NHGDG



3000LBS FITTINGEN

NIPPELS

Hieronder wordt alleen de wanddikte XS vermeld.
Wij kunnen op aanvraag ook andere wanddiktes volgens
ASTM/ASME leveren.

Wst. 1.4401
Wst. 1.4404

316L

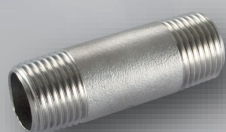
A106/B

A106/B

Verzinkt

A333/6

Pipe nipple / Pijp nippel NPT



	316L	A106/B	Verzinkt	A333/6
Maatvoering	Artikelnummer	Artikelnummer	Artikelnummer	Artikelnummer
1/4" x 50 mm XS	PNBET6013X2XS	PNBET34013X2XS	PNBET34013X2XSNHGD	PNBET33013X2XS
1/4" x 75 mm XS	PNBET6013X3XS	PNBET34013X3XS	PNBET34013X3XSNHGD	PNBET33013X3XS
1/4" x 100 mm XS	PNBET6013X4XS	PNBET34013X4XS	PNBET34013X4XSNHGD	PNBET33013X4XS
3/8" x 50 mm XS	PNBET6017X2XS	PNBET34017X2XS	PNBET34017X2XSNHGD	PNBET33017X2XS
3/8" x 75 mm XS	PNBET6017X3XS	PNBET34017X3XS	PNBET34017X3XSNHGD	PNBET33017X3XS
3/8" x 100 mm XS	PNBET6017X4XS	PNBET34017X4XS	PNBET34017X4XSNHGD	PNBET33017X4XS
1/2" x 50 mm XS	PNBET6021X2XS	PNBET34021X2XS	PNBET34021X2XSNHGD	PNBET33021X2XS
1/2" x 75 mm XS	PNBET6021X3XS	PNBET34021X3XS	PNBET34021X3XSNHGD	PNBET33021X3XS
1/2" x 100 mm XS	PNBET6021X4XS	PNBET34021X4XS	PNBET34021X4XSNHGD	PNBET33021X4XS
1/2" x 150 mm XS	PNBET6021X6XS	PNBET34021X6XS	PNBET34021X6XSNHGD	PNBET33021X6XS
1/2" x 200 mm XS	PNBET6021X8XS	PNBET34021X8XS	PNBET34021X8XSNHGD	PNBET33021X8XS
3/4" x 50 mm XS	PNBET6026X2XS	PNBET34026X2XS	PNBET34026X2XSNHGD	PNBET33026X2XS
3/4" x 75 mm XS	PNBET6026X3XS	PNBET34026X3XS	PNBET34026X3XSNHGD	PNBET33026X3XS
3/4" x 100 mm XS	PNBET6026X4XS	PNBET34026X4XS	PNBET34026X4XSNHGD	PNBET33026X4XS
3/4" x 150 mm XS	PNBET6026X6XS	PNBET34026X6XS	PNBET34026X6XSNHGD	PNBET33026X6XS
3/4" x 200 mm XS	PNBET6026X8XS	PNBET34026X8XS	PNBET34026X8XSNHGD	PNBET33026X8XS
1" x 50 mm XS	PNBET6033X2XS	PNBET34033X2XS	PNBET34033X2XSNHGD	PNBET33033X2XS
1" x 75 mm XS	PNBET6033X3XS	PNBET34033X3XS	PNBET34033X3XSNHGD	PNBET33033X3XS
1" x 100 mm XS	PNBET6033X4XS	PNBET34033X4XS	PNBET34033X4XSNHGD	PNBET33033X4XS
1" x 150 mm XS	PNBET6033X6XS	PNBET34033X6XS	PNBET34033X6XSNHGD	PNBET33033X6XS
1" x 200 mm XS	PNBET6033X8XS	PNBET34033X8XS	PNBET34033X8XSNHGD	PNBET33033X8XS
1.1/4" x 100 mm XS	PNBET6042X4XS	PNBET34042X4XS	PNBET34042X4XSNHGD	PNBET33042X4XS
1.1/2" x 50 mm XS	PNBET6048X2XS	PNBET34048X2XS	PNBET34048X2XSNHGD	PNBET33048X2XS
1.1/2" x 75 mm XS	PNBET6048X4XS	PNBET34048X4XS	PNBET34048X4XSNHGD	PNBET33048X4XS
1.1/2" x 100 mm XS	PNBET6048X4XS	PNBET34048X4XS	PNBET34048X4XSNHGD	PNBET33048X4XS
1.1/2" x 150 mm XS	PNBET6048X6XS	PNBET34048X6XS	PNBET34048X6XSNHGD	PNBET33048X6XS
1.1/2" x 200 mm XS	PNBET6048X8XS	PNBET34048X8XS	PNBET34048X8XSNHGD	PNBET33048X8XS
2" x 100 mm XS	PNBET6060X4XS	PNBET34060X4XS	PNBET34060X4XSNHGD	PNBET33060X4XS
2" x 150 mm XS	PNBET6060X6XS	PNBET34060X6XS	PNBET34060X6XSNHGD	PNBET33060X6XS

Welding nipple / Lasnippel NPT



	316L	A106/B	Verzinkt	A333/6
Maatvoering	Artikelnummer	Artikelnummer	Artikelnummer	Artikelnummer
1/4" x 50 mm XS	PNOET6013X2XS	PNOET34013X2XS	PNOET34013X2XSNHGD	PNOET33013X2XS
1/4" x 75 mm XS	PNOET6013X3XS	PNOET34013X3XS	PNOET34013X3XSNHGD	PNOET33013X3XS
1/4" x 100 mm XS	PNOET6013X4XS	PNOET34013X4XS	PNOET34013X4XSNHGD	PNOET33013X4XS
3/8" x 50 mm XS	PNOET6017X2XS	PNOET34017X2XS	PNOET34017X2XSNHGD	PNOET33017X2XS
3/8" x 75 mm XS	PNOET6017X3XS	PNOET34017X3XS	PNOET34017X3XSNHGD	PNOET33017X3XS
3/8" x 100 mm XS	PNOET6017X4XS	PNOET34017X4XS	PNOET34017X4XSNHGD	PNOET33017X4XS
1/2" x 50 mm XS	PNOET6021X2XS	PNOET34021X2XS	PNOET34021X2XSNHGD	PNOET33021X2XS
1/2" x 75 mm XS	PNOET6021X3XS	PNOET34021X3XS	PNOET34021X3XSNHGD	PNOET33021X3XS
1/2" x 100 mm XS	PNOET6021X4XS	PNOET34021X4XS	PNOET34021X4XSNHGD	PNOET33021X4XS
1/2" x 150 mm XS	PNOET6021X6XS	PNOET34021X6XS	PNOET34021X6XSNHGD	PNOET33021X6XS
1/2" x 200 mm XS	PNOET6021X8XS	PNOET34021X8XS	PNOET34021X8XSNHGD	PNOET33021X8XS
3/4" x 50 mm XS	PNOET6026X2XS	PNOET34026X2XS	PNOET34026X2XSNHGD	PNOET33026X2XS
3/4" x 75 mm XS	PNOET6026X3XS	PNOET34026X3XS	PNOET34026X3XSNHGD	PNOET33026X3XS
3/4" x 100 mm XS	PNOET6026X4XS	PNOET34026X4XS	PNOET34026X4XSNHGD	PNOET33026X4XS
3/4" x 150 mm XS	PNOET6026X6XS	PNOET34026X6XS	PNOET34026X6XSNHGD	PNOET33026X6XS
3/4" x 200 mm XS	PNOET6026X8XS	PNOET34026X8XS	PNOET34026X8XSNHGD	PNOET33026X8XS
1" x 50 mm XS	PNOET6033X2XS	PNOET34033X2XS	PNOET34033X2XSNHGD	PNOET33033X2XS
1" x 75 mm XS	PNOET6033X3XS	PNOET34033X3XS	PNOET34033X3XSNHGD	PNOET33033X3XS
1" x 100 mm XS	PNOET6033X4XS	PNOET34033X4XS	PNOET34033X4XSNHGD	PNOET33033X4XS
1" x 150 mm XS	PNOET6033X6XS	PNOET34033X6XS	PNOET34033X6XSNHGD	PNOET33033X6XS
1" x 200 mm XS	PNOET6033X8XS	PNOET34033X8XS	PNOET34033X8XSNHGD	PNOET33033X8XS
1.1/4" x 100 mm XS	PNOET6042X4XS	PNOET34042X4XS	PNOET34042X4XSNHGD	PNOET33042X4XS
1.1/2" x 50 mm XS	PNOET6048X2XS	PNOET34048X2XS	PNOET34048X2XSNHGD	PNOET33048X2XS
1.1/2" x 75 mm XS	PNOET6048X4XS	PNOET34048X4XS	PNOET34048X4XSNHGD	PNOET33048X4XS
1.1/2" x 100 mm XS	PNOET6048X4XS	PNOET34048X4XS	PNOET34048X4XSNHGD	PNOET33048X4XS
1.1/2" x 150 mm XS	PNOET6048X6XS	PNOET34048X6XS	PNOET34048X6XSNHGD	PNOET33048X6XS
1.1/2" x 200 mm XS	PNOET6048X8XS	PNOET34048X8XS	PNOET34048X8XSNHGD	PNOET33048X8XS
2" x 100 mm XS	PNOET6060X4XS	PNOET34060X4XS	PNOET34060X4XSNHGD	PNOET33060X4XS
2" x 150 mm XS	PNOET6060X6XS	PNOET34060X6XS	PNOET34060X6XSNHGD	PNOET33060X6XS





316L

Wst. 1.4401
Wst. 1.4404

A105/N

Verzinkt A105/N

Full coupling / Sok NPT



	316L	A105/N	Verzinkt
Maatvoering	Artikelnummer	Artikelnummer	Artikelnummer
1/8"	FC3M6010N	FC3M21010N	FC3M21010NHDG
1/4"	FC3M6013N	FC3M21013N	FC3M21013NHDG
3/8"	FC3M6017N	FC3M21017N	FC3M21017NHDG
1/2"	FC3M6021N	FC3M21021N	FC3M21021NHDG
3/4"	FC3M6026N	FC3M21026N	FC3M21026NHDG
1"	FC3M6033N	FC3M21033N	FC3M21033NHDG
1.1/4"	FC3M6042N	FC3M21042N	FC3M21042NHDG
1.1/2"	FC3M6048N	FC3M21048N	FC3M21048NHDG
2"	FC3M6060N	FC3M21060N	FC3M21060NHDG
2.1/2"	FC3M6076N	FC3M21076N	FC3M21076NHDG
3"	FC3M6088N	FC3M21088N	FC3M21088NHDG
4"	FC3M6114N	FC3M21114N	FC3M21114NHDG

- ◆ Ook in SW uitvoering
- ◆ Ook mogelijk in LF2

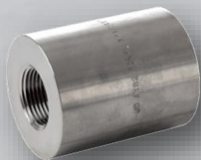
Half coupling / Halve sok NPT



	316L	A105/N	Verzinkt
Maatvoering	Artikelnummer	Artikelnummer	Artikelnummer
1/8"	HC3M6010N	HC3M21010N	HC3M21010NHDG
1/4"	HC3M6013N	HC3M21013N	HC3M21013NHDG
3/8"	HC3M6017N	HC3M21017N	HC3M21017NHDG
1/2"	HC3M6021N	HC3M21021N	HC3M21021NHDG
3/4"	HC3M6026N	HC3M21026N	HC3M21026NHDG
1"	HC3M6033N	HC3M21033N	HC3M21033NHDG
1.1/4"	HC3M6042N	HC3M21042N	HC3M21042NHDG
1.1/2"	HC3M6048N	HC3M21048N	HC3M21048NHDG
2"	HC3M6060N	HC3M21060N	HC3M21060NHDG
2.1/2"	HC3M6076N	HC3M21076N	HC3M21076NHDG
3"	HC3M6088N	HC3M21088N	HC3M21088NHDG
4"	HC3M6114N	HC3M21114N	HC3M21114NHDG

- ◆ Ook in SW uitvoering

Reducing socket / Verloopsok NPT



	316L	A105/N	Verzinkt
Maatvoering	Artikelnummer	Artikelnummer	Artikelnummer
1/4" x 1/8"	RC3M6013010N	RC3M21013010N	RC3M21013010NHDG
3/8" x 1/8"	RC3M6017010N	RC3M21017010N	RC3M21017010NHDG
3/8" x 1/4"	RC3M6017013N	RC3M21017013N	RC3M21017013NHDG
1/2" x 1/8"	RC3M6021010N	RC3M21021010N	RC3M21021010NHDG
1/2" x 1/4"	RC3M6021013N	RC3M21021013N	RC3M21021013NHDG
1/2" x 3/8"	RC3M6021017N	RC3M21021017N	RC3M21021017NHDG
3/4" x 1/8"	RC3M6026010N	RC3M21026010N	RC3M21026010NHDG
3/4" x 1/4"	RC3M6026013N	RC3M21026013N	RC3M21026013NHDG
3/4" x 3/8"	RC3M6026017N	RC3M21026017N	RC3M21026017NHDG
3/4" x 1/2"	RC3M6026021N	RC3M21026021N	RC3M21026021NHDG
1" x 3/8"	RC3M6033017N	RC3M21033017N	RC3M21033017NHDG
1" x 1/2"	RC3M6033021N	RC3M21033021N	RC3M21033021NHDG
1" x 3/4"	RC3M6033026N	RC3M21033026N	RC3M21033026NHDG
1.1/4" x 1/2"	RC3M6042021N	RC3M21042021N	RC3M21042021NHDG
1.1/4" x 3/4"	RC3M6042026N	RC3M21042026N	RC3M21042026NHDG
1.1/4" x 1"	RC3M6042033N	RC3M21042033N	RC3M21042033NHDG
1.1/2" x 1/2"	RC3M6048021N	RC3M21048021N	RC3M21048021NHDG
1.1/2" x 3/4"	RC3M6048026N	RC3M21048026N	RC3M21048026NHDG
1.1/2" x 1"	RC3M6048033N	RC3M21048033N	RC3M21048033NHDG
1.1/2" x 1.1/4"	RC3M6048042N	RC3M21048042N	RC3M21048042NHDG
2" x 1/2"	RC3M6060021N	RC3M21060021N	RC3M21060021NHDG
2" x 3/4"	RC3M6060026N	RC3M21060026N	RC3M21060026NHDG
2" x 1"	RC3M6060033N	RC3M21060033N	RC3M21060033NHDG
2" x 1.1/4"	RC3M6060042N	RC3M21060042N	RC3M21060042NHDG
2" x 1.1/2"	RC3M6060048N	RC3M21060048N	RC3M21060048NHDG



3000LBS FITTINGEN

VERLOOPRINGEN, KAPPEN & PLUGGEN

Wst. 1.4401
Wst. 1.4404

316L

A105/N

A105/N

Verzinkt

Bushing / Verloopring NPT



	316L	A105/N	Verzinkt
Maatvoering	Artikelnummer	Artikelnummer	Artikelnummer
1/4" x 1/8"	HB3M6013010N	HB3M21013010N	HB3M21013010NHGDG
3/8" x 1/8"	HB3M6017010N	HB3M21017010N	HB3M21017010NHGDG
3/8" x 1/4"	HB3M6017013N	HB3M21017013N	HB3M21017013NHGDG
1/2" x 1/8"	HB3M6021010N	HB3M21021010N	HB3M21021010NHGDG
1/2" x 1/4"	HB3M6021013N	HB3M21021013N	HB3M21021013NHGDG
1/2" x 3/8"	HB3M6021017N	HB3M21021017N	HB3M21021017NHGDG
3/4" x 1/8"	HB3M6026010N	HB3M21026010N	HB3M21026010NHGDG
3/4" x 1/4"	HB3M6026013N	HB3M21026013N	HB3M21026013NHGDG
3/4" x 3/8"	HB3M6026017N	HB3M21026017N	HB3M21026017NHGDG
3/4" x 1/2"	HB3M6026021N	HB3M21026021N	HB3M21026021NHGDG
1" x 3/8"	HB3M6033017N	HB3M21033017N	HB3M21033017NHGDG
1" x 1/2"	HB3M6033021N	HB3M21033021N	HB3M21033021NHGDG
1" x 3/4"	HB3M6033026N	HB3M21033026N	HB3M21033026NHGDG
1.1/4" x 1/2"	HB3M6042021N	HB3M21042021N	HB3M21042021NHGDG
1.1/4" x 3/4"	HB3M6042026N	HB3M21042026N	HB3M21042026NHGDG
1.1/4" x 1"	HB3M6042033N	HB3M21042033N	HB3M21042033NHGDG
1.1/2" x 1/2"	HB3M6048021N	HB3M21048021N	HB3M21048021NHGDG
1.1/2" x 3/4"	HB3M6048026N	HB3M21048026N	HB3M21048026NHGDG
1.1/2" x 1"	HB3M6048033N	HB3M21048033N	HB3M21048033NHGDG
1.1/2" x 1.1/4"	HB3M6048042N	HB3M21048042N	HB3M21048042NHGDG
2" x 1/2"	HB3M6060021N	HB3M21060021N	HB3M21060021NHGDG
2" x 3/4"	HB3M6060026N	HB3M21060026N	HB3M21060026NHGDG
2" x 1"	HB3M6060033N	HB3M21060033N	HB3M21060033NHGDG
2" x 1.1/4"	HB3M6060042N	HB3M21060042N	HB3M21060042NHGDG
2" x 1.1/2"	HB3M6060048N	HB3M21060048N	HB3M21060048NHGDG

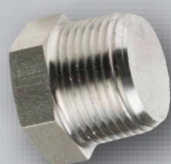
Round cap / Eindkap rond NPT



	316L	A105/N	Verzinkt
Maatvoering	Artikelnummer	Artikelnummer	Artikelnummer
1/8"	RCA3M6010N	RCA3M21010N	RCA3M21010NHGDG
1/4"	RCA3M6013N	RCA3M21013N	RCA3M21013NHGDG
3/8"	RCA3M6017N	RCA3M21017N	RCA3M21017NHGDG
1/2"	RCA3M6021N	RCA3M21021N	RCA3M21021NHGDG
3/4"	RCA3M6026N	RCA3M21026N	RCA3M21026NHGDG
1"	RCA3M6033N	RCA3M21033N	RCA3M21033NHGDG
1.1/4"	RCA3M6042N	RCA3M21042N	RCA3M21042NHGDG
1.1/2"	RCA3M6048N	RCA3M21048N	RCA3M21048NHGDG
2"	RCA3M6060N	RCA3M21060N	RCA3M21060NHGDG
2.1/2"	RCA3M6073N	RCA3M21073N	RCA3M21073NHGDG
3"	RCA3M6088N	RCA3M21088N	RCA3M21088NHGDG
4"	RCA3M6114N	RCA3M21114N	RCA3M21114NHGDG

- ◆ Ook in SW uitvoering
- ◆ Ook mogelijk met 6 kant

Hexagon plug / 6-kant plug NPT



	316L	A105/N	Verzinkt
Maatvoering	Artikelnummer	Artikelnummer	Artikelnummer
1/8"	HP3M6010N	HP3M21010N	HP3M21010NHGDG
1/4"	HP3M6013N	HP3M21013N	HP3M21013NHGDG
3/8"	HP3M6017N	HP3M21017N	HP3M21017NHGDG
1/2"	HP3M6021N	HP3M21021N	HP3M21021NHGDG
3/4"	HP3M6026N	HP3M21026N	HP3M21026NHGDG
1"	HP3M6033N	HP3M21033N	HP3M21033NHGDG
1.1/4"	HP3M6042N	HP3M21042N	HP3M21042NHGDG
1.1/2"	HP3M6048N	HP3M21048N	HP3M21048NHGDG
2"	HP3M6060N	HP3M21060N	HP3M21060NHGDG
2.1/2"	HP3M6073N	HP3M21073N	HP3M21073NHGDG
3"	HP3M6088N	HP3M21088N	HP3M21088NHGDG
4"	HP3M6114N	HP3M21114N	HP3M21114NHGDG

- ◆ Ook in LF2 verkrijgbaar



80





316L

Wst. 1.4401
Wst. 1.4404

A105/N

Verzinkt A105/N

Union / 3-delige koppelingen conisch female/female NPT



	316L	A105/N	Verzinkt
Maatvoering	Artikelnummer	Artikelnummer	Artikelnummer
1/8"	UNFF3M6010N	UNFF3M21010N	UNFF3M21010NHGDG
1/4"	UNFF3M6013N	UNFF3M21013N	UNFF3M21013NHGDG
3/8"	UNFF3M6017N	UNFF3M21017N	UNFF3M21017NHGDG
1/2"	UNFF3M6021N	UNFF3M21021N	UNFF3M21021NHGDG
3/4"	UNFF3M6026N	UNFF3M21026N	UNFF3M21026NHGDG
1"	UNFF3M6033N	UNFF3M21033N	UNFF3M21033NHGDG
1.1/4"	UNFF3M6042N	UNFF3M21042N	UNFF3M21042NHGDG
1.1/2"	UNFF3M6048N	UNFF3M21048N	UNFF3M21048NHGDG
2"	UNFF3M6060N	UNFF3M21060N	UNFF3M21060NHGDG
2.1/2"	UNFF3M6073N	UNFF3M21073N	UNFF3M21073NHGDG
3"	UNFF3M6088N	UNFF3M21088N	UNFF3M21088NHGDG
4"	UNFF3M6114N	UNFF3M21114N	UNFF3M21114NHGDG

- ◆ Ook in SW uitvoering
- ◆ Ook in LF2 verkrijgbaar

Union / 3-delige koppelingen conisch male/female NPT



	316L	A105/N	Verzinkt
Maatvoering	Artikelnummer	Artikelnummer	Artikelnummer
1/8"	UNMF3M6010N	UNMF3M21010N	UNMF3M21010NHGDG
1/4"	UNMF3M6013N	UNMF3M21013N	UNMF3M21013NHGDG
3/8"	UNMF3M6017N	UNMF3M21017N	UNMF3M21017NHGDG
1/2"	UNMF3M6021N	UNMF3M21021N	UNMF3M21021NHGDG
3/4"	UNMF3M6026N	UNMF3M21026N	UNMF3M21026NHGDG
1"	UNMF3M6033N	UNMF3M21033N	UNMF3M21033NHGDG
1.1/4"	UNMF3M6042N	UNMF3M21042N	UNMF3M21042NHGDG
1.1/2"	UNMF3M6048N	UNMF3M21048N	UNMF3M21048NHGDG
2"	UNMF3M6060N	UNMF3M21060N	UNMF3M21060NHGDG
2.1/2"	UNMF3M6073N	UNMF3M21073N	UNMF3M21073NHGDG
3"	UNMF3M6088N	UNMF3M21088N	UNMF3M21088NHGDG
4"	UNMF3M6114N	UNMF3M21114N	UNMF3M21114NHGDG



3000LBS FITTINGEN

OUTLETS / BRANCH FITTINGS

Wst. 1.4301
Wst. 1.4307 **304L**

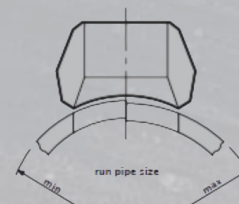
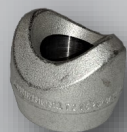
Wst. 1.4401
Wst. 1.4404 **316L**

A105/N

LF2

Olet fittingen worden gebruikt om een grotere buismaat te laten overlopen naar een kleinere buismaat. Deze fittingen zijn zeer betrouwbaar en gaan lang mee. De hoofdleiding waarop de fitting wordt gelast wordt de "run" afmeting genoemd, deze worden vaak gemaakt in bereiken variërend van 1" tot en met 36". Hierdoor zijn deze fittingen toepasbaar in diverse systemen.

Wij verkopen verschillende soorten olets. Echter is het zo dat de wens van onze klanten vaak een andere run is dan hier daadwerkelijk ligt. Wat betekent dat het materiaal eerst gemaakt moet worden bij onze leverancier. Hierdoor zit er wel vaak wat levertijd op deze fittingen.



Weldolets

NPS	RP	WT	304L	316L	A105/N	LF2
Nominal pipe size	Run pipe size (RPS min + max)	Wanddikte	Artikelnummer	Artikelnummer	Artikelnummer	Artikelnummer
1/2"	1" - 36"	10S	BFW3M4021(RP1+2)10S	BFW3M6021(RP1+2)10S	-	-
		40S / STD	BFW3M4021(RP1+2)STD	BFW3M6021(RP1+2)STD	BFW3M21021(RP1+2)STD	BFW3M24021(RP1+2)STD
		80S / XS	BFW3M4021(RP1+2)XS	BFW3M6021(RP1+2)XS	BFW3M21021(RP1+2)XS	BFW3M24021(RP1+2)XS
		Sch160	-	-	BFW3M21021(RP1+2)160	BFW3M24021(RP1+2)160
		XXS	-	-	BFW3M21021(RP1+2)XXS	BFW3M24021(RP1+2)XXS
3/4"	1" - 36"	10S	BFW3M4026(RP1+2)10S	BFW3M6026(RP1+2)10S	-	-
		40S / STD	BFW3M4026(RP1+2)STD	BFW3M6026(RP1+2)STD	BFW3M21026(RP1+2)STD	BFW3M24026(RP1+2)STD
		80S / XS	BFW3M4026(RP1+2)XS	BFW3M6026(RP1+2)XS	BFW3M21026(RP1+2)XS	BFW3M24026(RP1+2)XS
		Sch160	-	-	BFW3M21026(RP1+2)160	BFW3M24026(RP1+2)160
		XXS	-	-	BFW3M21026(RP1+2)XXS	BFW3M24026(RP1+2)XXS
1"	1.1/2" - 36"	10S	BFW3M4033(RP1+2)10S	BFW3M6033(RP1+2)10S	-	-
		40S / STD	BFW3M4033(RP1+2)STD	BFW3M6033(RP1+2)STD	BFW3M21033(RP1+2)STD	BFW3M24033(RP1+2)STD
		80S / XS	BFW3M4033(RP1+2)XS	BFW3M6033(RP1+2)XS	BFW3M21033(RP1+2)XS	BFW3M24033(RP1+2)XS
		Sch160	-	-	BFW3M21033(RP1+2)160	BFW3M24033(RP1+2)160
		XXS	-	-	BFW3M21033(RP1+2)XXS	BFW3M24033(RP1+2)XXS
1.1/4"	1.1/2" - 36"	10S	BFW3M4042(RP1+2)10S	BFW3M6042(RP1+2)10S	-	-
		40S / STD	BFW3M4042(RP1+2)STD	BFW3M6042(RP1+2)STD	BFW3M21042(RP1+2)STD	BFW3M24042(RP1+2)STD
		80S / XS	BFW3M4042(RP1+2)XS	BFW3M6042(RP1+2)XS	BFW3M21042(RP1+2)XS	BFW3M24042(RP1+2)XS
		Sch160	-	-	BFW3M21042(RP1+2)160	BFW3M24042(RP1+2)160
		XXS	-	-	BFW3M21042(RP1+2)XXS	BFW3M24042(RP1+2)XXS
1.1/2"	2" - 36"	10S	BFW3M4048(RP1+2)10S	BFW3M6048(RP1+2)10S	-	-
		40S / STD	BFW3M4048(RP1+2)STD	BFW3M6048(RP1+2)STD	BFW3M21048(RP1+2)STD	BFW3M24048(RP1+2)STD
		80S / XS	BFW3M4048(RP1+2)XS	BFW3M6048(RP1+2)XS	BFW3M21048(RP1+2)XS	BFW3M24048(RP1+2)XS
		Sch160	-	-	BFW3M21048(RP1+2)160	BFW3M24048(RP1+2)160
		XXS	-	-	BFW3M21048(RP1+2)XXS	BFW3M24048(RP1+2)XXS
2"	2.1/2" - 36"	10S	BFW3M4060(RP1+2)10S	BFW3M6060(RP1+2)10S	-	-
		40S / STD	BFW3M4060(RP1+2)STD	BFW3M6060(RP1+2)STD	BFW3M21060(RP1+2)STD	BFW3M24060(RP1+2)STD
		80S / XS	BFW3M4060(RP1+2)XS	BFW3M6060(RP1+2)XS	BFW3M21060(RP1+2)XS	BFW3M24060(RP1+2)XS
		Sch160	-	-	BFW3M21060(RP1+2)160	BFW3M24060(RP1+2)160
		XXS	-	-	BFW3M21060(RP1+2)XXS	BFW3M24060(RP1+2)XXS

De run pipe size maten zijn nu open gelaten met RP1+2.

Deze kunt u invullen aan de hand van de maten die u nodig hebt en onderstaande tabel toepassen bij de artikelen hierboven.

NPS	Code	NPS	Code
1"	033	14"	355
1.1/4"	042	16"	406
1.1/2"	048	18"	457
2"	060	20"	508
2.1/2"	073	22"	559
3"	088	24"	610
4"	114	28"	711
5"	141	30"	762
6"	168	32"	813
8"	219	34"	884
10"	273	36"	914
12"	323		

Voorbeeld:

Ik heb een Weldolet 316L 2" nodig met een run size van 2.1/2" - 4" XS.

Artikel is dan BFW3M6073114XS.



OUTLETS / BRANCH FITTINGS

Naast de weldolets bestaan er ook vele andere olets.
Wij verkopen doorgaans onderstaande olets.

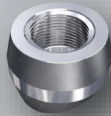
Mocht u toch op zoek zijn naar een andere olet dan kunt u altijd contact opnemen met één van onze verkopers.

Olet	Artikel
------	---------

Sockolet BFS3M



Threadolet BFT3M



Nipolet BFN3M



Elbolet BFEBW3M

