

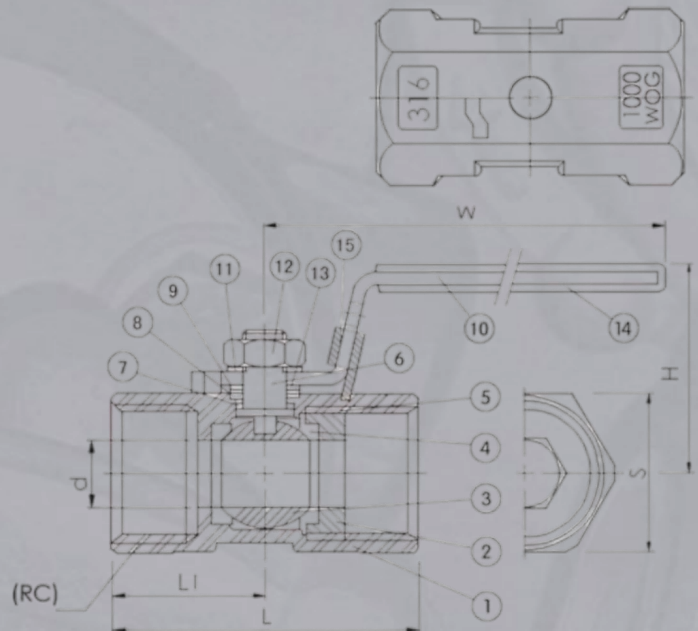


Kogelkraan 1-delig, bi/bi, reducerende doorlaat
Ball valve 1-piece, F/F, reduced bore



Maat	d	L	L1	H	W	S	Artikelnr.
1/4"	5	39	19	30	70	17	BV1RB6013G
3/8"	6.8	44	21	34	90	21	BV1RB6017G
1/2"	9.2	56.5	27.5	41	100	25	BV1RB6021G
3/4"	12.5	59	29	44	100	32	BV1RB6026G
1"	15	71	34.5	50	110	38	BV1RB6033G
1.1/4"	20	78	37	55	110	48	BV1RB6042G
1.1/2"	25	83	40	64	135	53	BV1RB6048G
2"	32	100	49	70	145	65	BV1RB6060G
2.1/2"	38	128	60	83	190	85	BV1RB6073G
3"	65	153	72	77	189	96	BV1RB6088G

Nr.	Parts	Material	Quality
1	Body	ASTM-A351-CF8M	ASTM-A216-WCB
2	Insert	ASTM-A351-CF8M	ASTM-A216-WCB
3	Ball	ASTM-A351-CF8M	ASTM-A351-CF8M
4	Ballseat (2pcs)	PTFE	PTFE
5	Jointgasket	PTFE	PTFE
6	Stem	AISI 316	AISI 316
7	Thrustwasher	PTFE	PTFE
8	Stempacking	PTFE	PTFE
9	Stemwasher	AISI 304	AISI 304
10	Handle	AISI 304	AISI 304
11	Springwasher	AISI 304	AISI 304
12	Stemnut	AISI 304	AISI 304
13	Bellevillewasher	AISI 304	AISI 304
14	Plasticcover	PLASTIC	PLASTIC
15	Lockdevice	AISI 304	AISI 304



- ◆ F-F BSP Threads ISO 7/1
- ◆ Max. working pressure 63 Bar (1000 psi)
- ◆ Working temperature -20°C / 180°C

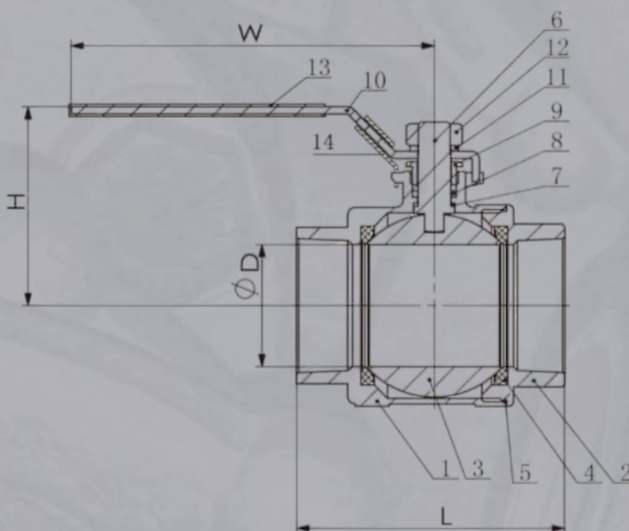


Kogelkraan 2-delig, bi/bi, volle doorlaat
Ball valve 2-piece, F/F, full bore



Maat	D	L	H	W	Artikelnr.
1/4"	11.6	49	51	95	BV2FB6013G
3/8"	12.7	49	51	95	BV2FB6017G
1/2"	15.0	57	48.5	95	BV2FB6021G
3/4"	20.0	65	54.5	108	BV2FB6026G
1"	25.0	77	58	108	BV2FB6033G
1.1/4"	32.0	90	70.5	130	BV2FB6042G
1.1/2"	38.0	98	76	130	BV2FB6048G
2"	50.0	121	83.5	150	BV2FB6060G
2.1/2"	65.0	145	125	200	BV2FB6073G
3"	80.0	166	136	200	BV2FB6088G
4"	100	198	165	270	BV2FB6114G

Nr.	Parts	Material
1	Body	ASTM-A351-CF8M
2	Cap	ASTM-A351-CF8M
3	Ball	ASTM-A351-CF8M
4	Ballseat (2pcs)	PTFE
5	Jointgasket	PTFE
6	Stem	AISI 316
7	Thrustwasher	PTFE
8	Stempacking (2pcs)	PTFE
9	Gland nut	AISI 304
10	Handle	AISI 304
11	Stem Washer	AISI 304
12	Stem Nut	AISI 304
13	Plastic cover	PLASTIC
14	Lock device	AISI 304
15	Lockdevice	AISI 304



- ◆ F-F BSP Threads ISO 7/1
- ◆ Max. working pressure 63 Bar (1000 psi)
- ◆ Working temperature -20°C / 180°C

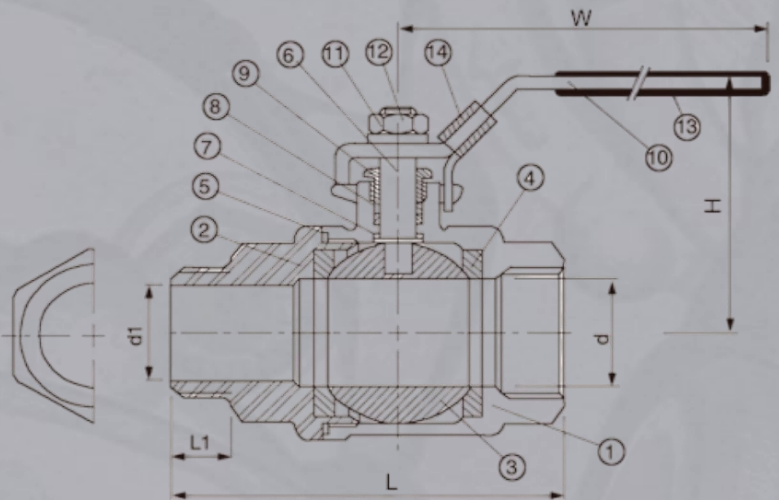


Kogelkraan 2-delig, bu/bi, volle doorlaat
Ball valve 2-piece, M/F, full bore



Maat	d	d1	L	L1	H	W	Cv factor	Torque Kg/cm	Artikelnr.
1/4"	12.8	7	63	12.6	51	95	6.6	40	BV2FB6013GMF
3/8"	12.8	8.5	63.5	13.2	51	95	7.9	40	BV2FB6017GMF
1/2"	15	12.5	74	16.7	55	95	11.2	54	BV2FB6021GMF
3/4"	20	17.5	82	18.2	59	110	21	74	BV2FB6026GMF
1"	25	23.8	98.5	21	73	135	35	104	BV2FB6033GMF
1.1/4"	32	30.8	112.4	23.5	78	135	57	135	BV2FB6042GMF
1.1/2"	38	36.6	126.4	23.5	91	147	80	180	BV2FB6048GMF
2"	50	47.5	151.7	27.8	99	165	148	250	BV2FB6060GMF

Nr.	Parts	Material T2NF	Material T2NF-C
1	Body	ASTM-A351-CF8M	ASTM-A2 16-WCB
2	Cap	ASTM-A351-CF8M	ASTM-A2 16-WCB
3	Ball	ASTM-A351-CF8M	ASTM-A351-CF8M
4	Ballseat	PTFE	PTFE
5	Jointgasket	PTFE	PTFE
6	Stem	AISI 316	AISI 316
7	Thrustwasher	PTFE	PTFE
8	Stem packing	PTFE	PTFE
9	Gland nut	AISI 304	AISI 304
10	Handle	AISI 304	AISI 304
11	Spring Washer	AISI 304	AISI 304
12	Stem Nut	AISI 304	AISI 304
13	Plastic cover	PLASTIC	PLASTIC
14	Lock device	AISI 304	AISI 304



- ◆ M-F BSP Threads ISO 7/1
- ◆ Max. working pressure 63 Bar (1000 psi)
- ◆ Working temperature -20°C / 180°C

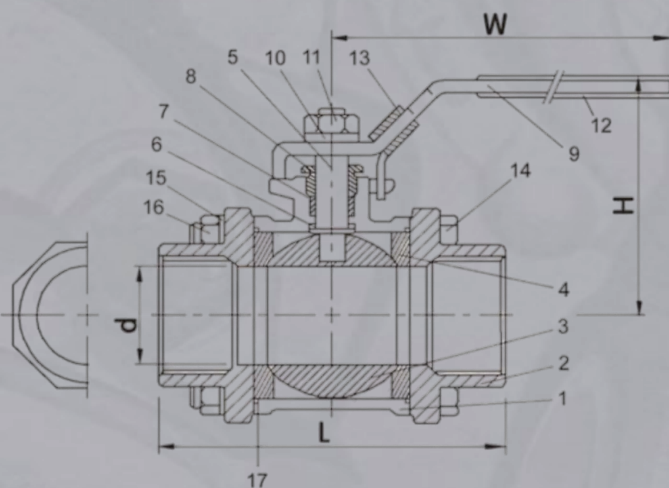


Kogelkraan 3-delig, bi/bi, volle doorlaat
 Ball valve 3-piece, F/F, full bore



Maat	d	L	H	W	Cv factor	Torque Kgf/cm	Artikelnr.
1/4"	12.8	59	51	95	6.6	40	BV3FB6013G
3/8"	12.8	59	51	95	7.9	40	BV3FB6017G
1/2"	15	64	55	95	11.2	54	BV3FB6021G
3/4"	20	75	59	110	21	74	BV3FB6026G
1"	25	85	73	135	34	104	BV3FB6033G
1.1/4"	32	97	78	135	57	135	BV3FB6042G
1.1/2"	38	110	91	147	80	180	BV3FB6048G
2"	50	132	99	165	148	250	BV3FB6060G
2.1/2"	65	167	130	215	265	500	BV3FB6073G
3"	80	187	142	215	415	770	BV3FB6088G
4"	100	230	174	310	780	1100	BV3FB6114G

Nr.	Parts	Qty.	Material T3IM	Material T3IM-C
1	Body	1	ASTM-A351-CF8M	ASTM-A2 16-WCB
2	Cap	2	ASTM-A351-CF8M	ASTM-A2 16-WCB
3	Ball	1	ASTM-A351-CF8M	ASTM-A351-CF8M
4	Ballseat	2	PTFE	PTFE
5	Stem	1	AISI 316	AISI 316
6	Thrustwasher	1	PTFE	PTFE
7	Stem packing	2	PTFE	PTFE
8	Gland nut	1	PTFE	AISI 304
9	Handle	1	AISI 304	AISI 304
10	Stem Washer	1	AISI 304	AISI 304
11	Stem nut	1	AISI 304	AISI 304
12	Plastic cover	1	PLASTIC	PLASTIC
13	Lock device	1	AISI 304	AISI 304
14	Bolt	4-6	AISI 304	AISI 304
15	Spring washer	4-6	AISI 304	AISI 304
16	Hex nut	4-6	AISI 304	AISI 304
17	Joint gasket	2	PTFE	PTFE



- ◆ F-F BSP Threads ISO 228/1 (DIN 259)
- ◆ Max. working pressure 63-40 Bar (1000-600 psi)
- ◆ Working temperature -20°C / 180°C



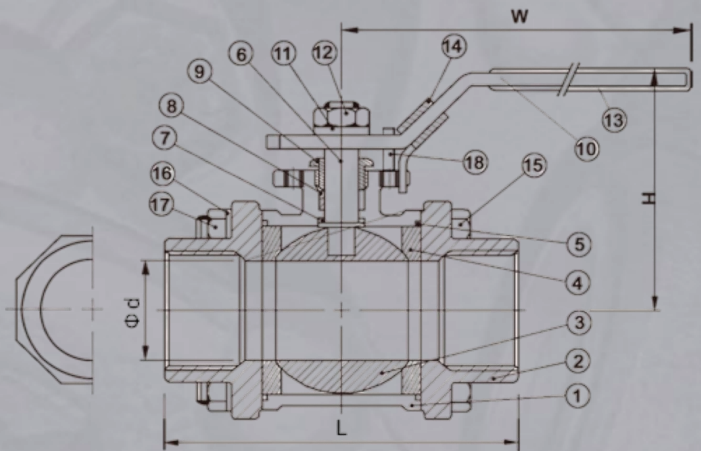
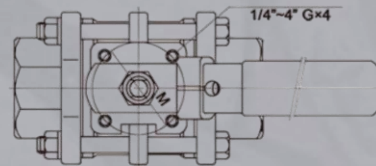
KOGELKRANEN

Kogelkraan 3-delig, bi/bi met ISO top, volle doorlaat
 Ball valve 3-piece, F/F with mounting pad, full bore



Maat	d	L	H	W	M	G	Cv factor	Torque Kg/cm	Artikelnr.
1/4"	12.8	59	51	95	36	M5	6.6	40	BV3FBI6013G
3/8"	12.8	59	51	95	36	M5	7.9	40	BV3FBI6017G
1/2"	15	64	55	95	36	M5	11.2	54	BV3FBI6021G
3/4"	20	75	63	110	36	M5	21	78	BV3FBI6026G
1"	25	85	74	135	42	M5	35	106	BV3FBI6033G
1.1/4"	32	97	80	135	50	M6	57	150	BV3FBI6042G
1.1/2"	38	110	92	175	50	M6	80	200	BV3FBI6048G
2"	50	132	107	180	70	M8	150	280	BV3FBI6060G
2.1/2"	65	167	128	250	70	M8	265	500	BV3FBI6073G
3"	80	187	138	250	70	M8	415	770	BV3FBI6088G
4"	100	230	180	300	102	M10	780	1100	BV3FBI6114G

Nr.	Parts	Qty.	Material T31M	Material T31M-C
1	Body	1	ASTM-A351-CF8M	ASTM-A2 16-WCB
2	Cap	2	ASTM-A351-CF8M	ASTM-A2 16-WCB
3	Ball	1	ASTM-A351-CF8M	ASTM-A351-CF8M
4	Ballseat	2	PTFE	PTFE
5	Stem	2	PTFE	PTFE
6	Joint gasket	1	AISI 316	AISI 316
7	Thrust washer	1	PTFE	PTFE
8	Stem packing	2	PTFE	PTFE
9	Gland nut	1	AISI 304	AISI 304
10	Handle	1	AISI 304	AISI 304
11	Stem washer	1	AISI 304	AISI 304
12	Stem nut	1	AISI 304	AISI 304
13	Plastic cover	1	PLASTIC	PLASTIC
14	Lock device	1	AISI 304	AISI 304
15	Bolt	4-6	AISI 304	AISI 304
16	Spring washer	4-6	AISI 304	AISI 304
17	Hex nut	4-6	AISI 304	AISI 304
18	Stop pin	1	AISI 304	AISI 304



- ◆ F-F BSP Threads ISO 228/1 (DIN2599)
- ◆ Direct mounting pad ISO 5211
- ◆ Max. working pressure 63-40 Bar (1000-600 psi)
- ◆ Working temperature -20°C / 180°C

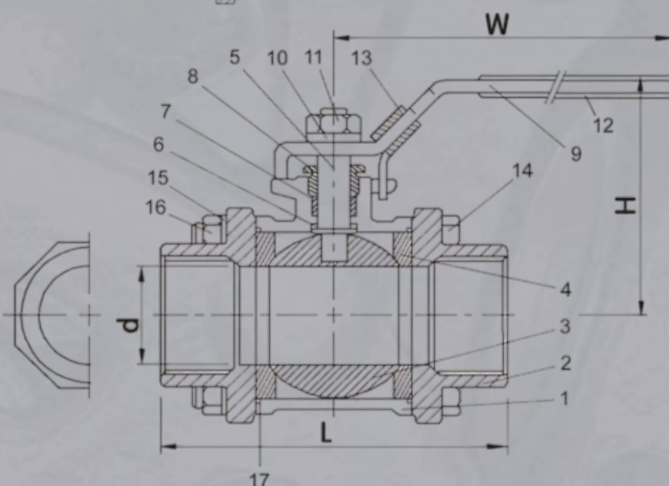
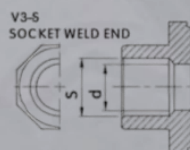
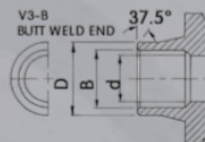


Kogelkraan 3-delig, laseinden, volle doorlaat
Ball valve 3-piece, welded ends, full bore



Maat	d	L	H	W	B	D	S	Artikelnr.
1/4"	12.8	59	51	95	12	18	14.1	BV3FB6013BW
3/8"	12.8	59	51	95	14	18	17.6	BV3FB6017BW
1/2"	15	64	55	95	17.1	22	21.7	BV3FB6021BW
3/4"	20	75	59	110	22.5	27.5	27.1	BV3FB6026BW
1"	25	86	73	135	28	33.5	33.8	BV3FB6033BW
1.1/4"	32	97	78	135	33.5	44	42.6	BV3FB6042BW
1.1/2"	38	110	91	147	43	50	48.7	BV3FB6048BW
2"	50	132	99	165	53	61.5	61.1	BV3FB6060BW
2.1/2"	65	167	130	215	65	76	76.9	BV3FB6073BW
3"	80	187	142	215	80	92	89.8	BV3FB6088BW
4"	100	230	174	310	100	115	115.4	BV3FB6114BW

Nr.	Parts	Qty.	Material T3BW	Material T3BW-C
1	Body	1	ASTM-A351-CF8M	ASTM-A2 16-WCB
2	Ball	1	ASTM-A351-CF8M	ASTM-A351-CF8M
3	Thrust washer	1	PTFE	PTFE
4	Stem packing	2	PTFE	PTFE
5	Stem	1	PTFE	AISI 316
6	Gland nut	1	AISI 316	AISI 304
7	Stem washer	1	AISI 304	AISI 304
8	Stem nut	1	AISI 304	AISI 304
9	Cap	2	ASTM-A351-CF8M	ASTM-A2 16-WCB
10	Handle	1	AISI 304	AISI 304
11	Bolt	4-6	AISI 304	AISI 304
12	Hex nut	4-6	AISI 304	AISI 304
13	Spring washer	4-6	AISI 304	AISI 304
14	Ball seat	2	PTFE	PTFE
15	Joint gasket	2	PTFE	PTFE
16	Plastic cover	1	PLASTIC	PLASTIC
17	Lock device	1	AISI 304	AISI 304



- ◆ Max. working pressure 63-40 Bar (1000-600 psi)
- ◆ Working temperature -20°C / 180°C



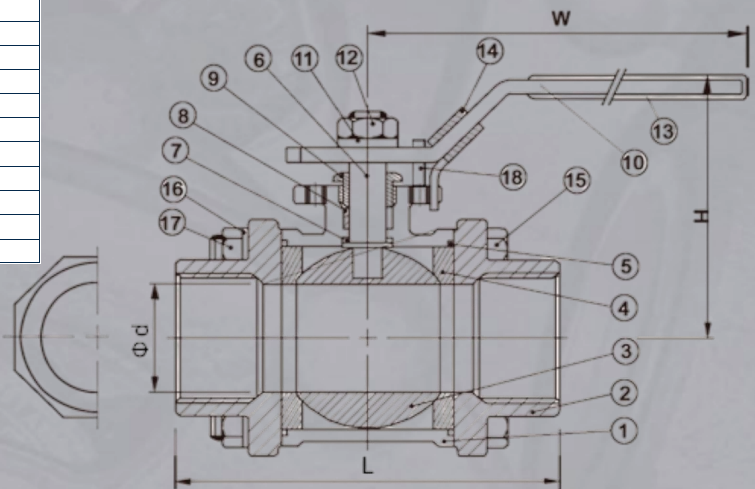
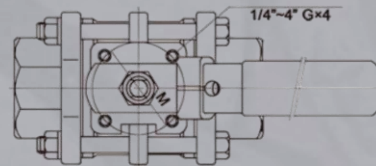
KOGELKRANEN

Kogelkraan 3-delig, laseinden met ISO top, volle doorlaat
Ball valve 3-piece, welded ends with mounting pad, full bore



Maat	d	L	H	W	M	G	Artikel nr.
1/4"	12.8	59	51	95	36	M5	BV3FBI6013BW
3/8"	12.8	59	51	95	36	M5	BV3FBI6017BW
1/2"	15	64	55	95	36	M5	BV3FBI6021BW
3/4"	20	75	63	110	36	M5	BV3FBI6026BW
1"	25	85	74	135	42	M5	BV3FBI6033BW
1.1/4"	32	97	80	135	50	M6	BV3FBI6042BW
1.1/2"	38	110	92	175	50	M6	BV3FBI6048BW
2"	50	132	107	180	70	M8	BV3FBI6060BW
2.1/2"	65	167	128	250	70	M8	BV3FBI6073BW
3"	80	187	138	250	70	M8	BV3FBI6088BW
4"	100	230	180	300	102	M10	BV3FBI6114BW

Nr.	Parts	Qty.	Material T2IM	Material T2IM-C
1	Body	1	ASTM-A351-CF8M	ASTM-A2 16-WCB
2	Cap	2	ASTM-A351-CF8M	ASTM-A2 16-WCB
3	Ball	1	ASTM-A351-CF8M	ASTM-A351-CF8M
4	Ballseat	2	PTFE	PTFE
5	Stem	2	PTFE	PTFE
6	Joint gasket	1	AISI 316	AISI 316
7	Thrust washer	1	PTFE	PTFE
8	Stem packing	2	PTFE	PTFE
9	Gland nut	1	AISI 304	AISI 304
10	Handle	1	AISI 304	AISI 304
11	Stem washer	1	AISI 304	AISI 304
12	Stem nut	1	AISI 304	AISI 304
13	Plastic cover	1	PLASTIC	PLASTIC
14	Lock device	1	AISI 304	AISI 304
15	Bolt	4-6	AISI 304	AISI 304
16	Spring washer	4-6	AISI 304	AISI 304
17	Hex nut	4-6	AISI 304	AISI 304
18	Stop pin	1	AISI 304	AISI 304



- ◆ Direct mounting pad ISO 5211
- ◆ Max. working pressure 63-40 Bar (1000-600 psi)
- ◆ Working temperature -20°C / 180°C



AFSLUITERS

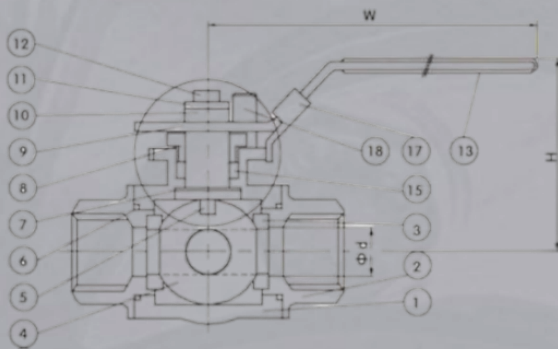
KOGELKRANEN



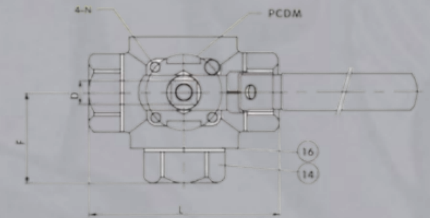
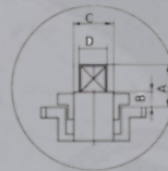
Kogelkraan 3-weg, L-boring bi/bi/bi, reducerende doorlaat

Port ball valve 3 way, L-bore F/F/F, reducing bore

Maat	d	L	B	D	C	A	F	W	H	M	N	Cv factor	Torque Kgf-cm	Artikelnr.
1/4"	12.7	64	6	9	12.7	10.2	32	132	60	42	M5*0.8	68	7.8	BVL3RB6013G
3/8"	12.7	64	6	9	12.7	10.2	32	132	60	42	M5*0.8	68	7.8	BVL3RB6017G
1/2"	12.7	75	6	9	12.7	10.2	37.5	132	60	42	M5*0.8	68	9.5	BVL3RB6021G
3/4"	16	84	6	10.7	15	16	42	155	73	50	M6*1	105	14	BVL3RB6026G
1"	20	101	7.5	10.7	15	18	50.5	155	80	50	M6*1	196	26	BVL3RB6033G
1.1/4"	25	119	7.5	10.7	15	18	54.5	155	85	50	M6*1	266	43	BVL3RB6042G
1.1/2"	32	130	8.5	14	20	19	65	210	103	70	M8*1.25	363	70	BVL3RB6048G
2"	38	151	8.5	14	20	19	75.5	210	110	70	M8*1.25	500	102	BVL3RB6060G



PORT	1	2	3	4
TYPE	L	L	L	L
T	1	1	1	1



Nr.	Parts	Qty.	Material
1	Body	1	ASTM-A351-CF8M
2	End cap	2	ASTM-A351-CF8M
3	Ballseat	4	PTFE
4	Ball	1	ASTM-A351-CF8M
5	Stem	1	AISI 316
6	End seals	2	PTFE
7	Thrust washer	1	PTFE
8	Gland nut	1	AISI 304
9	Handle	1	AISI 304
10	Handle washer	1	AISI 304
11	Wash	1	AISI 304
12	Handle nut	1	AISI 304
13	Plastic cover	1	PLASTIC
14	End cap	1	ASTM-A351-CF8M
15	Stem packing	2	PTFE
16	End seals	1	PTFE
17	Lock	1	AISI 304
18	Stop pin	1	AISI 304

- ◆ F-F BSP Threads ISO 228 (DIN 259)
- ◆ L-Type bore ball
- ◆ Direct mounting pad ISO 5211
- ◆ Max. working pressure 63 Bar (1000 psi)
- ◆ Working temperature -20°C / 180°C

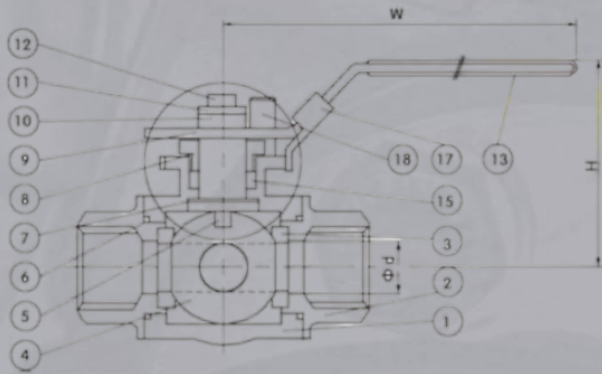


KOGELKRANEN

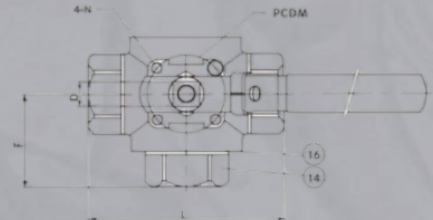
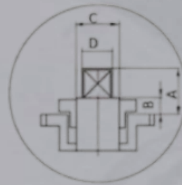


Kogelkraan 3-weg, T-boring bi/bi/bi, reducerende doorlaat
 Port ball valve 3 way, T-bore F/F/F, reducing bore

Maat	d	L	B	D	C	A	F	W	H	M	N	Cv factor	Torque Kgf-cm	Artikelnr.
1/4"	12.7	64	6	9	12.7	10.2	32	132	60	42	M5*0.8	68	7.8	BVT3RB6013G
3/8"	12.7	64	6	9	12.7	10.2	32	132	60	42	M5*0.8	68	7.8	BVT3RB6017G
1/2"	12.7	75	6	9	12.7	10.2	37.5	132	60	42	M5*0.8	68	9.5	BVT3RB6021G
3/4"	16	84	6	10.7	15	16	42	155	73	50	M6*1	105	14	BVT3RB6026G
1"	20	101	7.5	10.7	15	18	50.5	155	80	50	M6*1	196	26	BVT3RB6033G
1.1/4"	25	119	7.5	10.7	15	18	54.5	155	85	50	M6*1	266	43	BVT3RB6042G
1.1/2"	32	130	8.5	14	20	19	65	210	103	70	M8*1.25	363	70	BVT3RB6048G
2"	38	151	8.5	14	20	19	75.5	210	110	70	M8*1.25	500	102	BVT3RB6060G



PORT	1	2	3	4
TYPE	1	2	3	4
L	1	2	3	4
T	1	2	3	4



Nr.	Parts	Qty.	Material
1	Body	1	ASTM-A351-CF8M
2	End cap	2	ASTM-A351-CF8M
3	Ballseat	4	PTFE
4	Ball	1	ASTM-A351-CF8M
5	Stem	1	AISI 316
6	End seals	2	PTFE
7	Thrust washer	1	PTFE
8	Gland nut	1	AISI 304
9	Handle	1	AISI 304
10	Handle washer	1	AISI 304
11	Wash	1	AISI 304
12	Handle nut	1	AISI 304
13	Plastic cover	1	PLASTIC
14	End cap	1	ASTM-A351-CF8M
15	Stem packing	2	PTFE
16	End seals	1	PTFE
17	Lock	1	AISI 304
18	Stop pin	1	AISI 304

- ◆ F-F BSP Threads ISO 228 (DIN 259)
- ◆ T-Type bore ball
- ◆ Direct mounting pad ISO 5211
- ◆ Max. working pressure 63 Bar (1000 psi)
- ◆ Working temperature -20°C / 180°C



AFSLUITERS

KOGELKRANEN



Kogelkraan 2-delig RVS, geflensd (DIN/EN), volle doorlaat

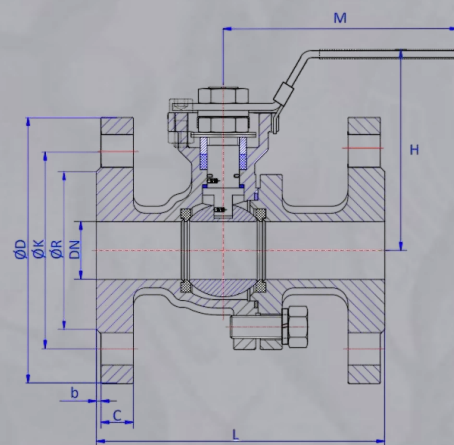
Ball valve 2 piece S.S., flange ends (DIN/EN), full bore

DN	PN	L	H	ØD	ØK	ØR	M	b	c	Bolts	Artikelnr.
15	40	115	75	95	65	45	125	2	14	4xM12	BV2FE6DN015PN40
20	40	120	80	105	75	58	125	2	16	4xM12	BV2FE6DN020PN40
25	40	125	90	115	85	68	155	2	16	4xM12	BV2FE6DN025PN40
32	40	130	100	140	100	78	155	2	16	4xM16	BV2FE6DN032PN40
40	40	140	120	150	110	88	185	3	16	4xM16	BV2FE6DN040PN40
50	16	150	130	165	125	102	185	3	18	4xM16	BV2FE6DN050PN16
65	16	170	150	185	145	122	260	3	18	4xM16	BV2FE6DN065PN16
80	16	180	160	200	160	138	260	3	20	8xM16	BV2FE6DN080PN16
100	16	190	185	220	180	158	300	3	20	8xM16	BV2FE6DN100PN16
125	16	325	242	250	210	188	500	3	22	8xM16	BV2FE6DN125PN16
150	16	350	270	285	240	212	600	3	22	8xM20	BV2FE6DN150PN16
200	16	400	300	340	195	268	800	3	24	12xM20	BV2FE6DN200PN16

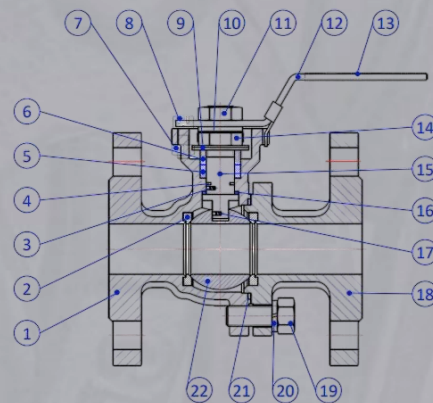
Kogelkraan 2-delig RVS, geflensd (ANSI), volle doorlaat

Ball valve 2 piece S.S., flange ends (ANSI), full bore

DN	LBS	L	H	ØD	ØK	ØR	M	b	c	Bolts	Artikelnr.
1/2"	150	108	75	90	60.3	34.9	125	2	9	4-5/8"	BV2FE6150-0.1/2
3/4"	150	117	80	100	69.9	42.9	125	2	9.3	4-5/8"	BV2FE6150-0.3/4
1"	150	127	90	110	79.4	50.8	155	2	9.8	4-5/8"	BV2FE6150-1
1.1/4"	150	140	100	115	88.9	63.5	155	2	11.5	4-5/8"	BV2FE6150-1.1/4
1.1/2"	150	165	120	125	98.4	73	190	2	13	4-5/8"	BV2FE6150-1.1/2
2"	150	178	130	150	120.7	92.1	190	2	14.5	4-3/4"	BV2FE6150-2
2.1/2"	150	190	150	178	139.7	104.8	260	2	16	4-3/4"	BV2FE6150-2.1/2
3"	150	203	160	190	152.4	127	260	2	17.8	4-3/4"	BV2FE6150-3
4"	150	229	185	228	190.5	157.20	300	2	22.3	4-3/4"	BV2FE6150-4
6"	150	394	268	280	241.3	213	555	2	24	8-7/8"	BV2FE6150-6
8"	150	457	295	345	298.5	268	750	2	28	8-7/8"	BV2FE6150-8



Nr.	Parts	Material
1	Body	ASTM-A351-CF8M (AISI 316)
2	Ball seat	RPTFE (PTFE + 15% Graphite)
3	Antistatic device	ASTM-A276 (AISI 304)
4	O-Ring	FKM
5	Stem seal	RPTFE (PTFE + 15% Graphite)
6	Packing gland	ASTM-A276 (AISI 304)
7	Nut	ASTM-A276 (AISI 304)
8	Screw	ASTM-A276 (AISI 304)
9	Disc spring	ASTM-A276 (AISI 304)
10	Thrust washer	ASTM-A276 (AISI 304)
11	Stem nut	ASTM-A276 (AISI 304)
12	Handle	ASTM-A276 AISI 201
13	Handle sleeve	Plastic
14	Nut	ASTM-A276 (AISI 304)
15	Stem	ASTM-A276 (AISI 316)
16	Stem gasket	RPTFE (PTFE + 15% Graphite)
17	Antistatic device	ASTM-A276 (AISI 304)
18	Bonnet	ASTM-A351-CF8M (AISI 316)
19	Screw	ASTM-A193 (AISI 304)
20	Washer	AISI 304
21	Gasket	RPTFE (PTFE + 15% Graphite)
22	Ball	ASTM-A276 (AISI 316)



- ◆ Flanges according EN1092-2 or ANSI class 150
- ◆ Max. pressure DIN/EN 16 Bar (DN15 - DN40, 40 Bar)
- ◆ Max. pressure ANSI 150 psi
- ◆ Working temperature -20°C / 180°C



KOGELKRANEN



Kogelkraan 2-delig staal, geflensd (DIN/EN), volle doorlaat

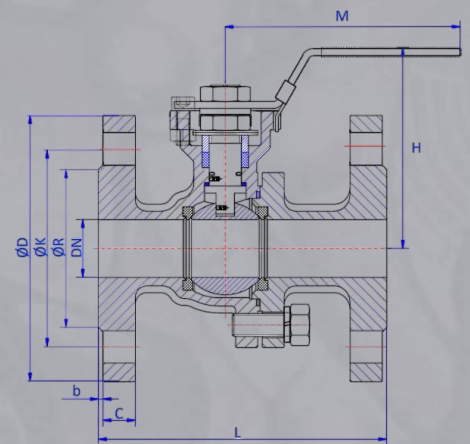
Ball valve 2 piece CS, flange ends (DIN/EN), full bore

DN	PN	L	H	øD	øK	øR	M	b	c	Bolts	Artikelnr.
15	40	115	75	95	65	45	125	2	14	4xM12	BV2FECBDN015PN40
20	40	120	80	105	75	58	125	2	16	4xM12	BV2FECBDN020PN40
25	40	125	90	115	85	68	155	2	16	4xM12	BV2FECBDN025PN40
32	40	130	100	140	100	78	155	2	16	4xM16	BV2FECBDN032PN40
40	40	140	120	150	110	88	185	3	16	4xM16	BV2FECBDN040PN40
50	16	150	130	165	125	102	185	3	18	4xM16	BV2FECBDN050PN16
65	16	170	150	185	145	122	260	3	18	4xM16	BV2FECBDN065PN16
80	16	180	160	200	160	138	260	3	20	8xM16	BV2FECBDN080PN16
100	16	190	185	220	180	158	300	3	20	8xM16	BV2FECBDN100PN16
125	16	325	242	250	210	188	500	3	22	8xM16	BV2FECBDN125PN16
150	16	350	270	285	240	212	600	3	22	8xM20	BV2FECBDN150PN16
200	16	400	376	340	295	268	900	3	24	12xM20	BV2FECBDN200PN16

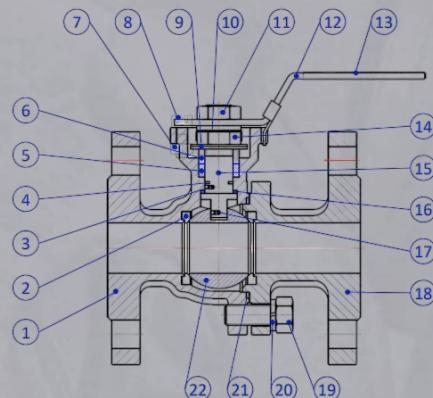
Kogelkraan 2-delig staal, geflensd (ANSI), volle doorlaat

Ball valve 2 piece CS, flange ends (ANSI), full bore

DN	LBS	L	H	øD	øK	øR	M	b	c	Bolts	Artikelnr.
1"	150	127	90	110	79.4	50.8	155	2	9.8	4-5/8"	BV2FECB150-1
1.1/4"	150	140	100	115	88.9	63.5	155	2	11.5	4-5/8"	BV2FECB150-1.1/4
1.1/2"	150	165	120	125	98.4	73	190	2	13	4-5/8"	BV2FECB150-1.1/2
2"	150	178	130	150	120.7	92.1	190	2	14.5	4-3/4"	BV2FECB150-2
2.1/2"	150	190	150	178	139.7	104.8	260	2	16	4-3/4"	BV2FECB150-2.1/2
3"	150	203	160	190	152.4	127	260	2	17.8	4-3/4"	BV2FECB150-3
4"	150	229	185	228	190.5	157.20	300	2	22.3	4-3/4"	BV2FECB150-4



Nr.	Parts	Material
1	Body	ASTM A216 WCB (Carbon Steel)
2	Ball seat	RPTFE (PTFE + 15% Graphite)
3	Antistatic device	ASTM-A276 (AISI 304)
4	O-Ring	FKM
5	Stem seal	RPTFE (PTFE + 15% Graphite)
6	Packing gland	ASTM-A276 (AISI 304)
7	Nut	ASTM-A276 (AISI 304)
8	Screw	ASTM-A276 (AISI 304)
9	Disc spring	ASTM-A276 (AISI 304)
10	Thrust washer	ASTM-A276 (AISI 304)
11	Stem nut	ASTM-A276 (AISI 304)
12	Handle	ASTM-A276 (AISI 304)
13	Handle sleeve	Plastic
14	Nut	ASTM-A276 (AISI 304)
15	Stem	ASTM-A276 (AISI 316)
16	Stem gasket	RPTFE (PTFE + 15% Graphite)
17	Antistatic device	ASTM-A276 (AISI 304)
18	Bonnet	ASTM-A216 WCB (Carbon Steel)
19	Screw	ASTM-A193 (AISI 304)
20	Washer	AISI 304
21	Gasket	RPTFE (PTFE + 15% Graphite)
22	Ball	ASTM-A276 (AISI 304)



- ◆ Flanges according EN1092-2 or ANSI class 150
- ◆ Max. pressure DIN/EN 16 Bar (DN15 - DN40, 40 Bar)
- ◆ Max. pressure ANSI 150 psi
- ◆ Working temperature -30°C / 180°C