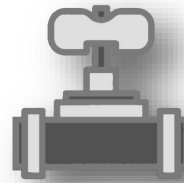


## 9. Afsluiters



Kogelkranen  
Schuifafsluiters  
Klepafsluiters  
Terugslagkleppen

Vlinderkleppen  
Geautomatiseerde afsluiters  
Vuilvangens / Y-strainers

In RVS en staal.  
Specificaties worden weergegeven bij ieder product.

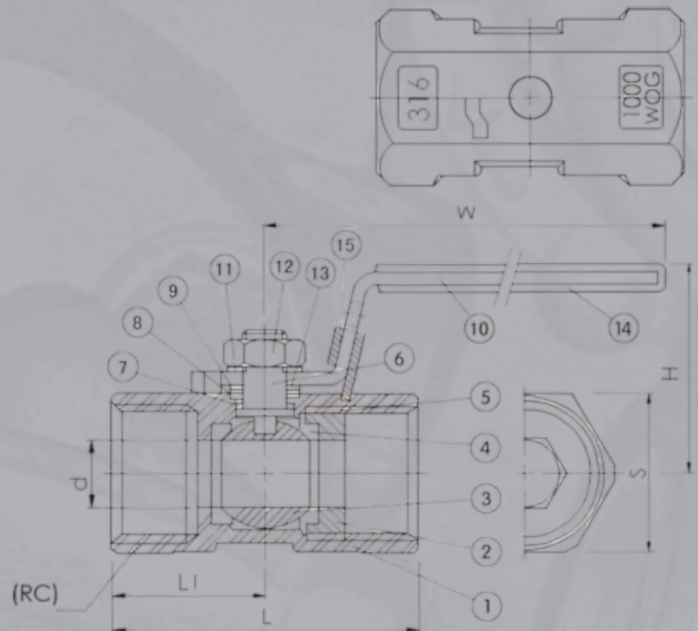


Kogelkraan 1-delig, bi/bi, reducerende doorlaat  
*Ball valve 1-piece, F/F, reduced bore*



Maat	d	L	L1	H	W	S	Artikelnr.
1/4"	5	39	19	30	70	17	BV1RB6013G
3/8"	6.8	44	21	34	90	21	BV1RB6017G
1/2"	9.2	56.5	27.5	41	100	25	BV1RB6021G
3/4"	12.5	59	29	44	100	32	BV1RB6026G
1"	15	71	34.5	50	110	38	BV1RB6033G
1.1/4"	20	78	37	55	110	48	BV1RB6042G
1.1/2"	25	83	40	64	135	53	BV1RB6048G
2"	32	100	49	70	145	65	BV1RB6060G
2.1/2"	38	128	60	83	190	85	BV1RB6073G
3"	65	153	72	77	189	96	BV1RB6088G

Nr.	Parts	Material	Quality
1	Body	ASTM-A351-CF8M	ASTM-A216-WCB
2	Insert	ASTM-A351-CF8M	ASTM-A216-WCB
3	Ball	ASTM-A351-CF8M	ASTM-A351-CF8M
4	Ballseat (2pcs)	PTFE	PTFE
5	Jointgasket	PTFE	PTFE
6	Stem	AISI 316	AISI 316
7	Thrustwasher	PTFE	PTFE
8	Stempacking	PTFE	PTFE
9	Stemwasher	AISI 304	AISI 304
10	Handle	AISI 304	AISI 304
11	Springwasher	AISI 304	AISI 304
12	Stemnut	AISI 304	AISI 304
13	Bellevilwasher	AISI 304	AISI 304
14	Plasticcover	PLASTIC	PLASTIC
15	Lockdevice	AISI 304	AISI 304



- ◆ F-F BSP Threads ISO 7/1
- ◆ Max. working pressure 63 Bar (1000 psi)
- ◆ Working temperature -20°C / 180°C

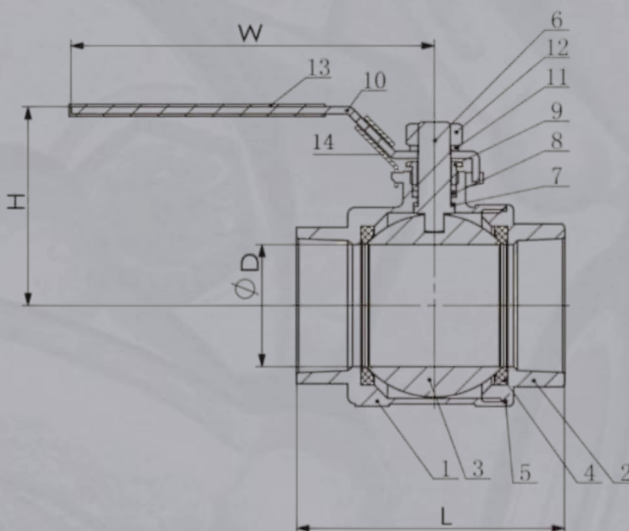


Kogelkraan 2-delig, bi/bi, volle doorlaat  
*Ball valve 2-piece, F/F, full bore*



Maat	D	L	H	W	Artikelnr.
1/4"	11.6	49	51	95	BV2FB6013G
3/8"	12.7	49	51	95	BV2FB6017G
1/2"	15.0	57	48.5	95	BV2FB6021G
3/4"	20.0	65	54.5	108	BV2FB6026G
1"	25.0	77	58	108	BV2FB6033G
1.1/4"	32.0	90	70.5	130	BV2FB6042G
1.1/2"	38.0	98	76	130	BV2FB6048G
2"	50.0	121	83.5	150	BV2FB6060G
2.1/2"	65.0	145	125	200	BV2FB6073G
3"	80.0	166	136	200	BV2FB6088G
4"	100	198	165	270	BV2FB6114G

Nr.	Parts	Material
1	Body	ASTM-A351-CF8M
2	Cap	ASTM-A351-CF8M
3	Ball	ASTM-A351-CF8M
4	Ballseat (2pcs)	PTFE
5	Jointgasket	PTFE
6	Stem	AISI 316
7	Thrustwasher	PTFE
8	Stempacking (2pcs)	PTFE
9	Gland nut	AISI 304
10	Handle	AISI 304
11	Stem Washer	AISI 304
12	Stem Nut	AISI 304
13	Plastic cover	PLASTIC
14	Lock device	AISI 304
15	Lockdevice	AISI 304



- ◆ F-F BSP Threads ISO 7/1
- ◆ Max. working pressure 63 Bar (1000 psi)
- ◆ Working temperature -20°C / 180°C

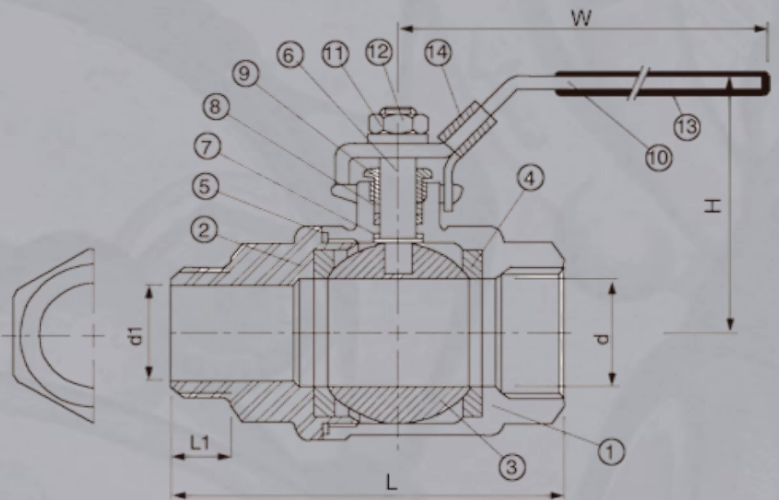


Kogelkraan 2-delig, bu/bi, volle doorlaat  
Ball valve 2-piece, M/F, full bore



Maat	d	d1	L	L1	H	W	Cv factor	Torque Kg/cm	Artikelnr.
1/4"	12.8	7	63	12.6	51	95	6.6	40	BV2FB6013GMF
3/8"	12.8	8.5	63.5	13.2	51	95	7.9	40	BV2FB6017GMF
1/2"	15	12.5	74	16.7	55	95	11.2	54	BV2FB6021GMF
3/4"	20	17.5	82	18.2	59	110	21	74	BV2FB6026GMF
1"	25	23.8	98.5	21	73	135	35	104	BV2FB6033GMF
1.1/4"	32	30.8	112.4	23.5	78	135	57	135	BV2FB6042GMF
1.1/2"	38	36.6	126.4	23.5	91	147	80	180	BV2FB6048GMF
2"	50	47.5	151.7	27.8	99	165	148	250	BV2FB6060GMF

Nr.	Parts	Material T2NF	Material T2NF-C
1	Body	ASTM-A351-CF8M	ASTM-A2 16-WCB
2	Cap	ASTM-A351-CF8M	ASTM-A2 16-WCB
3	Ball	ASTM-A351-CF8M	ASTM-A351-CF8M
4	Ballseat	PTFE	PTFE
5	Jointgasket	PTFE	PTFE
6	Stem	AISI 316	AISI 316
7	Thrustwasher	PTFE	PTFE
8	Stem packing	PTFE	PTFE
9	Gland nut	AISI 304	AISI 304
10	Handle	AISI 304	AISI 304
11	Spring Washer	AISI 304	AISI 304
12	Stem Nut	AISI 304	AISI 304
13	Plastic cover	PLASTIC	PLASTIC
14	Lock device	AISI 304	AISI 304



- ◆ M-F BSP Threads ISO 7/1
- ◆ Max. working pressure 63 Bar (1000 psi)
- ◆ Working temperature -20°C / 180°C

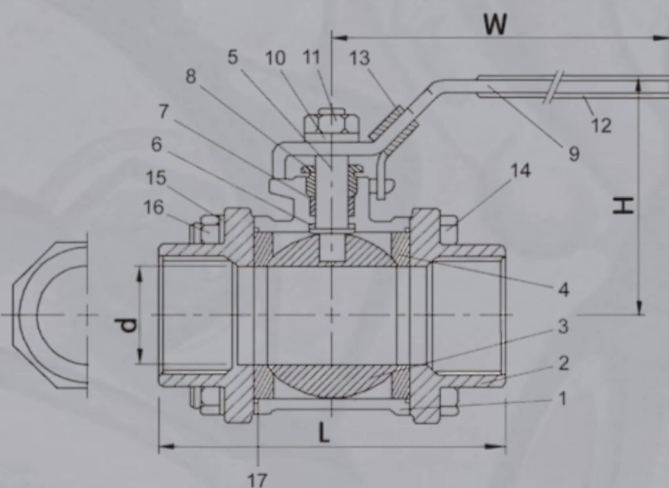


Kogelkraan 3-delig, bi/bi, volle doorlaat  
 Ball valve 3-piece, F/F, full bore



Maat	d	L	H	W	Cv factor	Torque Kgf/cm	Artikelnr.
1/4"	12.8	59	51	95	6.6	40	BV3FB6013G
3/8"	12.8	59	51	95	7.9	40	BV3FB6017G
1/2"	15	64	55	95	11.2	54	BV3FB6021G
3/4"	20	75	59	110	21	74	BV3FB6026G
1"	25	85	73	135	34	104	BV3FB6033G
1.1/4"	32	97	78	135	57	135	BV3FB6042G
1.1/2"	38	110	91	147	80	180	BV3FB6048G
2"	50	132	99	165	148	250	BV3FB6060G
2.1/2"	65	167	130	215	265	500	BV3FB6073G
3"	80	187	142	215	415	770	BV3FB6088G
4"	100	230	174	310	780	1100	BV3FB6114G

Nr.	Parts	Qty.	Material T3IM	Material T3IM-C
1	Body	1	ASTM-A351-CF8M	ASTM-A2 16-WCB
2	Cap	2	ASTM-A351-CF8M	ASTM-A2 16-WCB
3	Ball	1	ASTM-A351-CF8M	ASTM-A351-CF8M
4	Ballseat	2	PTFE	PTFE
5	Stem	1	AISI 316	AISI 316
6	Thrustwasher	1	PTFE	PTFE
7	Stem packing	2	PTFE	PTFE
8	Gland nut	1	PTFE	AISI 304
9	Handle	1	AISI 304	AISI 304
10	Stem Washer	1	AISI 304	AISI 304
11	Stem nut	1	AISI 304	AISI 304
12	Plastic cover	1	PLASTIC	PLASTIC
13	Lock device	1	AISI 304	AISI 304
14	Bolt	4-6	AISI 304	AISI 304
15	Spring washer	4-6	AISI 304	AISI 304
16	Hex nut	4-6	AISI 304	AISI 304
17	Joint gasket	2	PTFE	PTFE



- ◆ F-F BSP Threads ISO 228/1 (DIN 259)
- ◆ Max. working pressure 63-40 Bar (1000-600 psi)
- ◆ Working temperature -20°C / 180°C



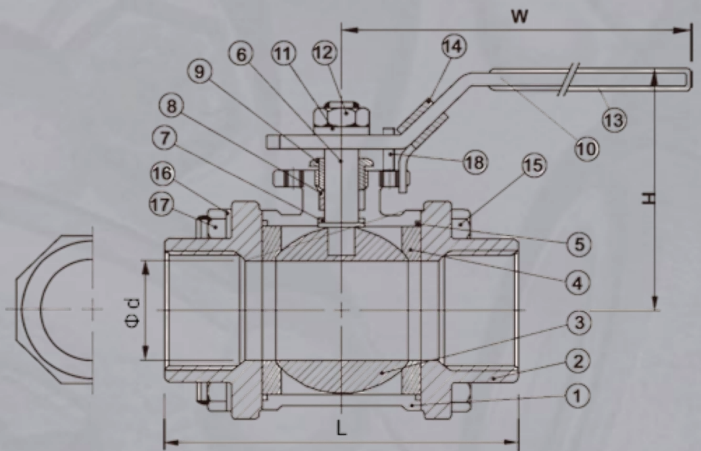
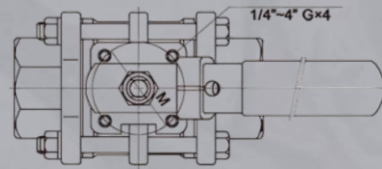
KOGELKRANEN

Kogelkraan 3-delig, bi/bi met ISO top, volle doorlaat  
 Ball valve 3-piece, F/F with mounting pad, full bore



Maat	d	L	H	W	M	G	Cv factor	Torque Kg/cm	Artikelnr.
1/4"	12.8	59	51	95	36	M5	6.6	40	BV3FBI6013G
3/8"	12.8	59	51	95	36	M5	7.9	40	BV3FBI6017G
1/2"	15	64	55	95	36	M5	11.2	54	BV3FBI6021G
3/4"	20	75	63	110	36	M5	21	78	BV3FBI6026G
1"	25	85	74	135	42	M5	35	106	BV3FBI6033G
1.1/4"	32	97	80	135	50	M6	57	150	BV3FBI6042G
1.1/2"	38	110	92	175	50	M6	80	200	BV3FBI6048G
2"	50	132	107	180	70	M8	150	280	BV3FBI6060G
2.1/2"	65	167	128	250	70	M8	265	500	BV3FBI6073G
3"	80	187	138	250	70	M8	415	770	BV3FBI6088G
4"	100	230	180	300	102	M10	780	1100	BV3FBI6114G

Nr.	Parts	Qty.	Material T31M	Material T31M-C
1	Body	1	ASTM-A351-CF8M	ASTM-A2 16-WCB
2	Cap	2	ASTM-A351-CF8M	ASTM-A2 16-WCB
3	Ball	1	ASTM-A351-CF8M	ASTM-A351-CF8M
4	Ballseat	2	PTFE	PTFE
5	Stem	2	PTFE	PTFE
6	Joint gasket	1	AISI 316	AISI 316
7	Thrust washer	1	PTFE	PTFE
8	Stem packing	2	PTFE	PTFE
9	Gland nut	1	AISI 304	AISI 304
10	Handle	1	AISI 304	AISI 304
11	Stem washer	1	AISI 304	AISI 304
12	Stem nut	1	AISI 304	AISI 304
13	Plastic cover	1	PLASTIC	PLASTIC
14	Lock device	1	AISI 304	AISI 304
15	Bolt	4-6	AISI 304	AISI 304
16	Spring washer	4-6	AISI 304	AISI 304
17	Hex nut	4-6	AISI 304	AISI 304
18	Stop pin	1	AISI 304	AISI 304



- ◆ F-F BSP Threads ISO 228/1 (DIN2599)
- ◆ Direct mounting pad ISO 5211
- ◆ Max. working pressure 63-40 Bar (1000-600 psi)
- ◆ Working temperature -20°C / 180°C

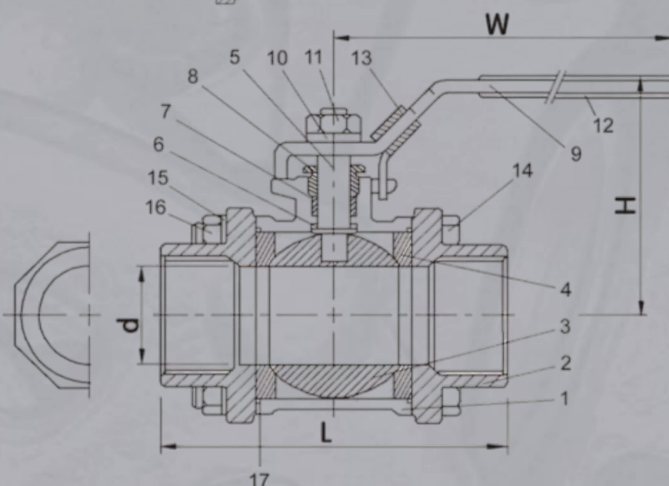
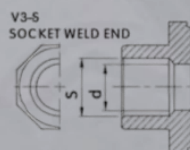
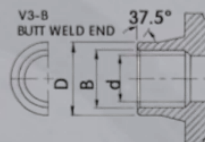


Kogelkraan 3-delig, laseinden, volle doorlaat  
*Ball valve 3-piece, welded ends, full bore*



Maat	d	L	H	W	B	D	S	Artikelnr.
1/4"	12.8	59	51	95	12	18	14.1	BV3FB6013BW
3/8"	12.8	59	51	95	14	18	17.6	BV3FB6017BW
1/2"	15	64	55	95	17.1	22	21.7	BV3FB6021BW
3/4"	20	75	59	110	22.5	27.5	27.1	BV3FB6026BW
1"	25	86	73	135	28	33.5	33.8	BV3FB6033BW
1.1/4"	32	97	78	135	33.5	44	42.6	BV3FB6042BW
1.1/2"	38	110	91	147	43	50	48.7	BV3FB6048BW
2"	50	132	99	165	53	61.5	61.1	BV3FB6060BW
2.1/2"	65	167	130	215	65	76	76.9	BV3FB6073BW
3"	80	187	142	215	80	92	89.8	BV3FB6088BW
4"	100	230	174	310	100	115	115.4	BV3FB6114BW

Nr.	Parts	Qty.	Material T3BW	Material T3BW-C
1	Body	1	ASTM-A351-CF8M	ASTM-A2 16-WCB
2	Ball	1	ASTM-A351-CF8M	ASTM-A351-CF8M
3	Thrust washer	1	PTFE	PTFE
4	Stem packing	2	PTFE	PTFE
5	Stem	1	PTFE	AISI 316
6	Gland nut	1	AISI 316	AISI 304
7	Stem washer	1	AISI 304	AISI 304
8	Stem nut	1	AISI 304	AISI 304
9	Cap	2	ASTM-A351-CF8M	ASTM-A2 16-WCB
10	Handle	1	AISI 304	AISI 304
11	Bolt	4-6	AISI 304	AISI 304
12	Hex nut	4-6	AISI 304	AISI 304
13	Spring washer	4-6	AISI 304	AISI 304
14	Ball seat	2	PTFE	PTFE
15	Joint gasket	2	PTFE	PTFE
16	Plastic cover	1	PLASTIC	PLASTIC
17	Lock device	1	AISI 304	AISI 304



- ◆ Max. working pressure 63-40 Bar (1000-600 psi)
- ◆ Working temperature -20°C / 180°C



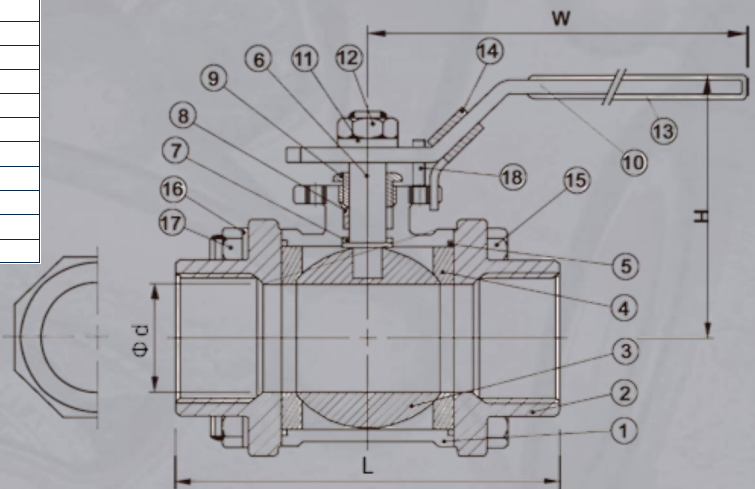
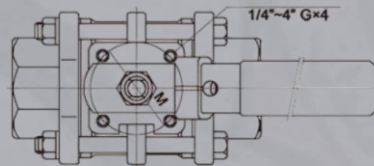
## KOGELKRANEN

Kogelkraan 3-delig, laseinden met ISO top, volle doorlaat  
*Ball valve 3-piece, welded ends with mounting pad, full bore*



Maat	d	L	H	W	M	G	Artikel nr.
1/4"	12.8	59	51	95	36	M5	BV3FBI6013BW
3/8"	12.8	59	51	95	36	M5	BV3FBI6017BW
1/2"	15	64	55	95	36	M5	BV3FBI6021BW
3/4"	20	75	63	110	36	M5	BV3FBI6026BW
1"	25	85	74	135	42	M5	BV3FBI6033BW
1.1/4"	32	97	80	135	50	M6	BV3FBI6042BW
1.1/2"	38	110	92	175	50	M6	BV3FBI6048BW
2"	50	132	107	180	70	M8	BV3FBI6060BW
2.1/2"	65	167	128	250	70	M8	BV3FBI6073BW
3"	80	187	138	250	70	M8	BV3FBI6088BW
4"	100	230	180	300	102	M10	BV3FBI6114BW

Nr.	Parts	Qty.	Material T2IM	Material T2IM-C
1	Body	1	ASTM-A351-CF8M	ASTM-A2 16-WCB
2	Cap	2	ASTM-A351-CF8M	ASTM-A2 16-WCB
3	Ball	1	ASTM-A351-CF8M	ASTM-A351-CF8M
4	Ballseat	2	PTFE	PTFE
5	Stem	2	PTFE	PTFE
6	Joint gasket	1	AISI 316	AISI 316
7	Thrust washer	1	PTFE	PTFE
8	Stem packing	2	PTFE	PTFE
9	Gland nut	1	AISI 304	AISI 304
10	Handle	1	AISI 304	AISI 304
11	Stem washer	1	AISI 304	AISI 304
12	Stem nut	1	AISI 304	AISI 304
13	Plastic cover	1	PLASTIC	PLASTIC
14	Lock device	1	AISI 304	AISI 304
15	Bolt	4-6	AISI 304	AISI 304
16	Spring washer	4-6	AISI 304	AISI 304
17	Hex nut	4-6	AISI 304	AISI 304
18	Stop pin	1	AISI 304	AISI 304



- ◆ Direct mounting pad ISO 5211
- ◆ Max. working pressure 63-40 Bar (1000-600 psi)
- ◆ Working temperature -20°C / 180°C





# AFSLUITERS

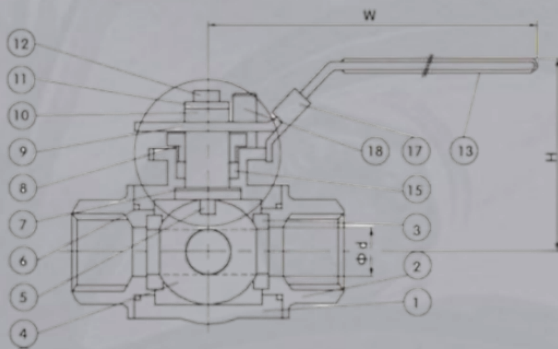
## KOGELKRANEN



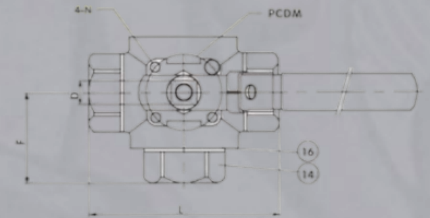
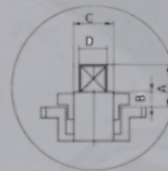
Kogelkraan 3-weg, L-boring bi/bi/bi, reducerende doorlaat

Port ball valve 3 way, L-bore F/F/F, reducing bore

Maat	d	L	B	D	C	A	F	W	H	M	N	Cv factor	Torque Kgf-cm	Artikelnr.
1/4"	12.7	64	6	9	12.7	10.2	32	132	60	42	M5*0.8	68	7.8	BVL3RB6013G
3/8"	12.7	64	6	9	12.7	10.2	32	132	60	42	M5*0.8	68	7.8	BVL3RB6017G
1/2"	12.7	75	6	9	12.7	10.2	37.5	132	60	42	M5*0.8	68	9.5	BVL3RB6021G
3/4"	16	84	6	10.7	15	16	42	155	73	50	M6*1	105	14	BVL3RB6026G
1"	20	101	7.5	10.7	15	18	50.5	155	80	50	M6*1	196	26	BVL3RB6033G
1.1/4"	25	119	7.5	10.7	15	18	54.5	155	85	50	M6*1	266	43	BVL3RB6042G
1.1/2"	32	130	8.5	14	20	19	65	210	103	70	M8*1.25	363	70	BVL3RB6048G
2"	38	151	8.5	14	20	19	75.5	210	110	70	M8*1.25	500	102	BVL3RB6060G



PORT	1	2	3	4
TYPE	L	L	L	L
T	1	1	1	1



Nr.	Parts	Qty.	Material
1	Body	1	ASTM-A351-CF8M
2	End cap	2	ASTM-A351-CF8M
3	Ballseat	4	PTFE
4	Ball	1	ASTM-A351-CF8M
5	Stem	1	AISI 316
6	End seals	2	PTFE
7	Thrust washer	1	PTFE
8	Gland nut	1	AISI 304
9	Handle	1	AISI 304
10	Handle washer	1	AISI 304
11	Wash	1	AISI 304
12	Handle nut	1	AISI 304
13	Plastic cover	1	PLASTIC
14	End cap	1	ASTM-A351-CF8M
15	Stem packing	2	PTFE
16	End seals	1	PTFE
17	Lock	1	AISI 304
18	Stop pin	1	AISI 304

- ◆ F-F BSP Threads ISO 228 (DIN 259)
- ◆ L-Type bore ball
- ◆ Direct mounting pad ISO 5211
- ◆ Max. working pressure 63 Bar (1000 psi)
- ◆ Working temperature -20°C / 180°C

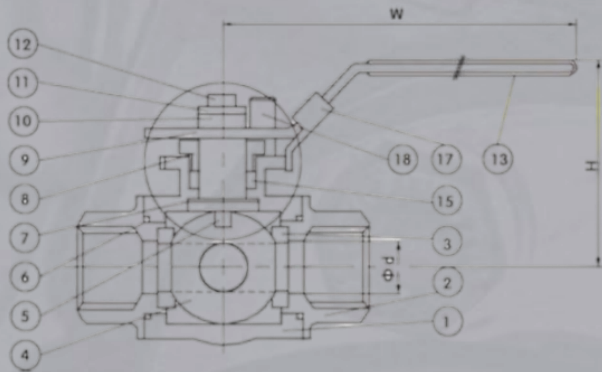


KOGELKRANEN

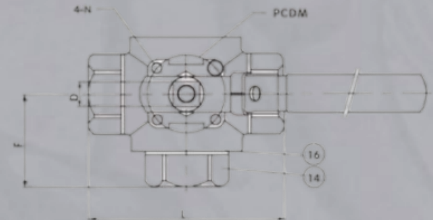
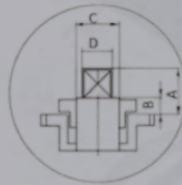


Kogelkraan 3-weg, T-boring bi/bi/bi, reducerende doorlaat  
 Port ball valve 3 way, T-bore F/F/F, reducing bore

Maat	d	L	B	D	C	A	F	W	H	M	N	Cv factor	Torque Kgf-cm	Artikelnr.
1/4"	12.7	64	6	9	12.7	10.2	32	132	60	42	M5*0.8	68	7.8	BVT3RB6013G
3/8"	12.7	64	6	9	12.7	10.2	32	132	60	42	M5*0.8	68	7.8	BVT3RB6017G
1/2"	12.7	75	6	9	12.7	10.2	37.5	132	60	42	M5*0.8	68	9.5	BVT3RB6021G
3/4"	16	84	6	10.7	15	16	42	155	73	50	M6*1	105	14	BVT3RB6026G
1"	20	101	7.5	10.7	15	18	50.5	155	80	50	M6*1	196	26	BVT3RB6033G
1.1/4"	25	119	7.5	10.7	15	18	54.5	155	85	50	M6*1	266	43	BVT3RB6042G
1.1/2"	32	130	8.5	14	20	19	65	210	103	70	M8*1.25	363	70	BVT3RB6048G
2"	38	151	8.5	14	20	19	75.5	210	110	70	M8*1.25	500	102	BVT3RB6060G



PORT	1	2	3	4
TYPE	1	2	3	4
L	1	2	3	4
T	1	2	3	4



Nr.	Parts	Qty.	Material
1	Body	1	ASTM-A351-CF8M
2	End cap	2	ASTM-A351-CF8M
3	Ballseat	4	PTFE
4	Ball	1	ASTM-A351-CF8M
5	Stem	1	AISI 316
6	End seals	2	PTFE
7	Thrust washer	1	PTFE
8	Gland nut	1	AISI 304
9	Handle	1	AISI 304
10	Handle washer	1	AISI 304
11	Wash	1	AISI 304
12	Handle nut	1	AISI 304
13	Plastic cover	1	PLASTIC
14	End cap	1	ASTM-A351-CF8M
15	Stem packing	2	PTFE
16	End seals	1	PTFE
17	Lock	1	AISI 304
18	Stop pin	1	AISI 304

- ◆ F-F BSP Threads ISO 228 (DIN 259)
- ◆ T-Type bore ball
- ◆ Direct mounting pad ISO 5211
- ◆ Max. working pressure 63 Bar (1000 psi)
- ◆ Working temperature -20°C / 180°C



# AFSLUITERS

## KOGELKRANEN



Kogelkraan 2-delig RVS, geflensd (DIN/EN), volle doorlaat

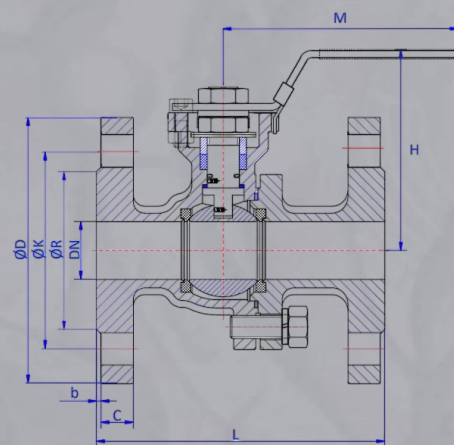
Ball valve 2 piece S.S., flange ends (DIN/EN), full bore

DN	PN	L	H	ØD	ØK	ØR	M	b	c	Bolts	Artikelnr.
15	40	115	75	95	65	45	125	2	14	4xM12	BV2FE6DN015PN40
20	40	120	80	105	75	58	125	2	16	4xM12	BV2FE6DN020PN40
25	40	125	90	115	85	68	155	2	16	4xM12	BV2FE6DN025PN40
32	40	130	100	140	100	78	155	2	16	4xM16	BV2FE6DN032PN40
40	40	140	120	150	110	88	185	3	16	4xM16	BV2FE6DN040PN40
50	16	150	130	165	125	102	185	3	18	4xM16	BV2FE6DN050PN16
65	16	170	150	185	145	122	260	3	18	4xM16	BV2FE6DN065PN16
80	16	180	160	200	160	138	260	3	20	8xM16	BV2FE6DN080PN16
100	16	190	185	220	180	158	300	3	20	8xM16	BV2FE6DN100PN16
125	16	325	242	250	210	188	500	3	22	8xM16	BV2FE6DN125PN16
150	16	350	270	285	240	212	600	3	22	8xM20	BV2FE6DN150PN16
200	16	400	300	340	195	268	800	3	24	12xM20	BV2FE6DN200PN16

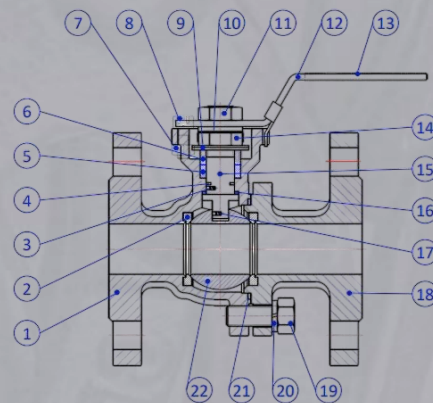
Kogelkraan 2-delig RVS, geflensd (ANSI), volle doorlaat

Ball valve 2 piece S.S., flange ends (ANSI), full bore

DN	LBS	L	H	ØD	ØK	ØR	M	b	c	Bolts	Artikelnr.
1/2"	150	108	75	90	60.3	34.9	125	2	9	4-5/8"	BV2FE6150-0.1/2
3/4"	150	117	80	100	69.9	42.9	125	2	9.3	4-5/8"	BV2FE6150-0.3/4
1"	150	127	90	110	79.4	50.8	155	2	9.8	4-5/8"	BV2FE6150-1
1.1/4"	150	140	100	115	88.9	63.5	155	2	11.5	4-5/8"	BV2FE6150-1.1/4
1.1/2"	150	165	120	125	98.4	73	190	2	13	4-5/8"	BV2FE6150-1.1/2
2"	150	178	130	150	120.7	92.1	190	2	14.5	4-3/4"	BV2FE6150-2
2.1/2"	150	190	150	178	139.7	104.8	260	2	16	4-3/4"	BV2FE6150-2.1/2
3"	150	203	160	190	152.4	127	260	2	17.8	4-3/4"	BV2FE6150-3
4"	150	229	185	228	190.5	157.20	300	2	22.3	4-3/4"	BV2FE6150-4
6"	150	394	268	280	241.3	213	555	2	24	8-7/8"	BV2FE6150-6
8"	150	457	295	345	298.5	268	750	2	28	8-7/8"	BV2FE6150-8



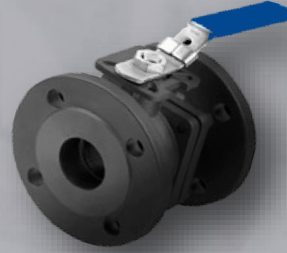
Nr.	Parts	Material
1	Body	ASTM-A351-CF8M (AISI 316)
2	Ball seat	RPTFE (PTFE + 15% Graphite)
3	Antistatic device	ASTM-A276 (AISI 304)
4	O-Ring	FKM
5	Stem seal	RPTFE (PTFE + 15% Graphite)
6	Packing gland	ASTM-A276 (AISI 304)
7	Nut	ASTM-A276 (AISI 304)
8	Screw	ASTM-A276 (AISI 304)
9	Disc spring	ASTM-A276 (AISI 304)
10	Thrust washer	ASTM-A276 (AISI 304)
11	Stem nut	ASTM-A276 (AISI 304)
12	Handle	ASTM-A276 AISI 201
13	Handle sleeve	Plastic
14	Nut	ASTM-A276 (AISI 304)
15	Stem	ASTM-A276 (AISI 316)
16	Stem gasket	RPTFE (PTFE + 15% Graphite)
17	Antistatic device	ASTM-A276 (AISI 304)
18	Bonnet	ASTM-A351-CF8M (AISI 316)
19	Screw	ASTM-A193 (AISI 304)
20	Washer	AISI 304
21	Gasket	RPTFE (PTFE + 15% Graphite)
22	Ball	ASTM-A276 (AISI 316)



- ◆ Flanges according EN1092-2 or ANSI class 150
- ◆ Max. pressure DIN/EN 16 Bar (DN15 - DN40, 40 Bar)
- ◆ Max. pressure ANSI 150 psi
- ◆ Working temperature -20°C / 180°C



## KOGELKRANEN



Kogelkraan 2-delig staal, geflensd (DIN/EN), volle doorlaat

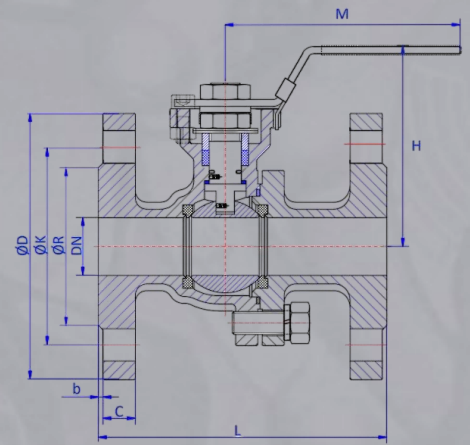
Ball valve 2 piece CS, flange ends (DIN/EN), full bore

DN	PN	L	H	øD	øK	øR	M	b	c	Bolts	Artikelnr.
15	40	115	75	95	65	45	125	2	14	4xM12	BV2FECBDN015PN40
20	40	120	80	105	75	58	125	2	16	4xM12	BV2FECBDN020PN40
25	40	125	90	115	85	68	155	2	16	4xM12	BV2FECBDN025PN40
32	40	130	100	140	100	78	155	2	16	4xM16	BV2FECBDN032PN40
40	40	140	120	150	110	88	185	3	16	4xM16	BV2FECBDN040PN40
50	16	150	130	165	125	102	185	3	18	4xM16	BV2FECBDN050PN16
65	16	170	150	185	145	122	260	3	18	4xM16	BV2FECBDN065PN16
80	16	180	160	200	160	138	260	3	20	8xM16	BV2FECBDN080PN16
100	16	190	185	220	180	158	300	3	20	8xM16	BV2FECBDN100PN16
125	16	325	242	250	210	188	500	3	22	8xM16	BV2FECBDN125PN16
150	16	350	270	285	240	212	600	3	22	8xM20	BV2FECBDN150PN16
200	16	400	376	340	295	268	900	3	24	12xM20	BV2FECBDN200PN16

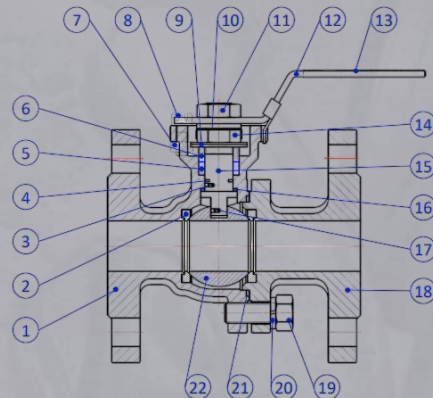
Kogelkraan 2-delig staal, geflensd (ANSI), volle doorlaat

Ball valve 2 piece CS, flange ends (ANSI), full bore

DN	LBS	L	H	øD	øK	øR	M	b	c	Bolts	Artikelnr.
1"	150	127	90	110	79.4	50.8	155	2	9.8	4-5/8"	BV2FECB150-1
1.1/4"	150	140	100	115	88.9	63.5	155	2	11.5	4-5/8"	BV2FECB150-1.1/4
1.1/2"	150	165	120	125	98.4	73	190	2	13	4-5/8"	BV2FECB150-1.1/2
2"	150	178	130	150	120.7	92.1	190	2	14.5	4-3/4"	BV2FECB150-2
2.1/2"	150	190	150	178	139.7	104.8	260	2	16	4-3/4"	BV2FECB150-2.1/2
3"	150	203	160	190	152.4	127	260	2	17.8	4-3/4"	BV2FECB150-3
4"	150	229	185	228	190.5	157.20	300	2	22.3	4-3/4"	BV2FECB150-4



Nr.	Parts	Material
1	Body	ASTM A216 WCB (Carbon Steel)
2	Ball seat	RPTFE (PTFE + 15% Graphite)
3	Antistatic device	ASTM-A276 (AISI 304)
4	O-Ring	FKM
5	Stem seal	RPTFE (PTFE + 15% Graphite)
6	Packing gland	ASTM-A276 (AISI 304)
7	Nut	ASTM-A276 (AISI 304)
8	Screw	ASTM-A276 (AISI 304)
9	Disc spring	ASTM-A276 (AISI 304)
10	Thrust washer	ASTM-A276 (AISI 304)
11	Stem nut	ASTM-A276 (AISI 304)
12	Handle	ASTM-A276 (AISI 304)
13	Handle sleeve	Plastic
14	Nut	ASTM-A276 (AISI 304)
15	Stem	ASTM-A276 (AISI 316)
16	Stem gasket	RPTFE (PTFE + 15% Graphite)
17	Antistatic device	ASTM-A276 (AISI 304)
18	Bonnet	ASTM-A216 WCB (Carbon Steel)
19	Screw	ASTM-A193 (AISI 304)
20	Washer	AISI 304
21	Gasket	RPTFE (PTFE + 15% Graphite)
22	Ball	ASTM-A276 (AISI 304)



- ◆ Flanges according EN1092-2 or ANSI class 150
- ◆ Max. pressure DIN/EN 16 Bar (DN15 - DN40, 40 Bar)
- ◆ Max. pressure ANSI 150 psi
- ◆ Working temperature -30°C / 180°C

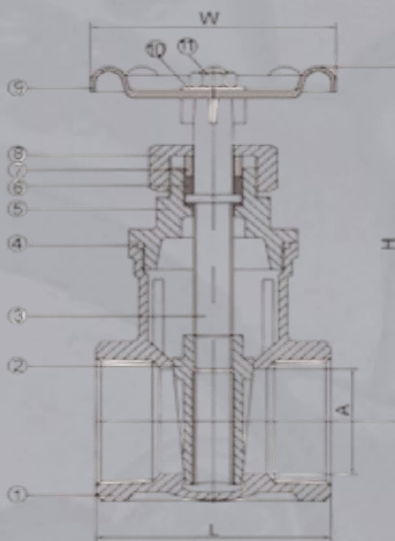


Schuifafsluiter, draad BSP (RVS)  
Gate valve, BSP threads (S.S.)



Maat	A	H	L	W	Artikelnr.
1/2"	15	92	55	70	GAVLV6021G
3/4"	20	97	60	70	GAVLV6026G
1"	25	108.5	65	80	GAVLV6033G
1.1/4"	32	123.5	76.5	80	GAVLV6042G
1.1/2"	40	146	85	90	GAVLV6048G
2"	50	162	95	100	GAVLV6060G
2.1/2"	65	260	116	100	GAVLV6073G
3"	80	295	131	120	GAVLV6088G

Nr.	Parts	Material
1	Body	ASTM-A351-CF8M (316L)
2	Disc	ASTM-A351-CF8M
3	Stem	SS316
4	Joint gasket	PTFE
5	Snapwasher	ASTM-A351-CF8M
6	Stem packing	PTFE
7	High washer	SS304
8	Packing nut	ASTM-A351-CF8M
9	Hand weel	CAST ALUMINIUM
10	Plate	ALUMINIUM
11	Wheel nut	SS304

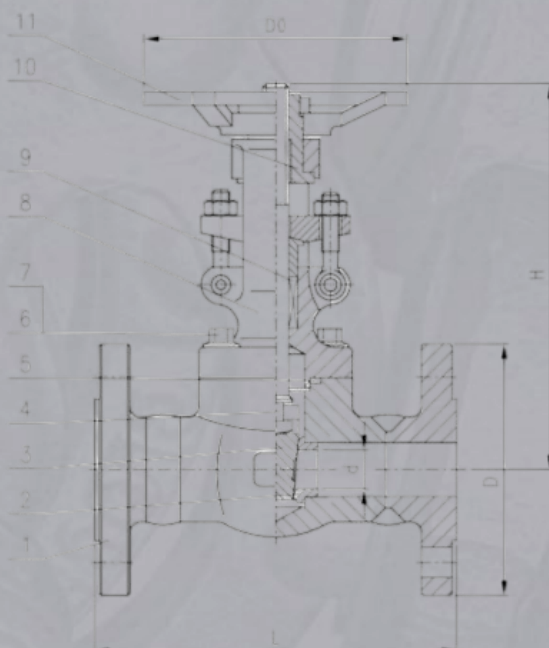


Schuifafsluiter, geflensd, ANSI 150 A105/N  
Gate valve, flanged ends, ANSI 150 A105/N



Maat	d	L	H	D0	D	Artikelnr.
1/2"	10.5	108	157	80	90	GAVLV150B21021
3/4"	13	117	163	80	100	GAVLV150B21026
1"	17	127	194	105	110	GAVLV150B21033
1.1/4"	22	140	196	140	115	GAVLV150B21042
1.1/2"	29	165	217	140	125	GAVLV150B21048
2"	36	178	251	160	150	GAVLV150B21060

Nr.	Parts	Material
1	Body	ASTM A105/N
2	Seat	ASTM A276 - 410 + STL
3	Wedge	ASTM A182 F6a
4	Stem	ASTM A276 - 410
5	Body gasket	AISI 304 + graphite
6	Bolt	ASTM A193 Gr. B7
7	Nut	ASTM A194 Gr. 2H
8	Bonnet	ASTM A105/N
9	Stem packing	Graphite
10	Stem nut	ASTM A276 - 410
11	Hand wheel	Cast Iron



- ◆ Flanged ends according to ANSI B 16.5
- ◆ Max. working pressure 19 Bar.
- ◆ Working temperature -29°C / 420°C

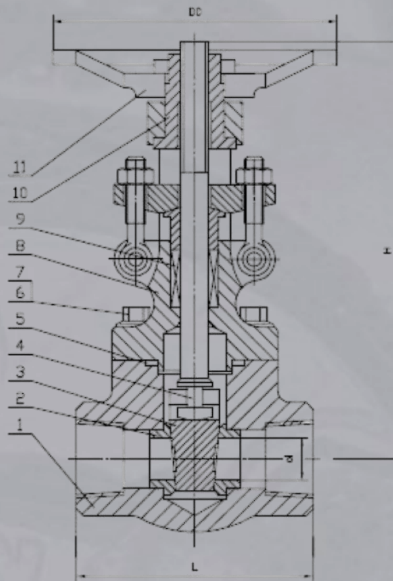


Schuifafsluiter staal, 800 pondsklasse, socket weld einden  
 Gate valve C.S., class 800, SW ends



Maat	d	S.W	L	H	D0	Artikel nr.
1/2"	10	21.8	79	161	100	GAVLV800SW21021
3/4"	13.5	27.1	92	163	100	GAVLV800SW21026
1"	18	33.8	111	196	125	GAVLV800SW21033
1.1/4"	24	42.6	120	223	160	GAVLV800SW21042
1.1/2"	30	48.7	120	251	160	GAVLV800SW21048
2"	36.5	61.1	140	290	180	GAVLV800SW21060

Nr.	Parts	Material
1	Body	ASTM-A105/N
2	Seat	ASTM-A276-410 + STL.
3	Wedge	ASTM-A182 F6a
4	Stem	ASTM-A276-410
5	Body Gasket	304L + graphite
6	Bonnet bolt	ASTM-A193 Gr. B7
7	Bonnet nut	ASTM-A194 Gr. 2H
7	Bonnet	ASTM-A105/N
8	Stem packing	Graphite
9	Stem nut	ASTM-A276-410
10	Handweel	Cast Iron



- ◆ Socket welds according to ANSI B 16.11
- ◆ Max. working pressure 140 Bar.
- ◆ Working temperature  $-29^{\circ}\text{C} / 420^{\circ}\text{C}$

\*\* Let op, ook te bestellen met NPT binnendraad. Artikel = GAVLV800NPT21, gevolgd door maatvoering



# AFSLUITERS

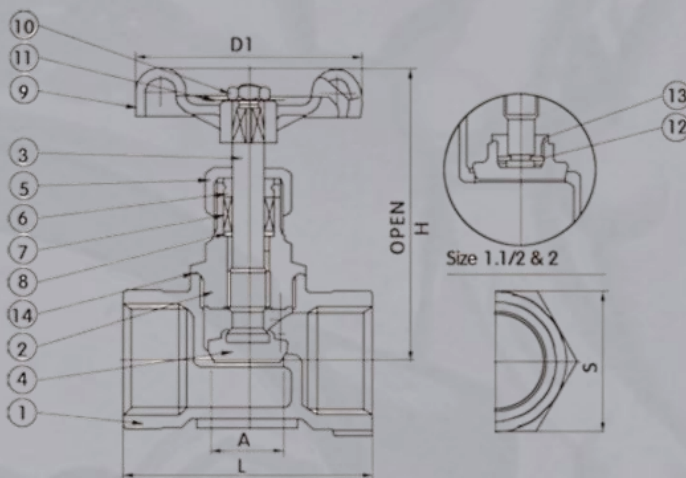
## KLEPAFSLUITERS

Klepafsluiter, draad BSP, bi/bi (RVS)  
Globe valve, BSP threads, F/F (S.S.)



Maat	A	H	L	D1	S	Artikelnr.
1/4"	10	80	45	70	21	GLVLV6013G
3/8"	10	80	45	70	21	GLVLV6017G
1/2"	10	80	52	70	25	GLVLV6021G
3/4"	15	86	60	70	31	GLVLV6026G
1"	20	103	71.5	80	40	GLVLV6033G
1.1/4"	25	105	81	80	50	GLVLV6042G
1.1/2"	32	124	91	90	54	GLVLV6048G
2"	40	138	101	100	67	GLVLV6060G

Nr.	Parts	Material
1	Body	CF8M
2	Bonnet	CF8M
3	Stem	SS316
4	Disc	SS316
5	Packing nut	CF8M
6	High washer	SS304
7	Gland packing	PTFE
8	Packing washer	SS304
9	Hand weel	Cast aluminium
10	Wheel nut	SS304
11	Plate	Aluminium
12	Disc washer	SS316
13	Lock nut	SS316
14	Joint gasket	PTFE



\*\* Let op, ook te bestellen in een Y-model. Artikel = GLVLVY6, gevolgd door maatvoering.



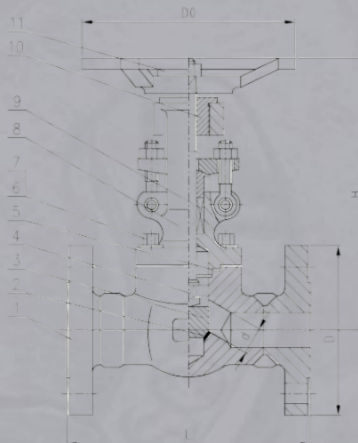
Klepafsluiter, geflensd, ANSI 150 A105/N  
Globe valve, flanged ends, ANSI 150 A105/N



Maat	d	L	H	D0	D	Artikelnr.
1/2"	10.5	108	185	80	90	GLVLV150B21021
3/4"	13	117	183	80	100	GLVLV150B21026
1"	16.5	127	218	105	110	GLVLV150B21033
1.1/4"	21.5	140	223	140	115	GLVLV150B21042
1.1/2"	27	165	245	140	125	GLVLV150B21048
2"	33	203	269	160	150	GLVLV150B21060

Nr.	Parts	Material
1	Body	ASTM A105/N
2	Seat	Deposited STL
3	Wedge	ASTM A182 F6a
4	Stem	ASTM A276 - 410
5	Body gasket	AISI 304 + graphite
6	Bolt	ASTM A193 Gr. B7
7	Nut	ASTM A194 Gr. 2H
8	Stem packing	Graphite
9	Gland	ASTM A276 - 410
10	Gland Flange	ASTM A105
11	Bonnet	ASTM A105/N
12	Stem Nut	ASTM A276 - 410
13	Handwheel	Cast Iron

- ◆ Flanged ends according to ANSI B 16.5
- ◆ Max. working pressure 19 Bar.
- ◆ Working temperature -29°C / 420°C



\*\* Let op, ook te bestellen in een 800 pond SW of NPT uitvoering.

\*\* Artikel SW = GLVLV800SW21(maat) / Artikel NPT = GLVLV800NPT21(maat)

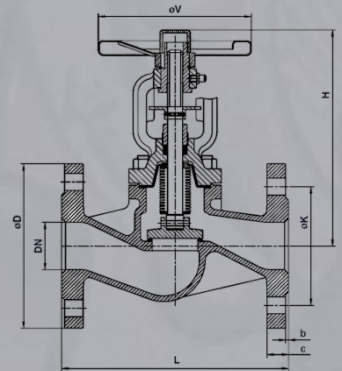
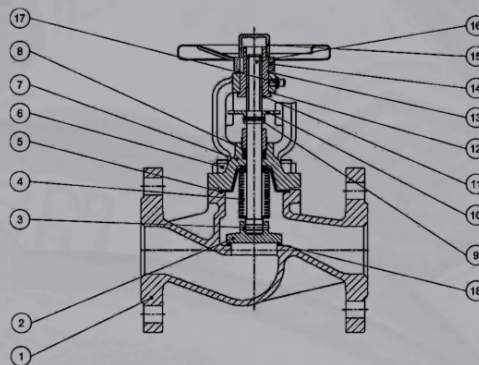


Klepafsluiter, geflensd (DIN/EN), staal PN40  
 Globe valve, flanged ends (DIN/EN), C.S. PN40



DN	L	H	K	D	b	c	V	Artikel nr.
15	130	180	65	95	2	16	140	GLVLVFCSDN15PN40
20	150	190	75	105	2	18	140	GLVLVFCSDN20PN40
25	160	220	85	115	2	18	160	GLVLVFCSDN25PN40
32	180	220	100	140	2	18	160	GLVLVFCSDN32PN40
40	200	255	110	150	2	18	180	GLVLVFCSDN40PN40
50	230	260	125	165	2	20	180	GLVLVFCSDN50PN40
65	290	295	145	185	2	22	200	GLVLVFCSDN65PN40
80	310	330	160	200	2	24	250	GLVLVFCSDN80PN40
100	350	350	190	235	2	26	300	GLVLVFCSDN100PN40
125	400	420	220	270	2	26	350	GLVLVFCSDN125PN40
150	480	455	250	300	2	28	400	GLVLVFCSDN150PN40
200	600	550	320	375	3	34	500	GLVLVFCSDN200PN40

Nr.	Parts	Material
1	Body	GS-C25-1.0619
2	Disc	C.S. 13Cr
3	Pin	AISI 304
4	Bellows	AISI 304
5	Gasket	AISI 304 + graphite
6	Bolt	ASTM A193 B7
6	Nut	ASTM A194 2H
7	Cover	GS-C25-1.0619
8	Packing gland	AISI 105 + graphite
9	Pin	AISI 105
10	Guide piece	AISI 105
11	Pin	CI-25
12	Washer	AISI 304
13	Circlip	65Mn
14	Lock nut	AISI 105
15	Hand wheel	AISI 105
16	Stem	X2013Cr
17	Nozzle	AISI 304
18	Seat	13Cr



- ◆ Flanges according EN1092-2 PN40
- ◆ Max. working pressure 40 Bar (PN40)
- ◆ Working temperature -10°C / 400°C

\*\* Let op, ook te bestellen in de drukklasse PN16. Dit geldt alleen voor de maten van 2" en hoger. Hieronder een overzicht.

Maat	DN	L	H	K	D	b	c	V	Artikelnr.
2"	50	230	260	125	165	2	20	180	GLVLVFCSDN50PN16
2.1/2"	65	290	295	145	185	2	18	200	GLVLVFCSDN65PN16
3"	80	310	330	160	200	2	20	250	GLVLVFCSDN80PN16
4"	100	350	350	180	220	2	20	300	GLVLVFCSDN100PN16
5"	125	400	420	210	250	2	22	350	GLVLVFCSDN125PN16
6"	150	480	455	240	285	2	22	400	GLVLVFCSDN150PN16
8"	200	600	550	295	340	3	24	500	GLVLVFCSDN200PN16



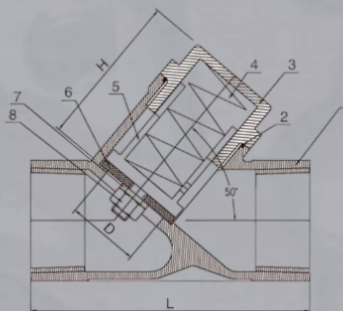


Terugslagklep, met veer  
*Piston check valve with spring*



Maat	D	L	H	Artikelnr.
1/4"	11.6	65.5	31	CHVLV6013G
3/8"	12.5	65.5	31	CHVLV6017G
1/2"	12.5	65.5	31	CHVLV6021G
3/4"	18	75.5	40	CHVLV6026G
1"	23.5	90.5	50	CHVLV6033G
1.1/4"	31.4	111	55	CHVLV6042G
1.1/2"	35.7	121	70.5	CHVLV6048G
2"	45.5	151	87	CHVLV6060G

Nr.	Parts	Material
1	Body	ASTM-A351-CF8M
2	Joint gasket	PTFE
3	Cap	ASTM-A351-CF8M
4	Spring	AISI 316
5	Disc	AISI 316
6	Seal	PTFE
7	Springwasher	AISI 316
8	Nut	AISI 316

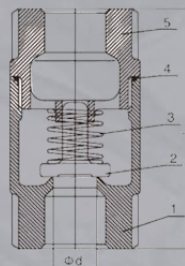


Terugslagklep, rechte uitvoering (2 delen), met veer  
*2 piece vertical check valve, with spring*



Maat	D	L	Artikelnr.
3/8"	12.5	65.5	CHVLVS6017G
1/2"	12.5	65.5	CHVLVS6021G
3/4"	18	75.5	CHVLVS6026G
1"	23.5	90.5	CHVLVS6033G
1.1/4"	31.4	111	CHVLVS6042G
1.1/2"	35.7	121	CHVLVS6048G
2"	45.5	151	CHVLVS6060G

Nr.	Parts	Material
1	Body	CF8 / CF8M
2	Disc	CF8 / CF8M
3	Spring	304/316
4	Joint gasket	PTFE
5	Cap	CF8 / CF8M

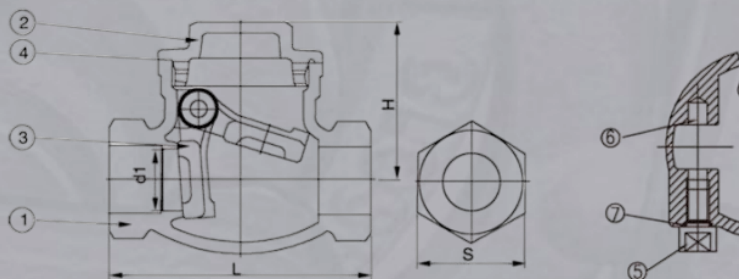


Terugslagklep, swing check  
*Swing check valve*



Maat	d1	H	L	S	Artikelnr.
1/2"	15	41	65	26	CHVLVSC6021G
3/4"	20	49.5	80	31	CHVLVSC6026G
1"	25	55	92	39	CHVLVSC6033G
1.1/4"	32	62.5	105	50	CHVLVSC6042G
1.1/2"	40	70.5	120	58	CHVLVSC6048G
2"	50	79.5	140	68	CHVLVSC6060G

Nr.	Parts	Material
1	Body	CF8M
2	Cap	CF8M
3	Disc	CF8M
4	Joint gasket	PTFE
5	Plug	SS316
6	Hanger pin	SS316
7	Thrust washer	PTFE





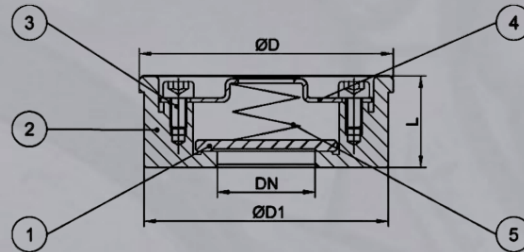
KLEPAFSLUITERS & VUILVANGERS

Terugslagklep, flens tussenbouw, met veer, PN40  
 Disc check valve, with spring, PN40



Maat	d	L	H	W	M	G	Artikel nr.
1/4"	12.8	59	51	95	36	M5	BV3FBI6013BW
3/8"	12.8	59	51	95	36	M5	BV3FBI6017BW
1/2"	15	64	55	95	36	M5	BV3FBI6021BW
3/4"	20	75	63	110	36	M5	BV3FBI6026BW
1"	25	85	74	135	42	M5	BV3FBI6033BW
1.1/4"	32	97	80	135	50	M6	BV3FBI6042BW
1.1/2"	38	110	92	175	50	M6	BV3FBI6048BW
2"	50	132	107	180	70	M8	BV3FBI6060BW
2.1/2"	65	167	128	250	70	M8	BV3FBI6073BW
3"	80	187	138	250	70	M8	BV3FBI6088BW
4"	100	230	180	300	102	M10	BV3FBI6114BW

Nr.	Parts	Material
1	Disc	ASTM-A351-CF8M
2	Body	ASTM-A351-CF8M
3	Bolt	AISI 316
4	Cover	AISI 316
5	Spring	AISI 316

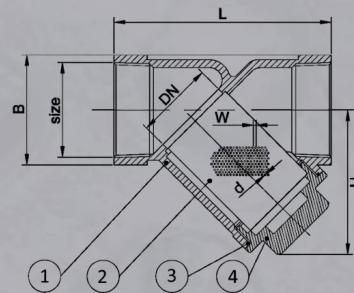


Vuilvanger  
 Y-strainer



Maat	DN	L	H	B	W	d	Artikel nr.
1/4"	11	65	42	21	2	1	YSTRAIN6013G
3/8"	11	65	44	26	2	1	YSTRAIN6017G
1/2"	12	65	44	26	2	1	YSTRAIN6021G
3/4"	17	80	50	33	2	1	YSTRAIN6026G
1"	22	90	65	41	2	1	YSTRAIN6033G
1.1/4"	32	105	70	49	2	1	YSTRAIN6042G
1.1/2"	38	120	80	56	2	1	YSTRAIN6048G
2"	48	140	100	69	2	1	YSTRAIN6060G

Nr.	Parts	Material
1	Body	AISI 316 CF8M
2	Screen	AISI 304
3	Flat gasket	PTFE
4	Cap	AISI 316 CF8M





### Vlinderkleppen

Een vlinderklep is een afsluiter met een eenvoudige constructie. In een gesloten positie blokkeert het klapblad de boring, in open positie wordt het klapblad gedraaid om dus de doorstroming mogelijk te maken. In slechts een kwartslag gaat de vlinderklep van open naar volledig gesloten en omgekeerd. Dus ideaal voor het snel openen en sluiten van een leiding. Vlinderkleppen worden het meest gebruikt in de watervoorziening, brandbestrijding, gasproductie, olie-industrie, chemische industrie en energievoorzieningen.

Doorgaans zijn er twee types vlinderkleppen die het meest gebruikt worden, namelijk de centrische en excentrische uitvoering. Bij de centrische is de spinder gecentreerd in het midden van de klep en de schijf is gecentreerd in de boring. De excentrische vlinderklep heeft één of meerdere assen die dus niet in het midden zijn geplaatst, hierin heb je ook weer verschillende types: enkel, dubbel of drievoudig excentrisch.

Wij houden geen vaste voorraad van vlinderkleppen, echter kunnen wij door middel van onze leveranciers een prima aanbieding hiervoor maken.



### Geautomatiseerde afsluiters

Automatische afsluiters worden bediend door een elektrische motor of een pneumatische bediening zodat ze op afstand bestuurd kunnen worden door een computer. Voor de geautomatiseerde afsluiters geldt eigenlijk hetzelfde als de vlinderkleppen. Wij verkopen ze, maar we houden hier geen voorraad van.

